



## COVID-19 DATA/SURVEILLANCE 2021 UPDATE:

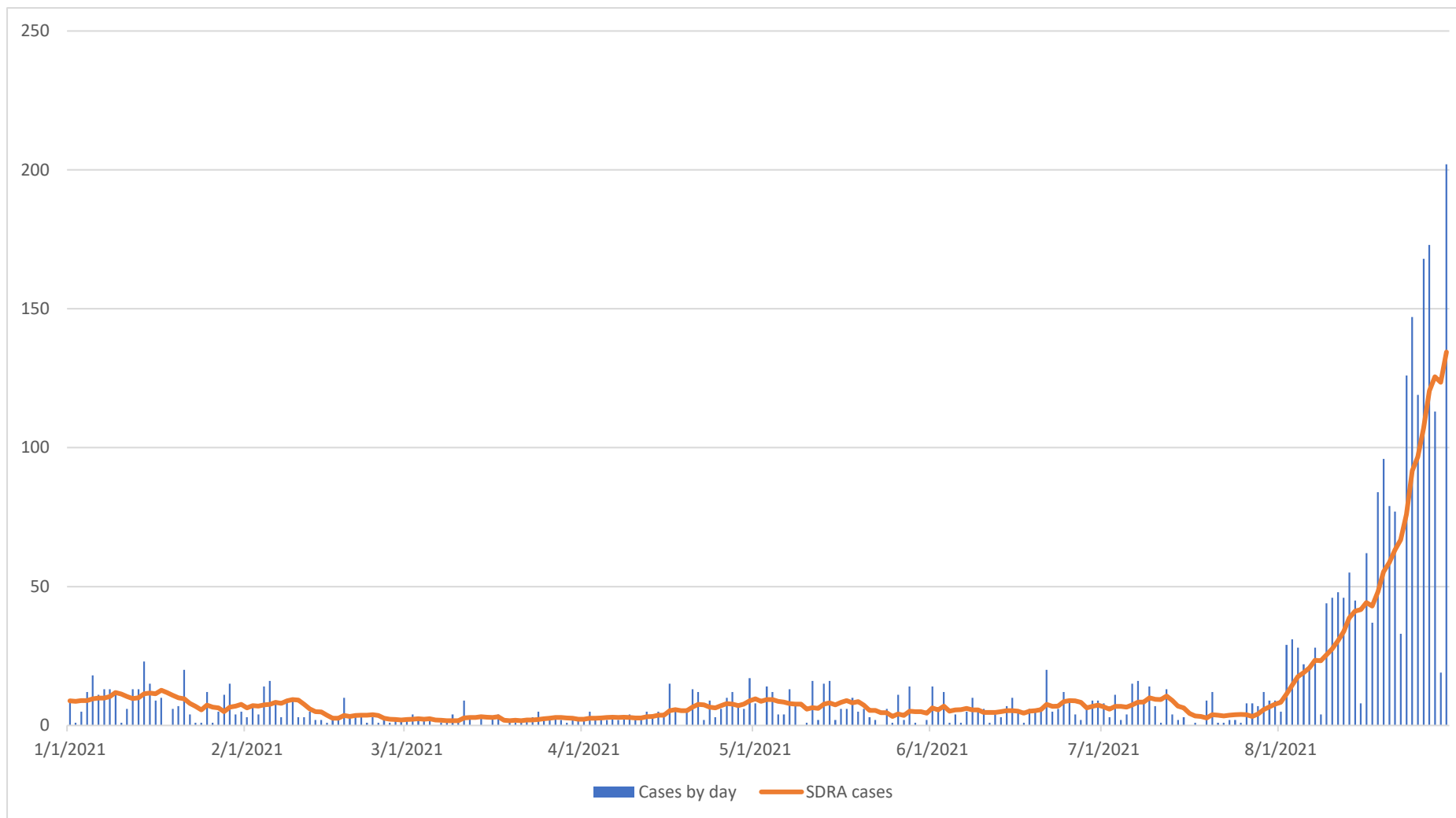
DATA ARE PROVIDED HERE FOR **ALL OF 2021** AND FOR **JULY & AUGUST 2021**

OFFICE OF EPIDEMIOLOGY AND RESEARCH & COVID-19 SURVEILLANCE UNIT  
GUAM DEPARTMENT OF PUBLIC HEALTH AND SOCIAL SERVICES

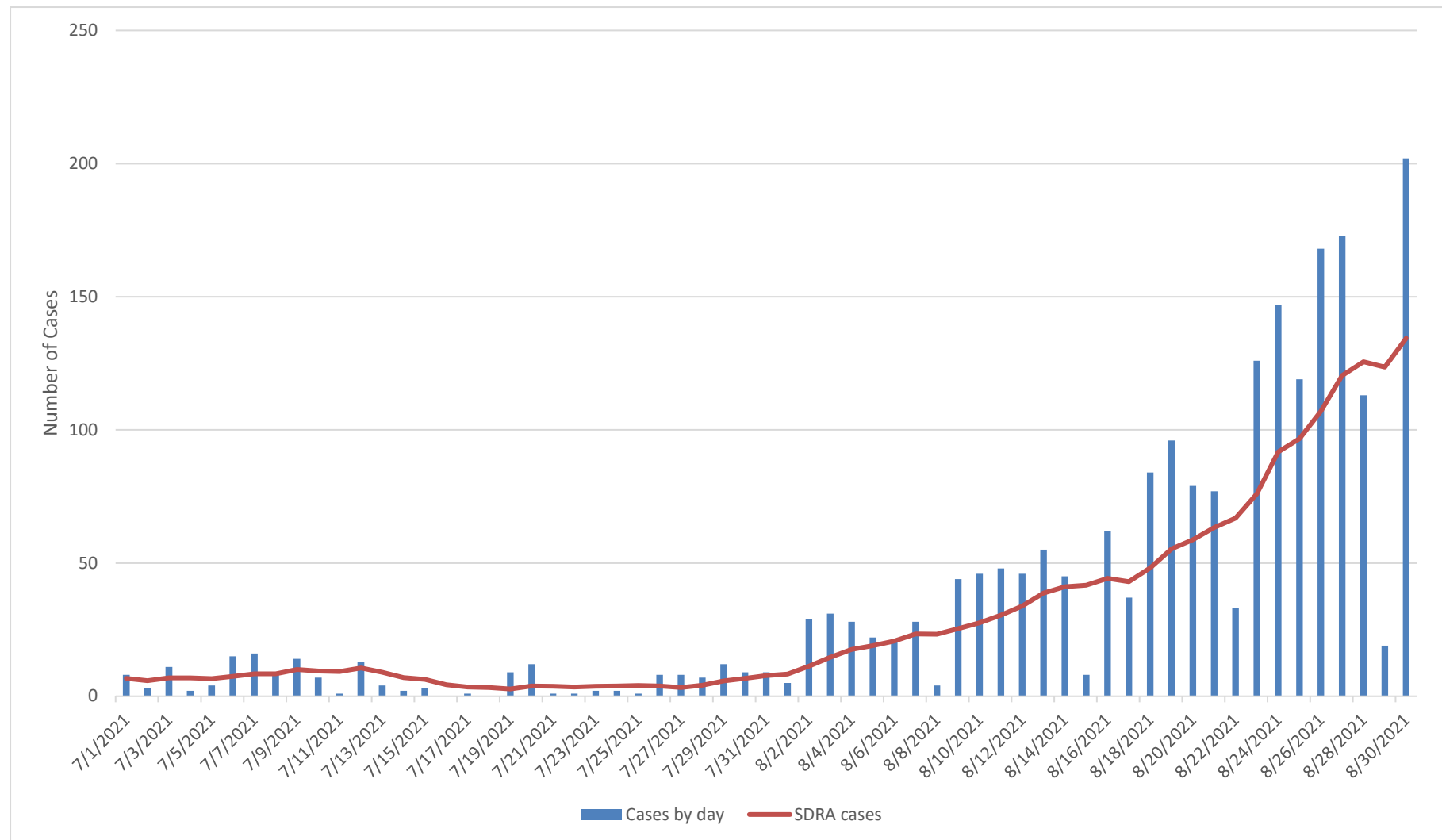
9/2/2021

Data are also available on the DPHSS COVID-19 DASHBOARD for the entire pandemic 2020-2021 to date,  
and trends for the past two weeks: <https://dphss.guam.gov/covid-19/>

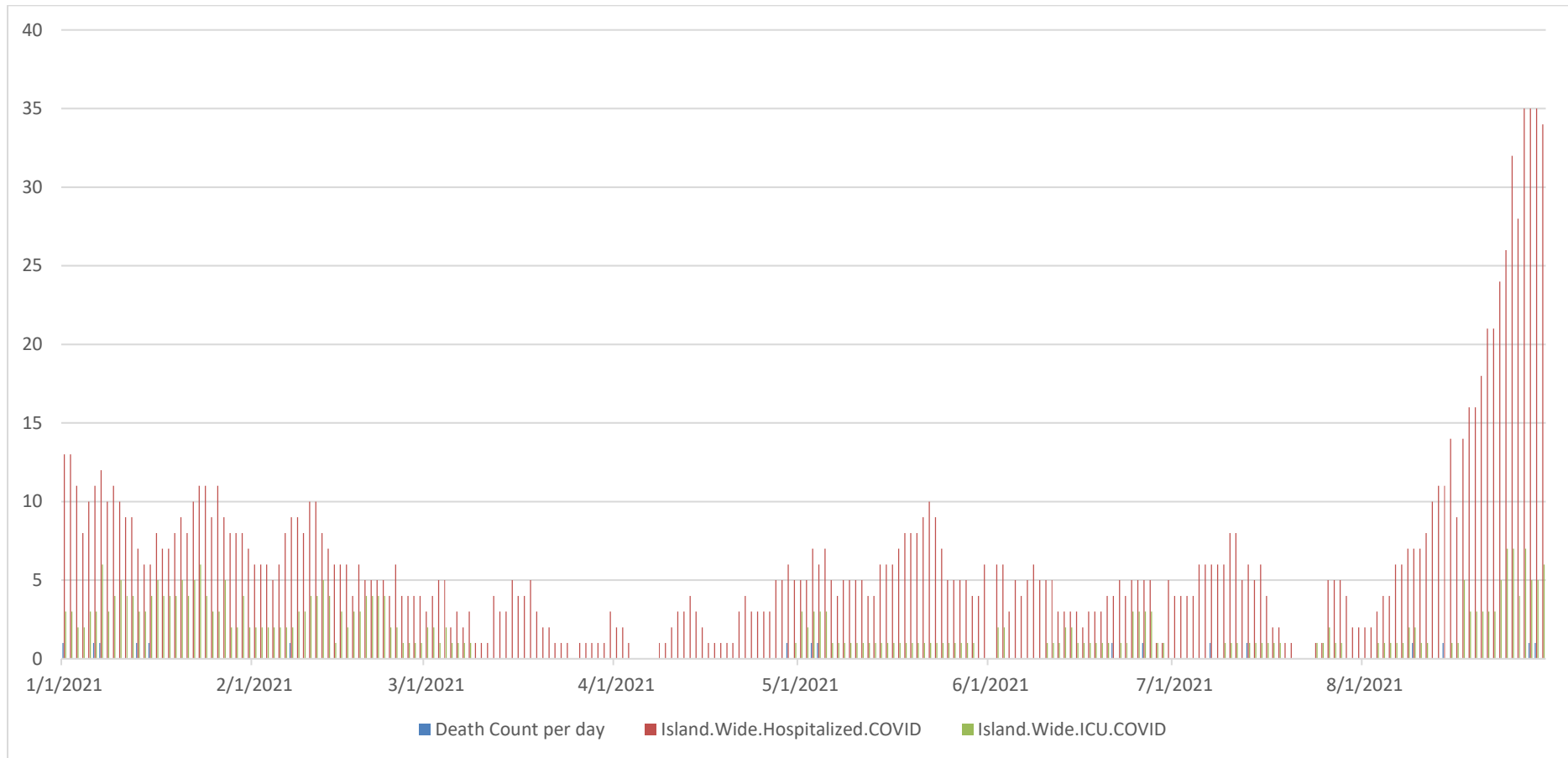
**Figure 1. - AVAILABLE DATA FOR ALL OF 2021 SHOW AN INCREASE IN CASES IN MID-APRIL AND THE SURGE OF COVID-19 CASES BEGINNING IN AUGUST**



**FIGURE 2. AVAILABLE DATA FOR JULY & AUGUST 2021 SHOW THE SURGE IN COVID-19 CASES BEGINNING IN AUGUST**

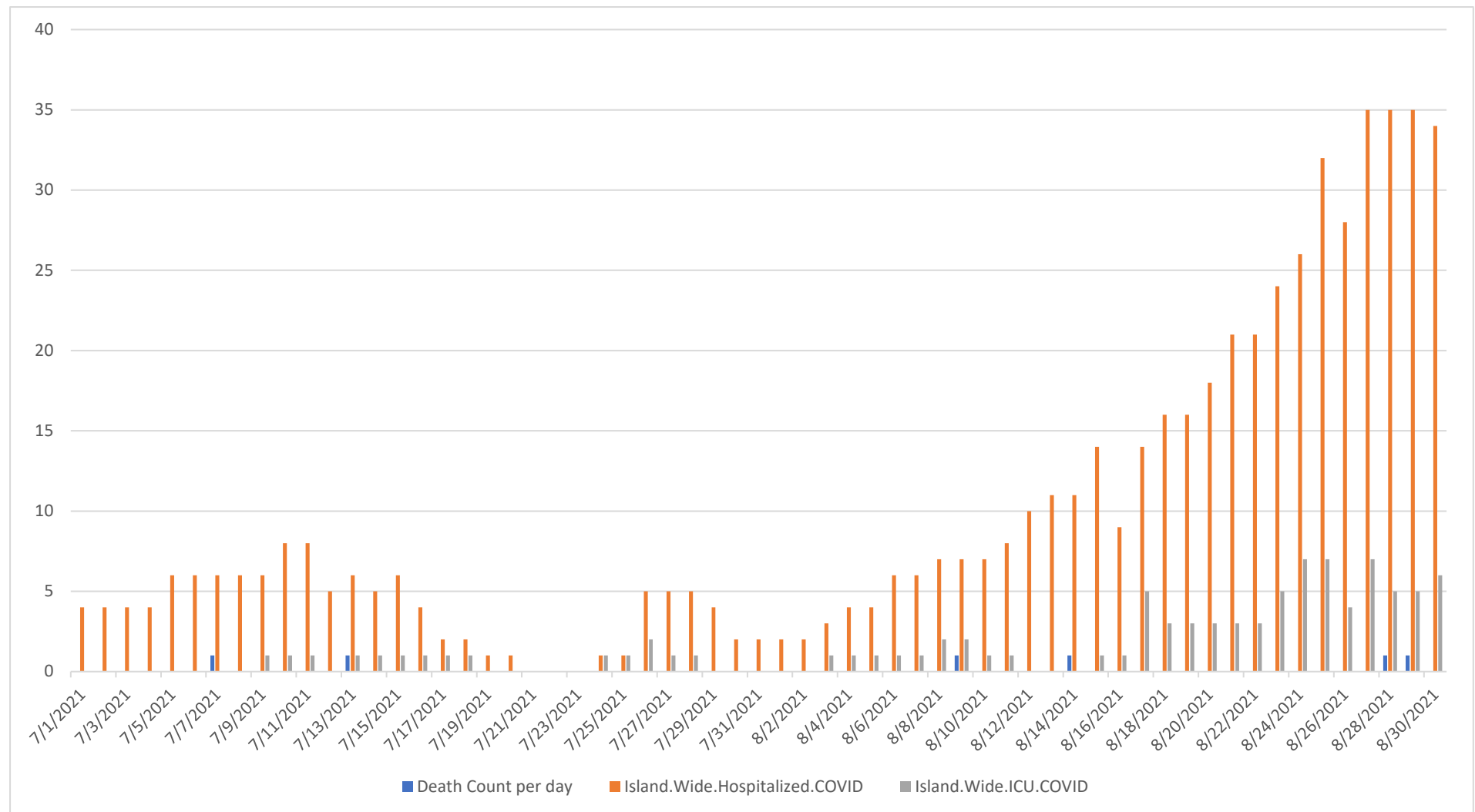


**FIGURE 3. AVAILABLE DATA FOR ALL OF 2021 SHOW HIGH UTILIZATION OF HOSPITALS AND ICU'S IN EARLY 2021, THEN A DECREASE, WITH AN INCREASE AT HOSPITALS AND IN ICU'S BEGINNING IN MAY AND A SURGE IN AUGUST. NOTE THAT HOSPITAL AND ICU NUMBERS TEND TO FOLLOW SURGES IN CASES.**



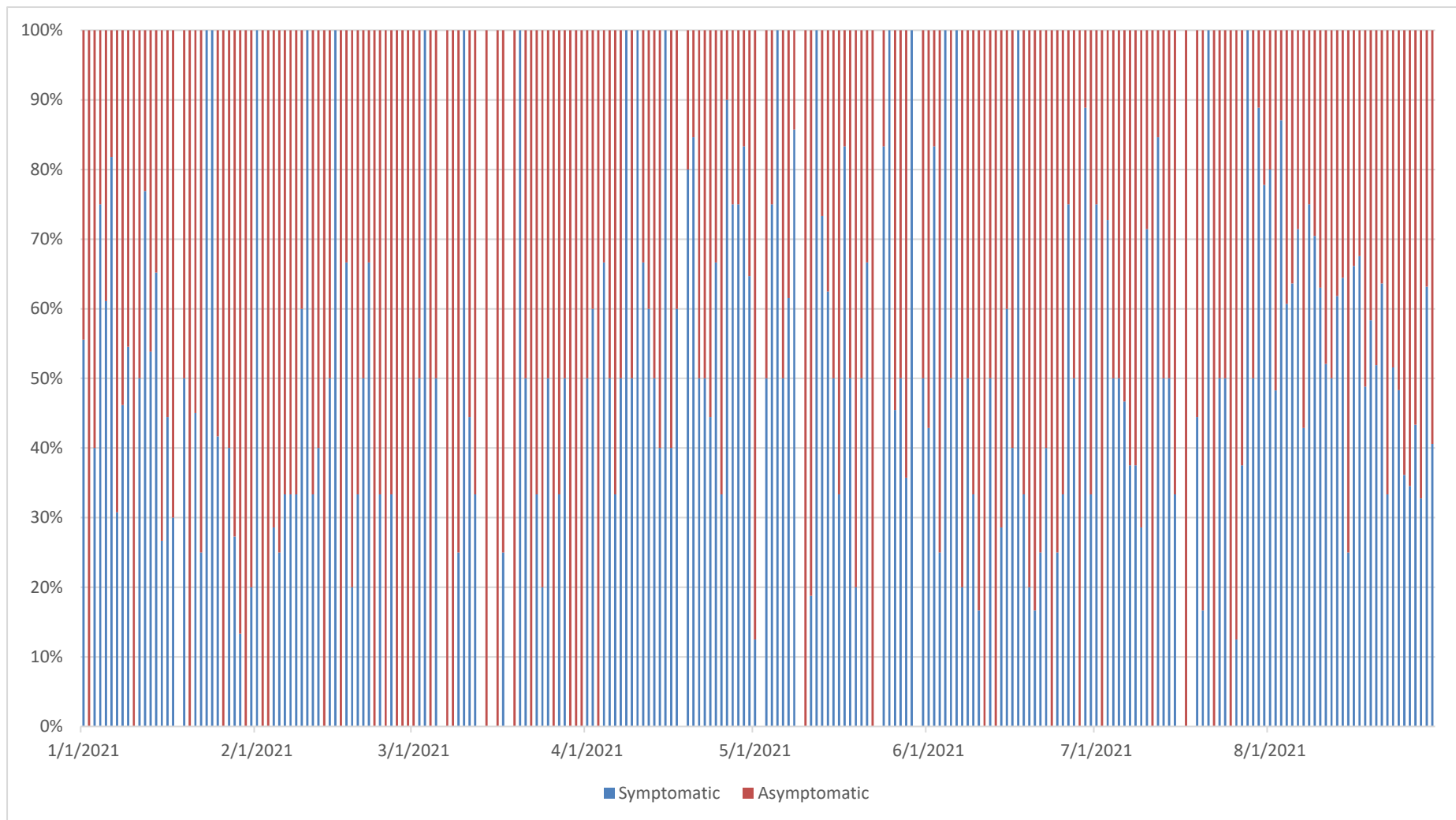
**Deaths in 2021=27 (2 in September not shown on the graph)**

**FIGURE 4. AVAILABLE DATA FOR JULY & AUGUST 2021 SHOW THE RECENT SURGE IN HOSPITAL UTILIZATION AND ICU NUMBERS**

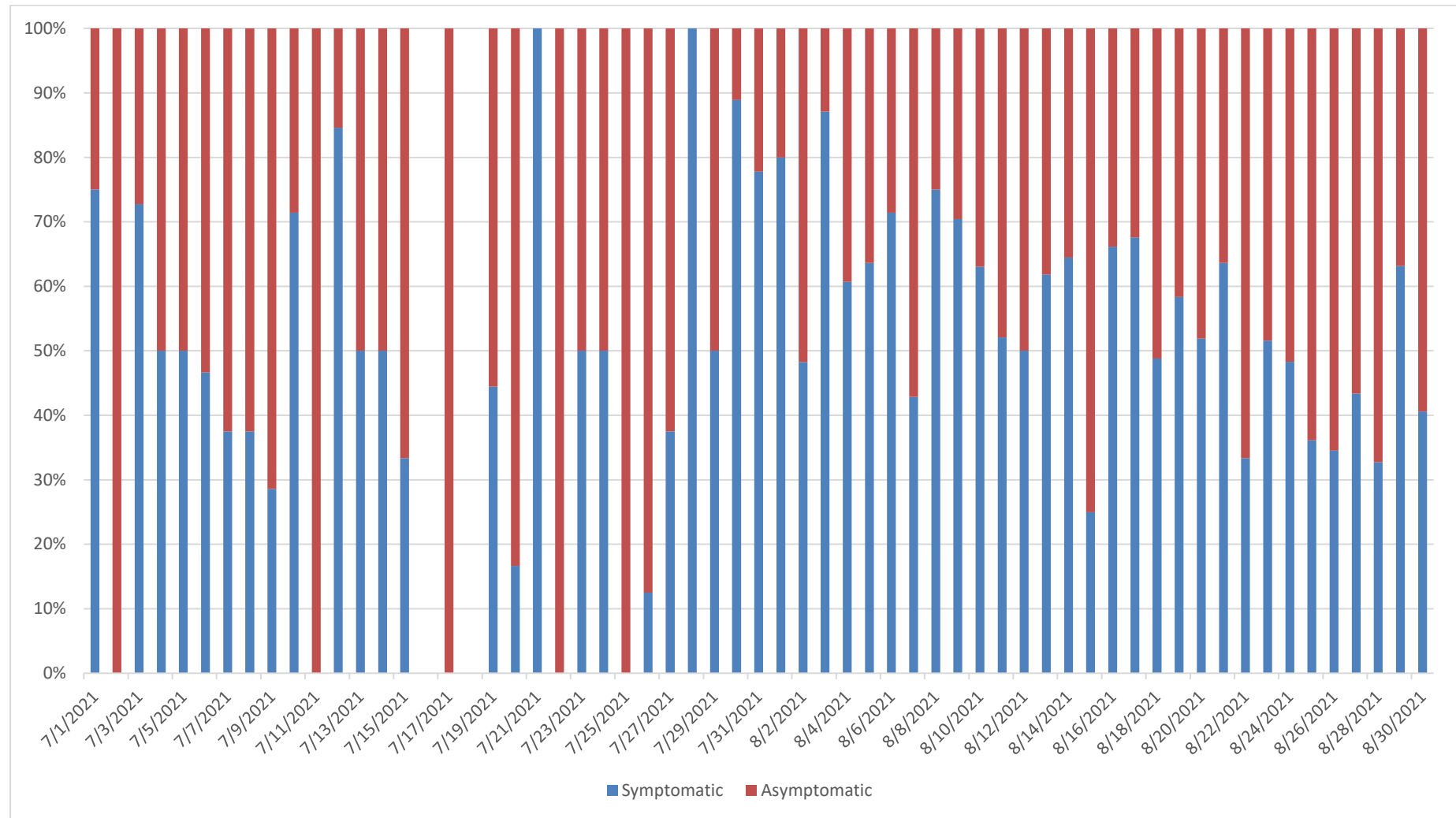


**Deaths in July & August=7, and September =2 (not shown on graph)**

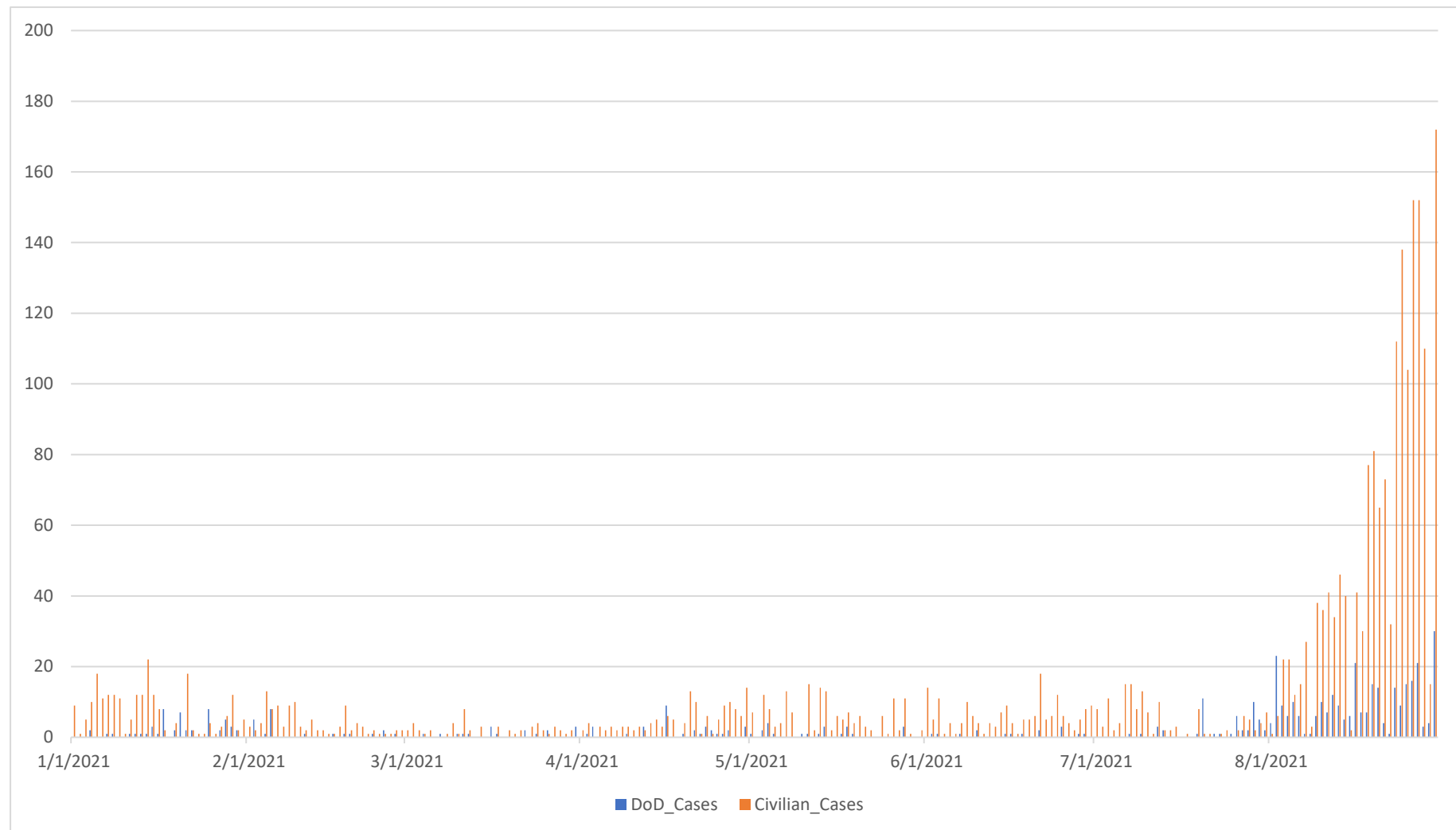
**FIGURE 5. AVAILABLE DATA FOR ALL OF 2021 ON THE PROPORTIONS OF SYMPTOMATIC AND ASYMPTOMATIC COVID-19 CASES**



**FIGURE 6. AVAILABLE DATA FOR JULY & AUGUST 2021 ON THE PROPORTIONS OF SYMPTOMATIC AND ASYMPTOMATIC COVID-19 CASES, WITH A RECENT INCREASE IN ASYMPTOMATIC CASES IN AUGUST**

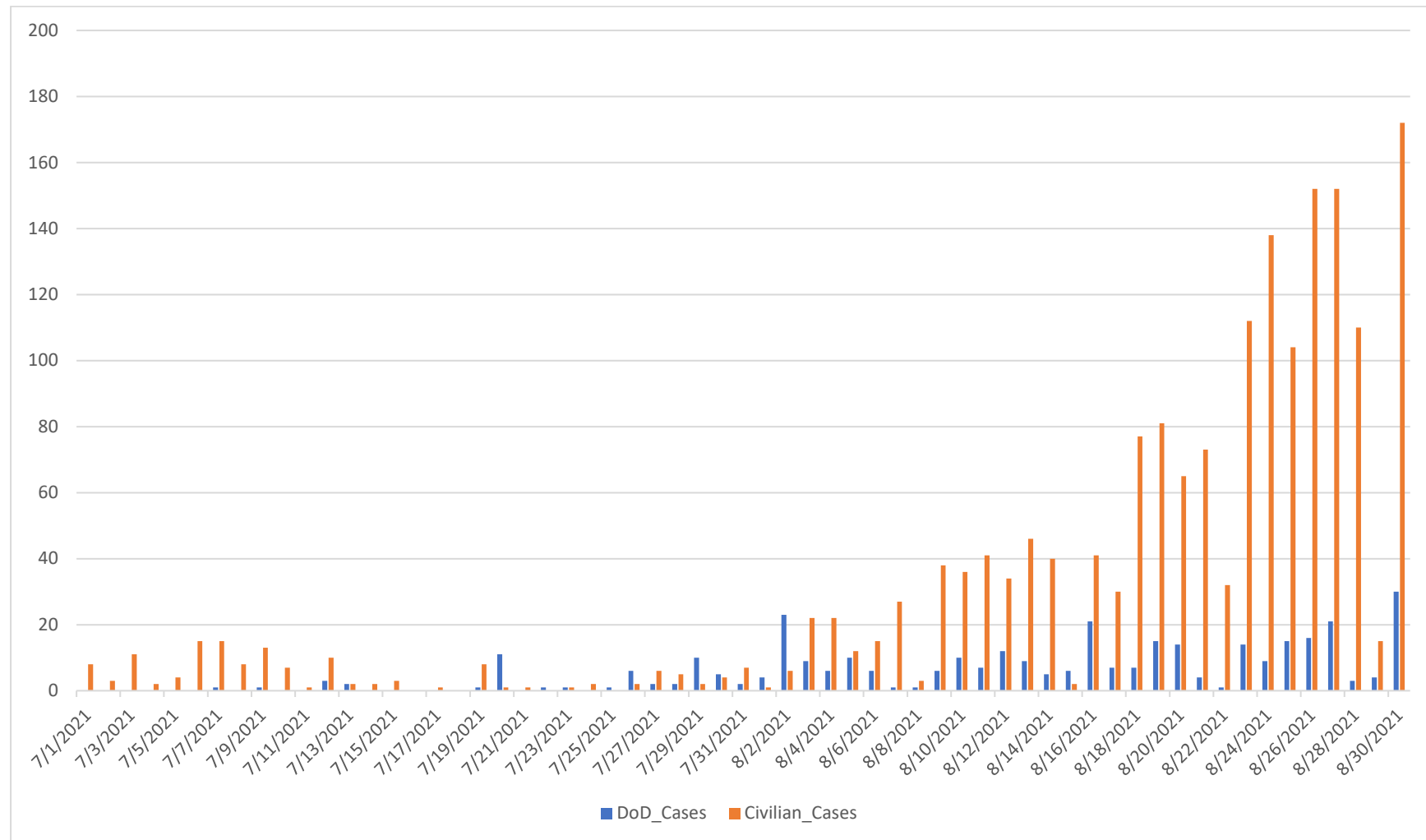


**FIGURE 7. AVAILABLE DATA FOR ALL OF 2021 SHOW THE NUMBERS OF DOD AND CIVILIAN COVID-19 CASES**

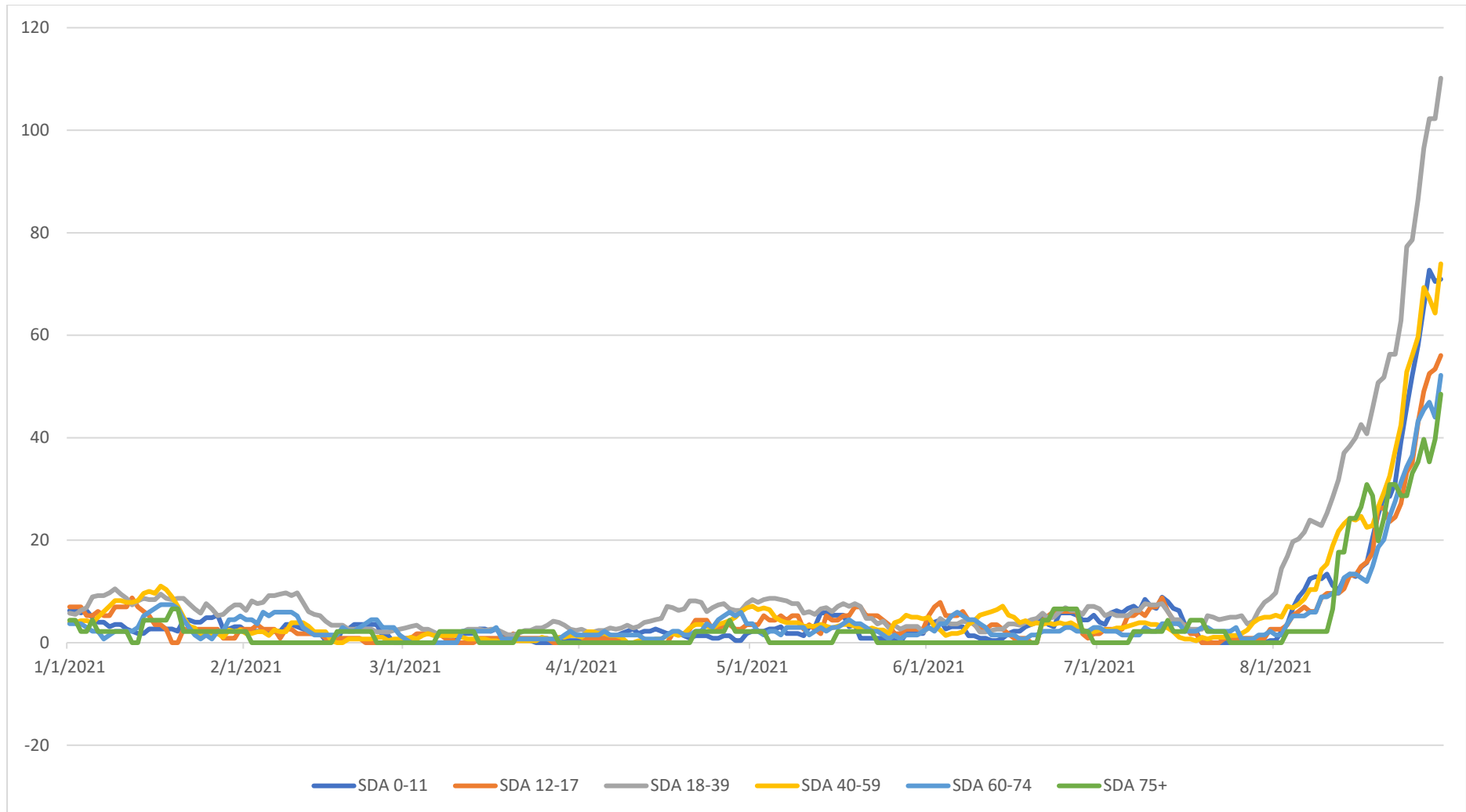




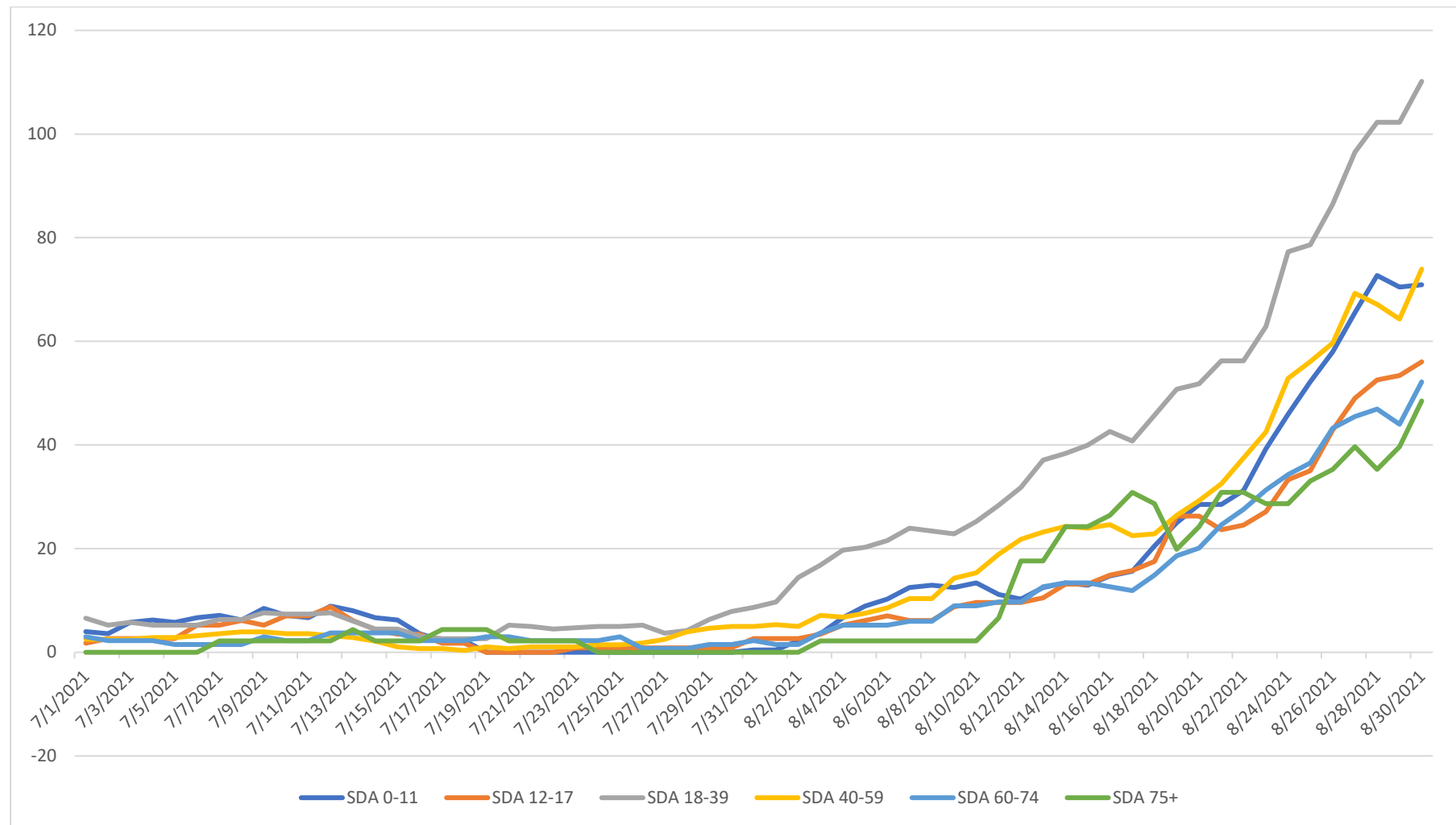
**FIGURE 8. AVAILABLE DATA FOR JULY & AUGUST 2021 SHOW DOD AND CIVILIAN COVID-19 CASE NUMBERS, WITH AN INCREASE IN MILITARY CASES NOTICED FIRST IN LATE JULY & EARLY AUGUST FOLLOWED BY A SURGE IN CIVILIAN CASES**



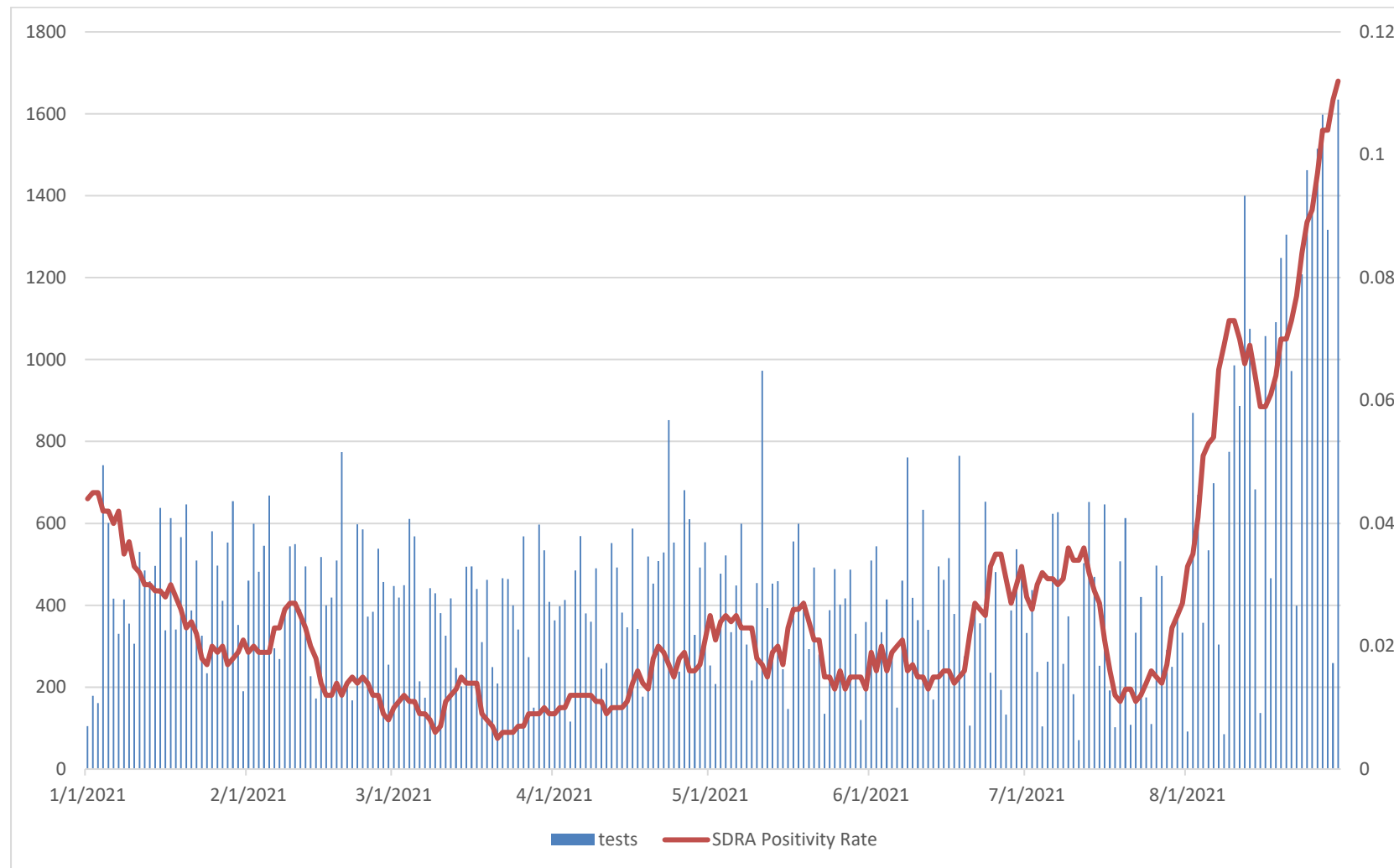
**FIGURE 9. AVAILABLE DATA FOR ALL OF 2021 SHOW THE AUGUST SURGE OF COVID-19 CASES BY AGE GROUPS**



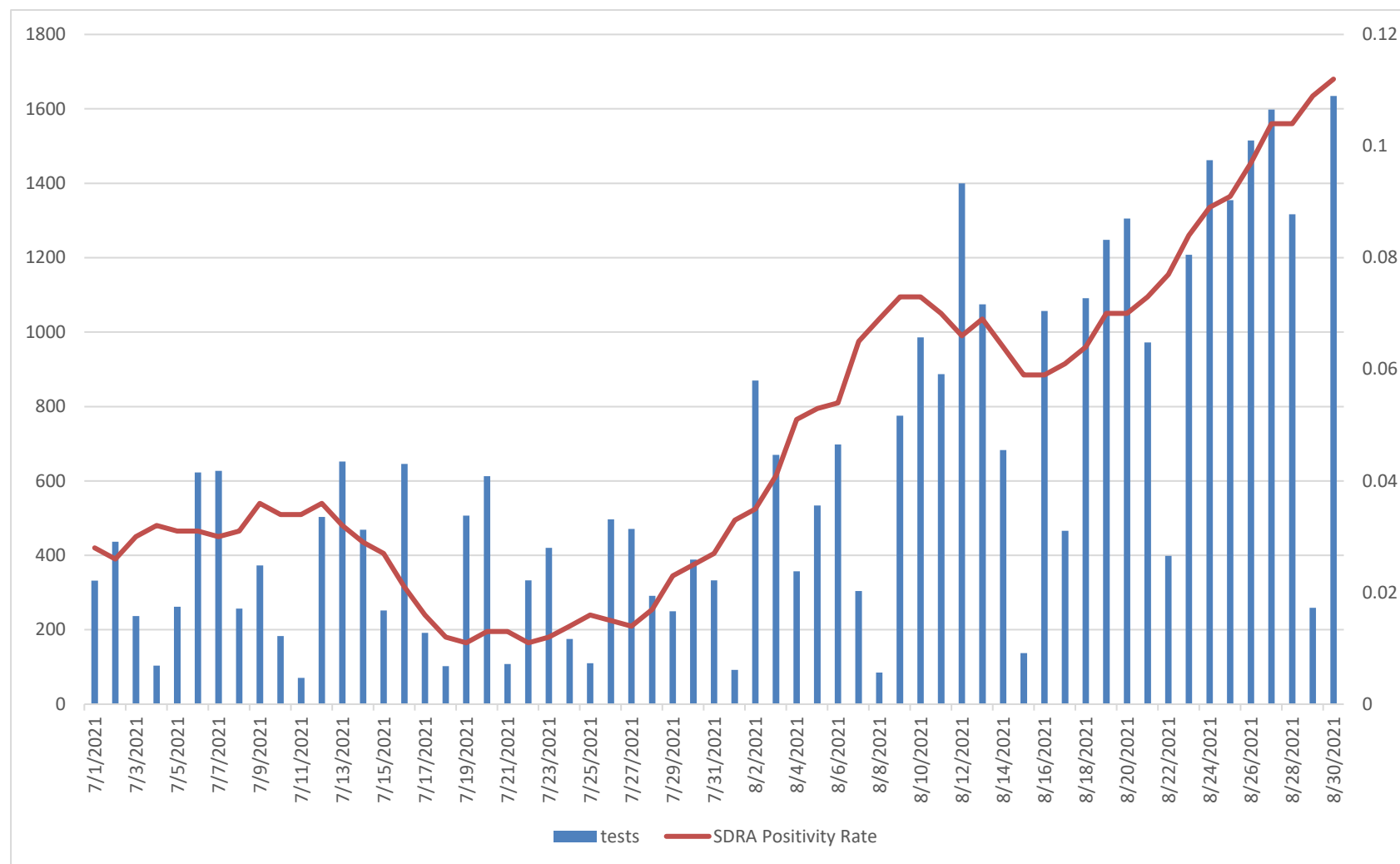
**FIGURE 10. AVAILABLE DATA FOR JULY & AUGUST 2021 SHOW THAT WHILE THERE IS AN INCREASE IN ALL AGE GROUPS WITH THE SURGE, THE MAJORITY OF THE RECENT SURGE IN COVID-19 CASES IS AMONG THOSE AGED 18-39 YEARS, FOLLOWED BY THOSE 40-59 YEARS, THOSE 0-11 YEARS AND THOSE 12-17 YEARS. EVEN THOUGH ALSO INCREASING, THE NUMBERS FOR ELDERLY 60-74 AND 75+ ARE LOWEST AMONG ALL AGE GROUPS.**



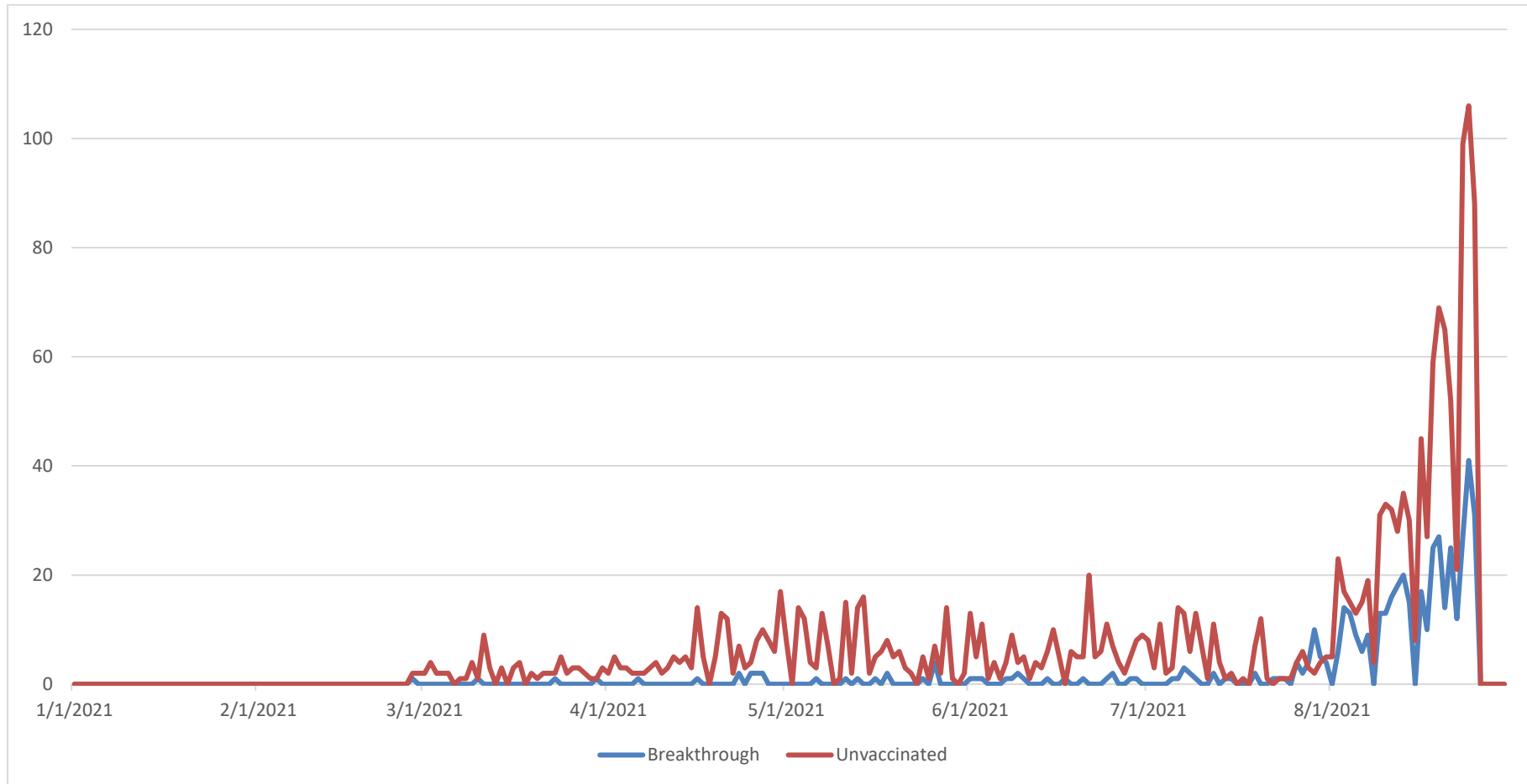
**FIGURE 11. AVAILABLE DATA FOR ALL OF 2021 SHOW THAT TEST POSITIVITY WAS STILL HIGH IN EARLY 2021, THEN DECREASED MARCH AND APRIL, INCREASED MORE IN JULY AND HAS SINCE SURGED IN AUGUST**



**FIGURE 12. AVAILABLE DATA FOR JULY & AUGUST 2021 SHOW THE RISE IN TEST NUMBERS AND THE TEST POSITIVITY RATE DURING THE AUGUST SURGE**



**FIGURE 13. AVAILABLE DATA FOR ALL OF 2021 SHOW BREAKTHROUGH CASE NUMBERS HAVE RISEN DURING THE AUGUST SURGE IN COVID-19 CASES, ALTHOUGH THE NUMBER OF CASES AMONG THE UNVACCINATED IS 6 TIMES HIGHER THAN AMONG THE UNVACCINATED.**



**A “BREAKTHROUGH” CASE IS DEFINED AS SOMEONE WHO WAS FULLY VACCINATED TWO WEEKS BEFORE THE LAB REPORT DATE AND SUBSEQUENTLY BECAME INFECTED WITH COVID-19.**

**FIGURE 12. AVAILABLE DATA FOR JULY & AUGUST 2021 SHOW THE PARALLEL RISE IN BREAKTHROUGH CASES DURING THE AUGUST 2021 SURGE, ALTHOUGH THE NUMBER OF CASES AMONG THE UNVACCINATED IS 6 TIMES HIGHER THAN AMONG THE UNVACCINATED.**

