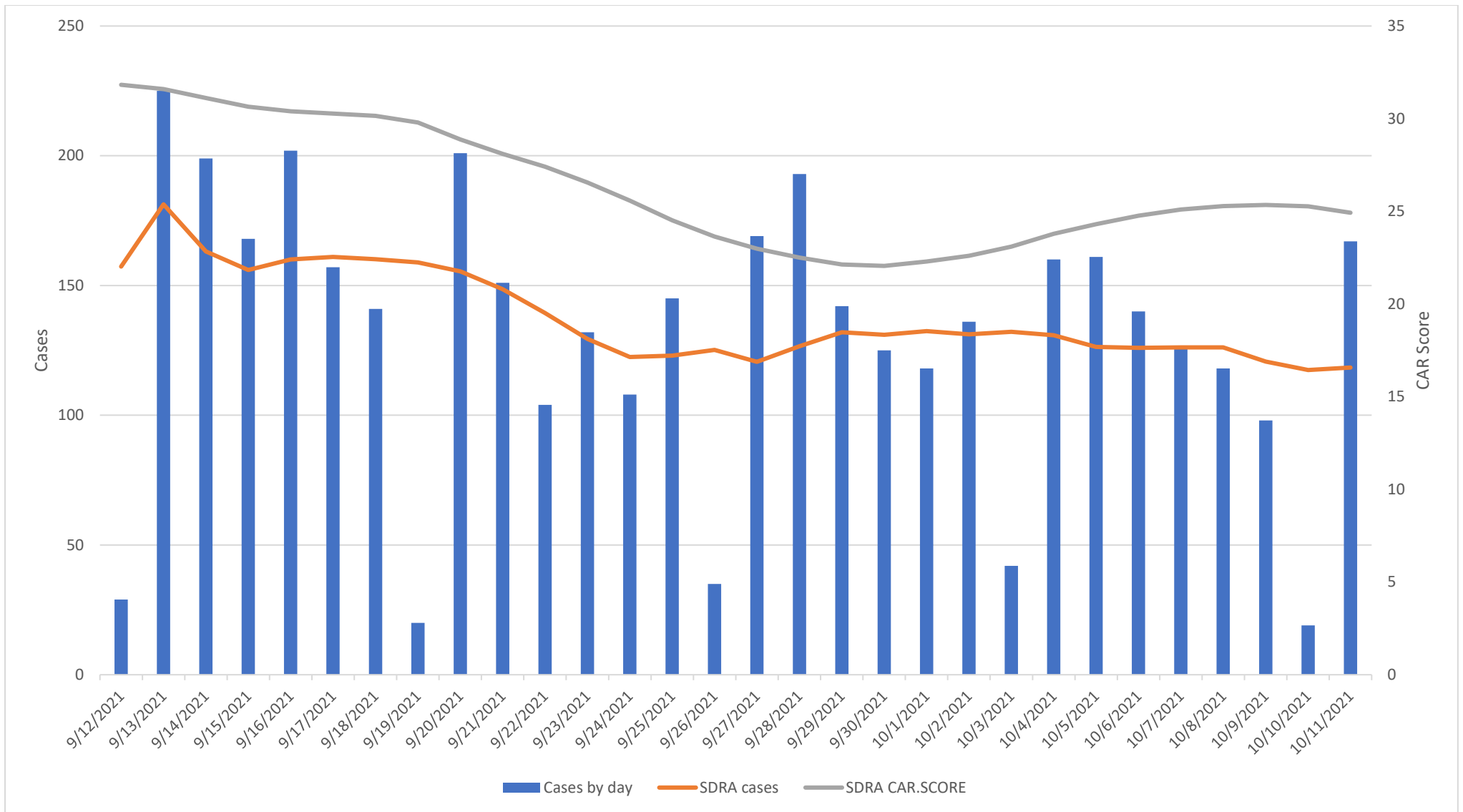




**COVID-19 DATA/SURVEILLANCE 2021 UPDATE:
COVID-19 SURGE TRENDS AND BREAKTHROUGH CASES SUMMARY**

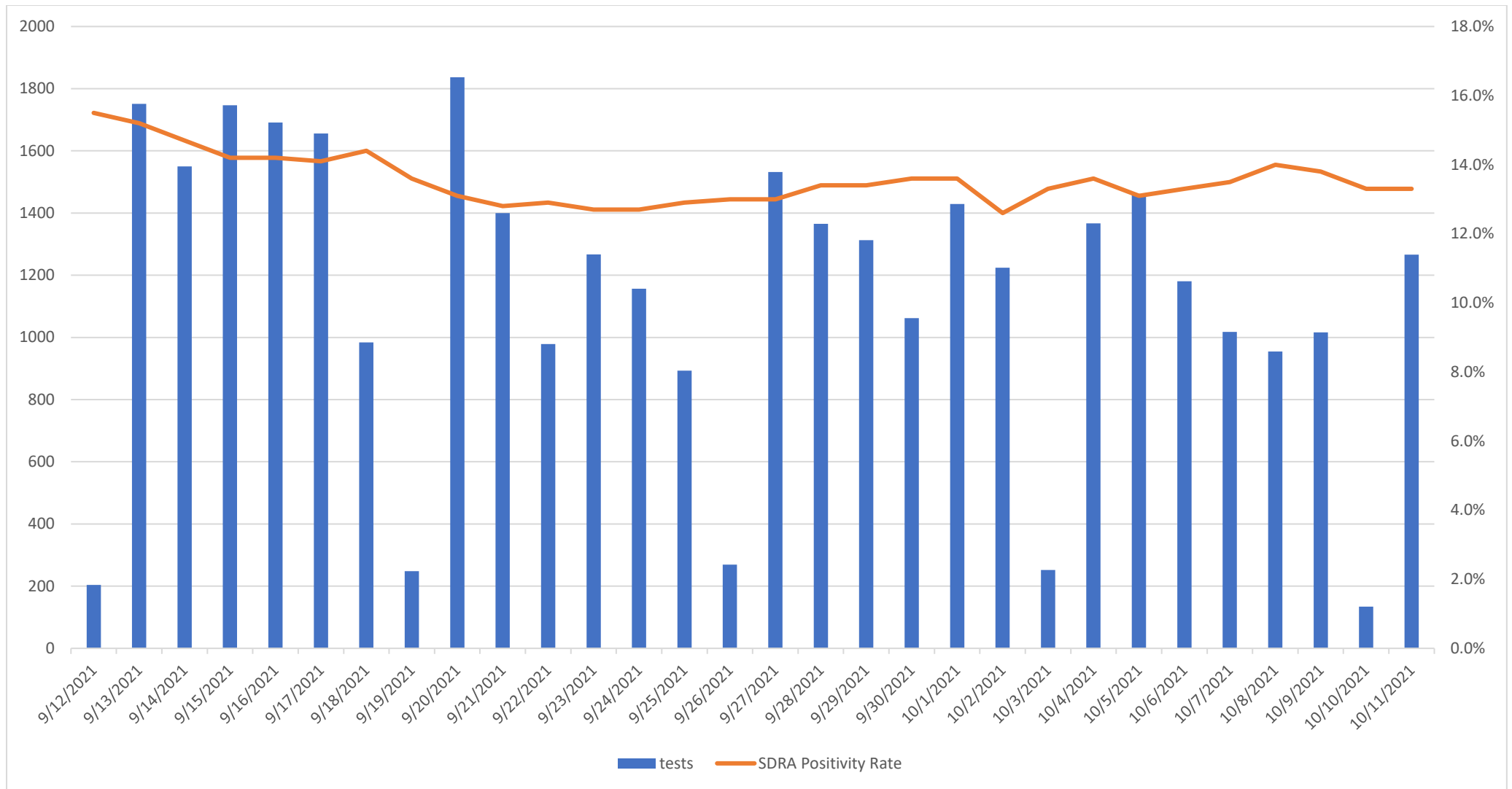
**OFFICE OF EPIDEMIOLOGY AND RESEARCH & COVID-19 SURVEILLANCE UNIT
GUAM DEPARTMENT OF PUBLIC HEALTH AND SOCIAL SERVICES**

10/15/2021 CORRECTED AND UPDATED

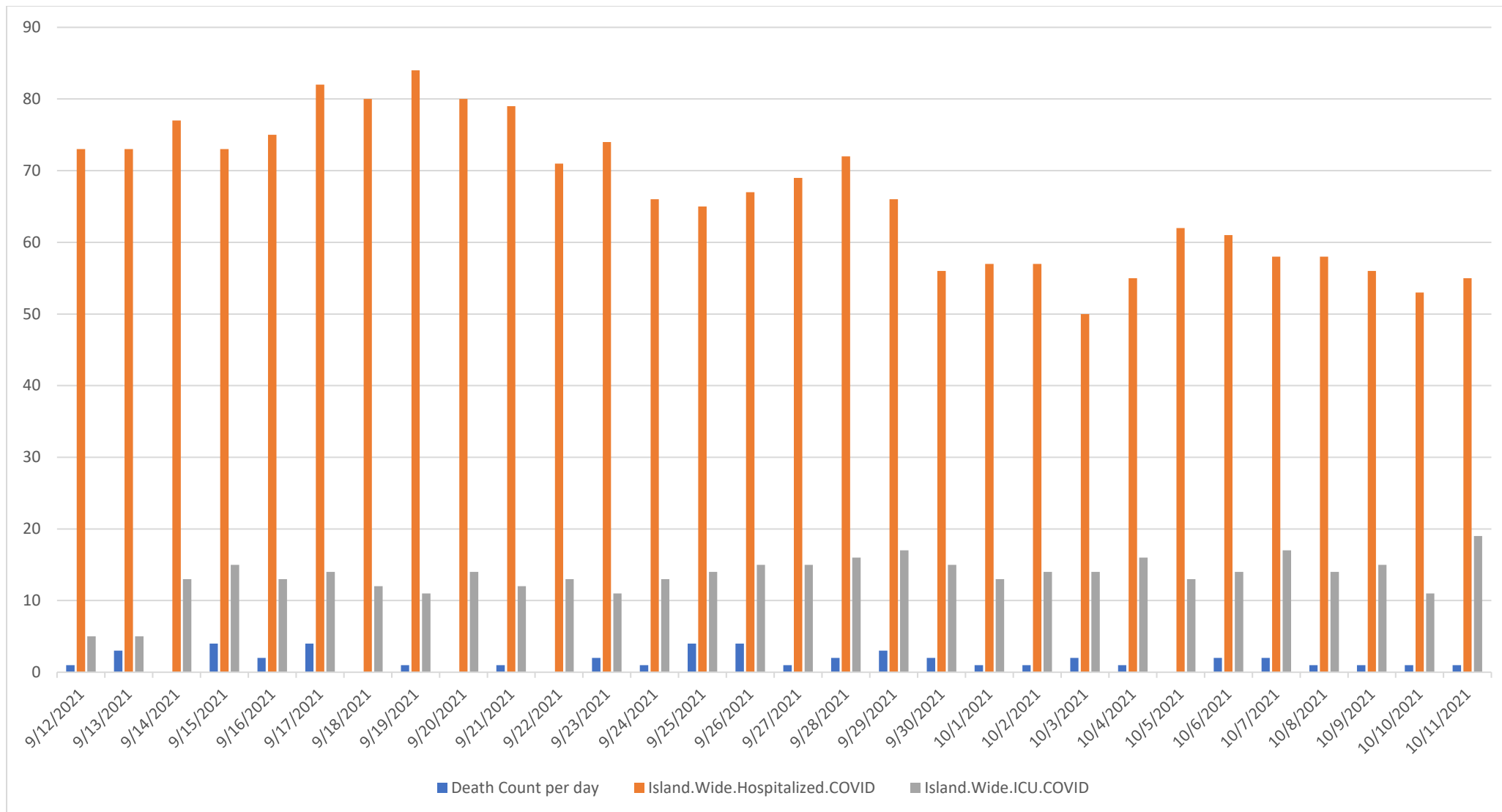


The rolling average of cases continues to fall at a slow and steady pace, and is currently at 118 cases per day on the Seven Day Rolling average.

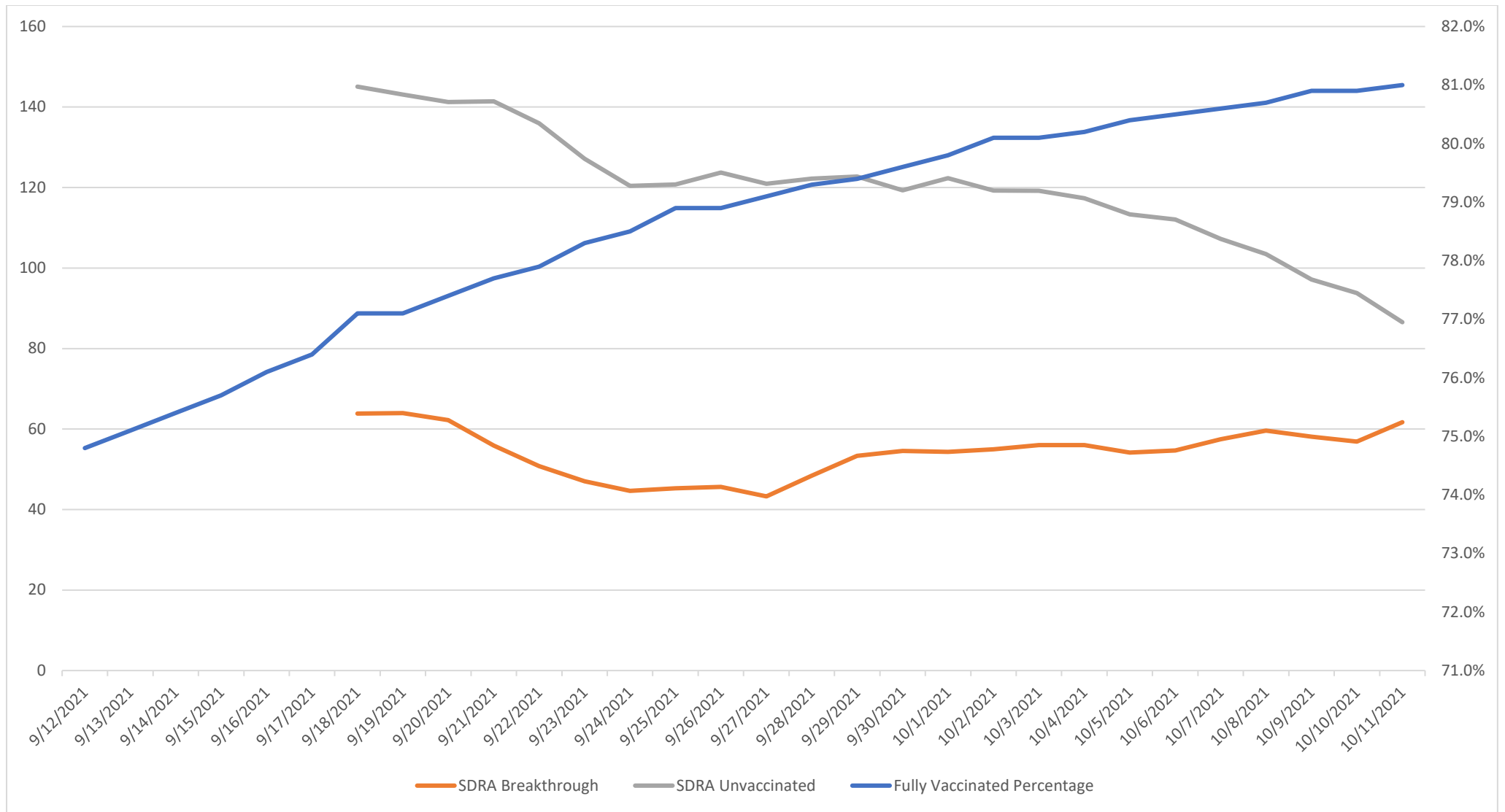
The CAR Score although continues to fluctuate between 20-25 but in total downward trend as well.



We are starting to observe a decrease in the numbers of tests that are being performed daily to less than 1000 tests per day, with the same positivity rate.

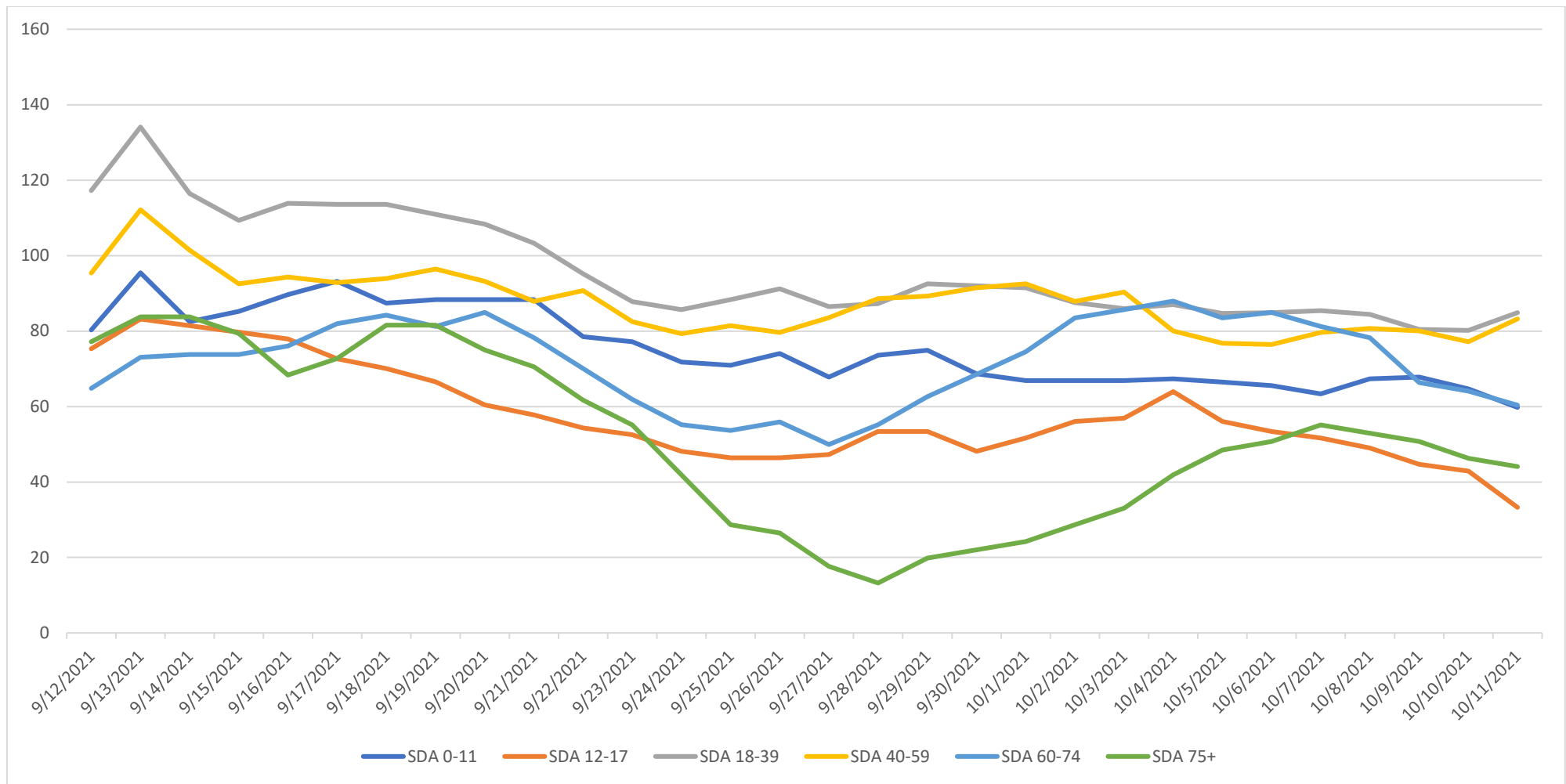


The hospital numbers continue to decrease, while the ICU numbers remain the same, with deaths continuing but decreasing.



Unvaccinated persons continuing to be the majority of infected cases in the population, while breakthrough cases through the surge have sustained a similar case rate.

We have finally close to 80% of the eligible population (12+) being fully vaccinated, which only includes civilian data not inclusive of the DoD vaccinated numbers.



Case rates are beginning to fall and the age groups are starting to converge. The same groups maintain the highest rates, 18-39 years followed by the 40-59 years. Those 0-11 years and 60-74 years are also beginning to converge, while the 75+ years rate is now higher than the 12-17, which likely correlates to more in the 12-17 years group beginning to become fully vaccinated.

GUAM						
COVID-19 CASES	2020		2021	As of 10/13/2021	TOTAL	
	N	Percent	N	Percent	N	Percent
0-11 years	564	7.7%	1,508	16.1%	2,072	12.4%
12-17 years	406	5.5%	627	6.7%	1,033	6.2%
18+ years	6,366	86.8%	7,220	77.2%	13,586	81.4%
TOTAL	7,336	100.0%	9,355	100.0%	16,691	100.0%
COVID-19 DEATHS	2020		2021	As of 10/13/2021	TOTAL	
	N	%	N	%	N	Percent
0-11 years	1	0.8%	2	2.2%	3	1.4%
12-17 years	0	0.0%	1	1.1%	1	0.5%
18+ years	132	99.2%	86	96.6%	218	98.2%
TOTAL	133	100.0%	89	100.0%	222	100.0%

Examining COVID-19 cases by age groups, children 0-11 years have represented a higher proportion of cases in 2021 than in 2020, and a smaller proportion of the deaths in 2021 than in 2020. Overall, children ages 0-11 years have represented 12.4% of cases and 1.4% of deaths.

BREAKTHROUGH CASES:

From 2/7/2021 to 10/7/2021, there have been 2,859 “breakthrough” cases among people who were fully vaccinated and subsequently tested positive. These breakthrough cases were evenly distributed among males (50.7%) and females (49.3%). The majority of breakthrough cases occurred among those ages 18-39 (42.6%) and those 40-59 (35.1%), which are also the main age groups of positive cases during the surge.

There were 15.4% breakthrough cases among those aged 60-74, 4.3% among those age 12-17 and 3.6% among those ages 75 or older. The average number of days between final vaccination dose and receipt of a positive test was 146.29 days or 4 and one-half months.

CORRECTION & UPDATE: As of 10/14/2021, there were 97,403 fully vaccinated civilians, with 2,793 civilian "breakthrough cases" or 2.9%.

Among deaths in 2021 up to 10/14/2021, fully vaccinated were n=13 or 14.6 % (all of whom had multiple co-morbidities).

The majority of the breakthrough cases were Pfizer vaccines (64.9%), followed by Moderna (26.4%) and Johnson & Johnson (6.4%) with 2.3% unknown (DoD), but these are similar to the proportions among the fully vaccinated in the Guam population as of 10/7/2021:

WebIZ data	VACCINATED TOTALS		BREAKTHROUGH CASES	
As of 10/7/2021	N	Percent	N	Percent
Pfizer fully vaccinated	61,993	63.61%	1,856	64.9%
Moderna fully vaccinated	29,839	30.62%	754	26.4%
J&J	5,631	5.78%	183	6.4%
DOD/UNKNOWN	NOT APPLICABLE	NOT APPLICABLE	66	2.3%
TOTAL	97,463	100.0%	2,859	100.0%

As noted in previous reports the patterns observed during Guam's surge from July 2021 to the present are consistent with what would be expected with the Delta variant of COVID-19: Increasing numbers of breakthrough cases as well as increasing numbers of asymptomatic cases, along with high numbers of deaths in August and September, particular DOA-Dead on Arrival.

Sequencing results from the CDC now confirm that Delta has been circulating on Guam. Sequencing results received 10/8/2021 show that of the 67 samples sent to CDC from 7/25/2021 to 8/10/2021, 59 were Delta (B.617.2) or Delta AY variants (88%).

Data on trends are compiled by Vince Campo, CDC Foundation Research and Statistical Systems Analyst, DPHSS COVID-19 Surveillance Unit and reviewed by the Territorial Epidemiologist. For more information, contact the Territorial Epidemiologist: ann.pobutsky@dphss.guam.gov or (671) 888-9276 (WARN).