

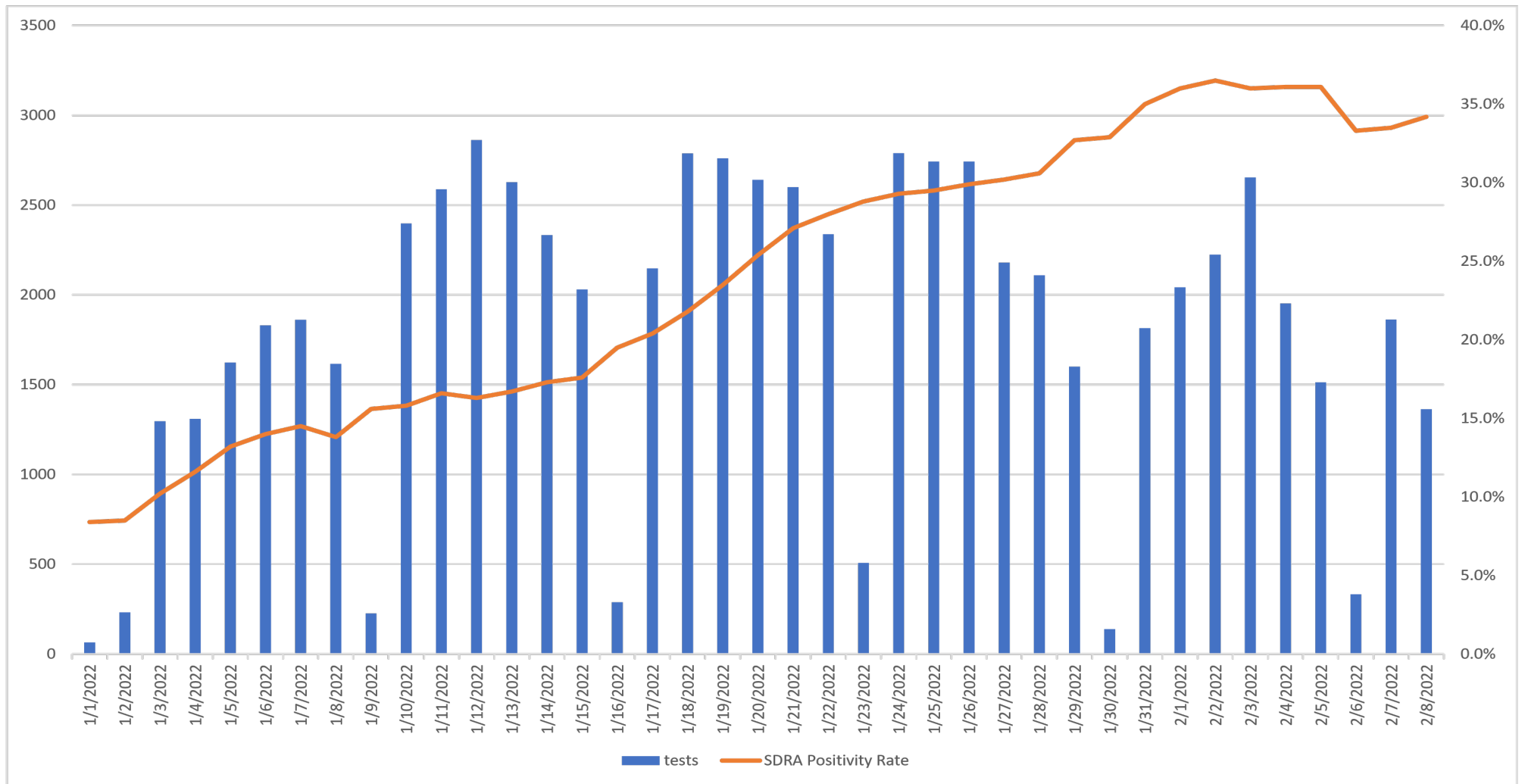


COVID-19 DATA/SURVEILLANCE UPDATE

TRENDS JANUARY 1- FEBRUARY 8, 2022

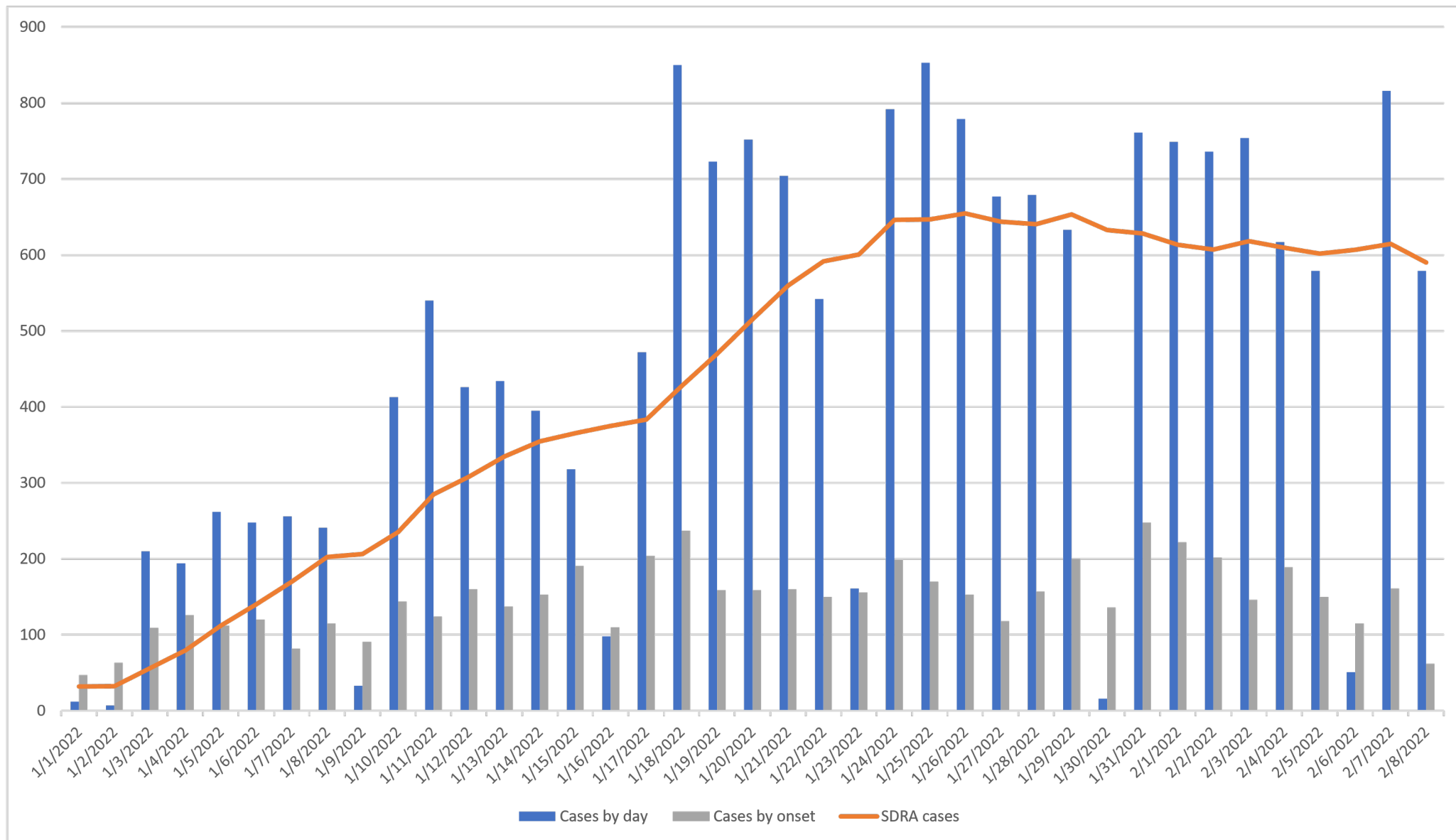
**OFFICE OF EPIDEMIOLOGY AND RESEARCH & COVID-19 SURVEILLANCE UNIT
GUAM DEPARTMENT OF PUBLIC HEALTH AND SOCIAL SERVICES**

2/10/2022



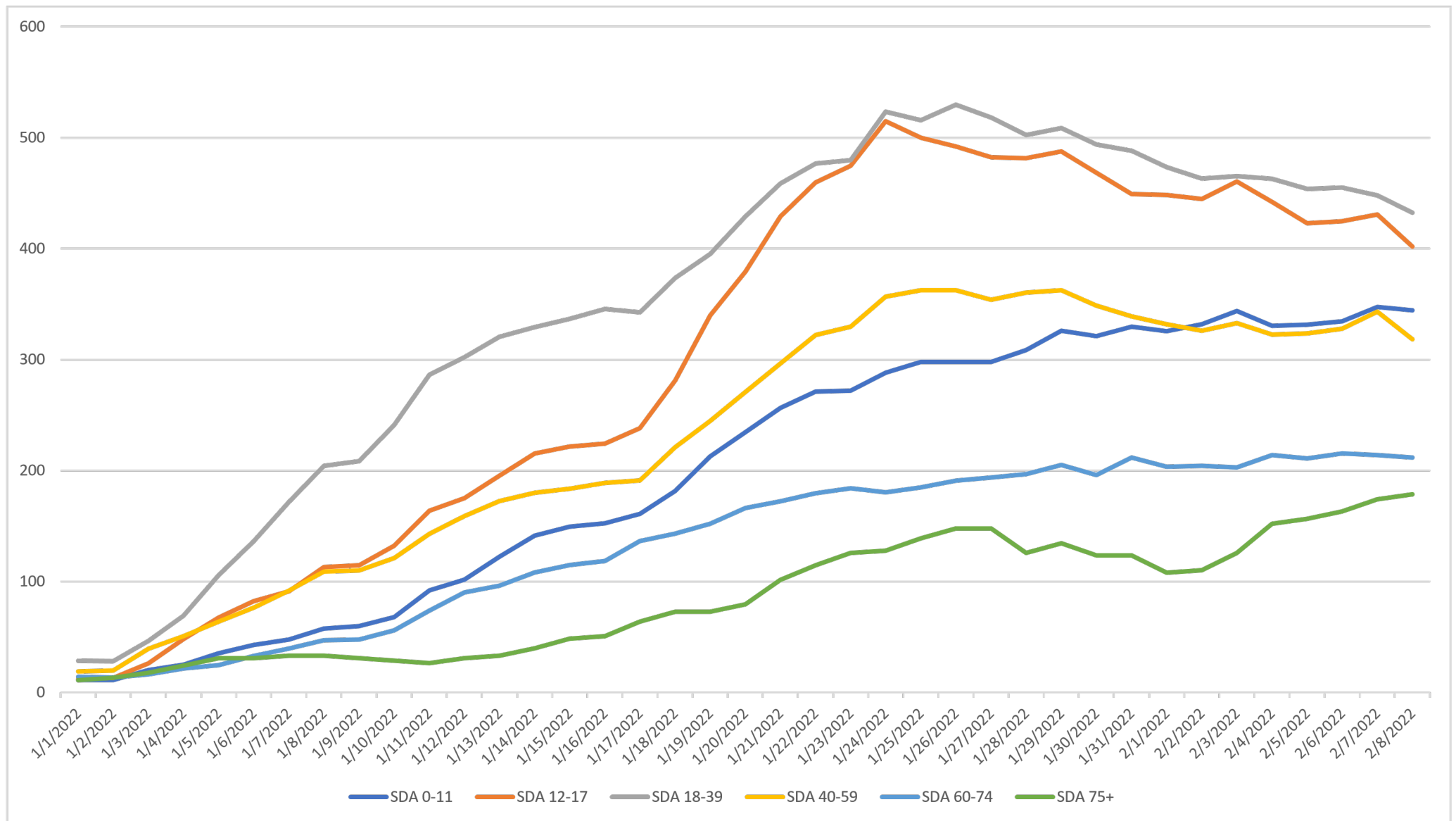
The last day for “testing for any reason” was January 25th, 2022.

Since January 1, to February 8, 2022 more than 70,000 tests have been performed. As the testing strategy strategy changed, there has been a decrease in testing after January 25th, but the test positivity remains at 35%.

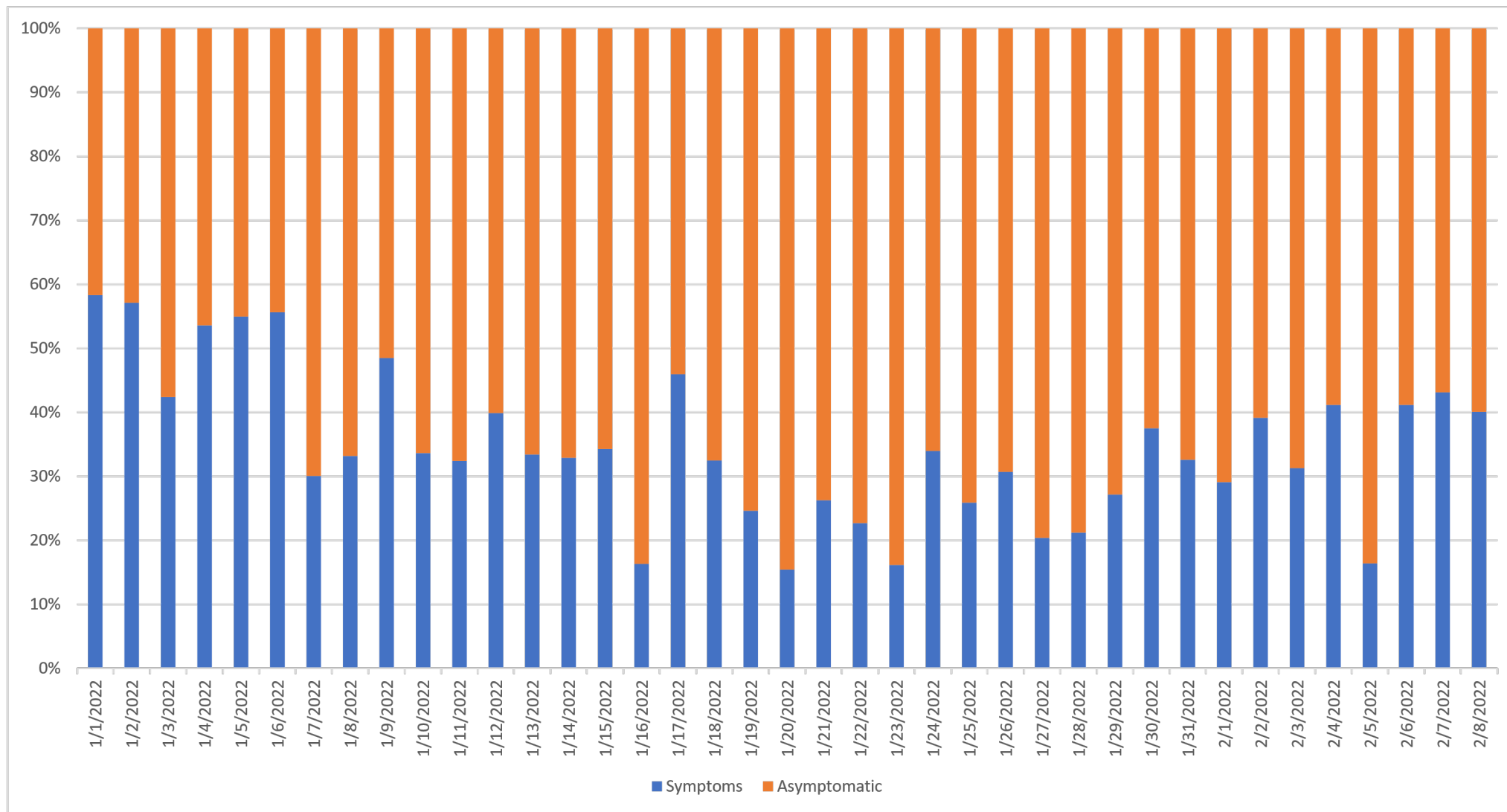


The Seven-Day Rolling Average (SDRA) case rate is averaging 600 cases per day.

Cases in blue are those cases that are reported by day, and in gray, are symptomatic cases that reported a symptom onset date.

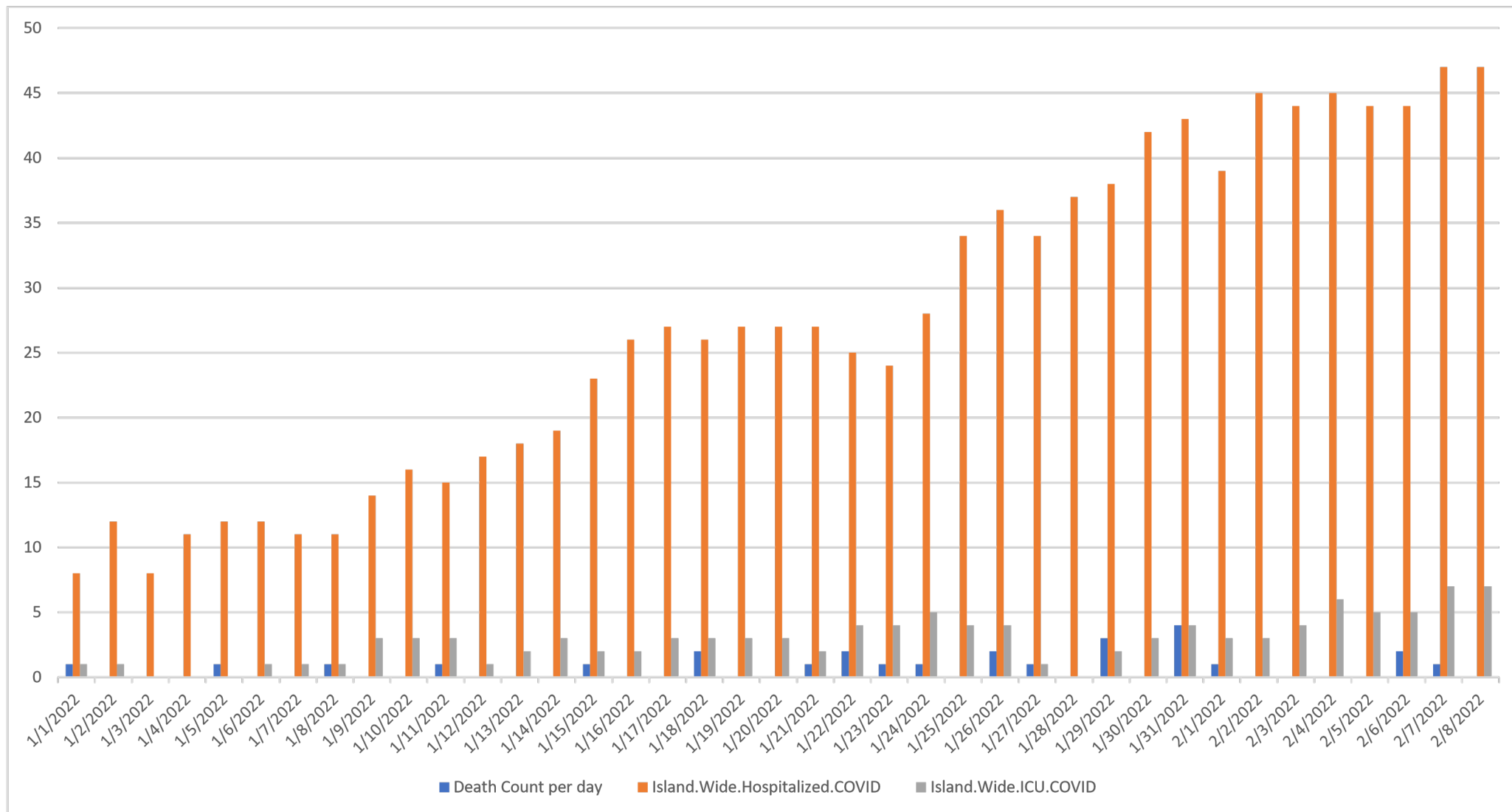


Assessing cases by age groups, those 18-39 years continue to lead with the greatest number of cases, followed by those 12-17 years. However, after January 25th, all age groups are beginning to converge.



There is a continued decline in the proportion of cases with symptoms throughout January 2022.

Since the testing strategy changed on January 25, 2022, there are higher proportions of symptomatic cases in early February with 35% of cases reporting symptoms.



As cases have increased during this surge, there is a subsequent increase in the hospital census.

There is an increase in the ICU's and an increase in COVID-19 related deaths, particularly DOA's in 2022.

Data compiled by Vince Campo, CDC Foundation Surveillance Unit lead analyst.

For more information, contact the Territorial Epidemiologist: ann.pobutsky@dphss.guam.gov or (671) 888-9276 (WARN).