

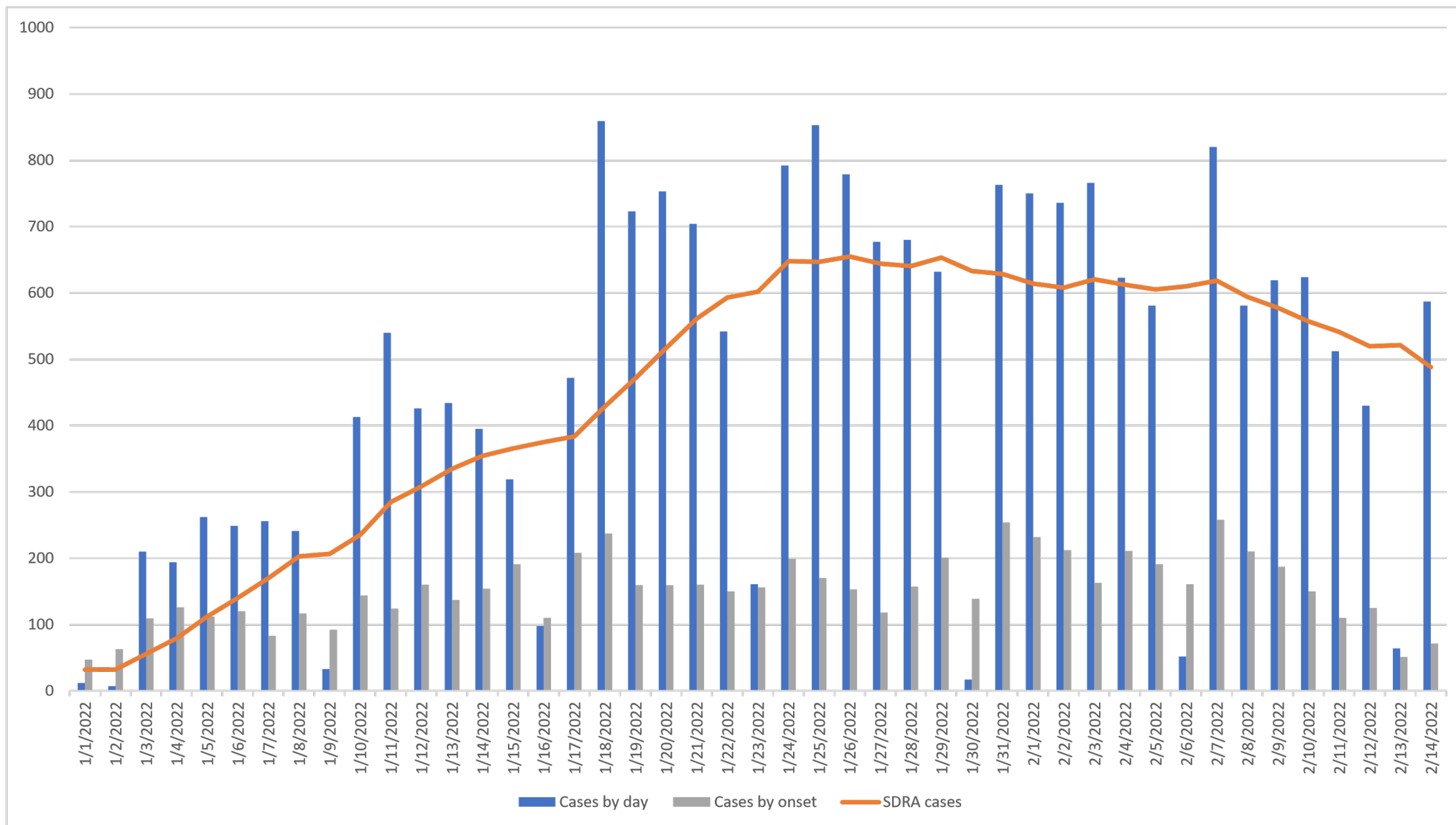


COVID-19 DATA/SURVEILLANCE UPDATE

TRENDS JANUARY 1- FEBRUARY 14, 2022

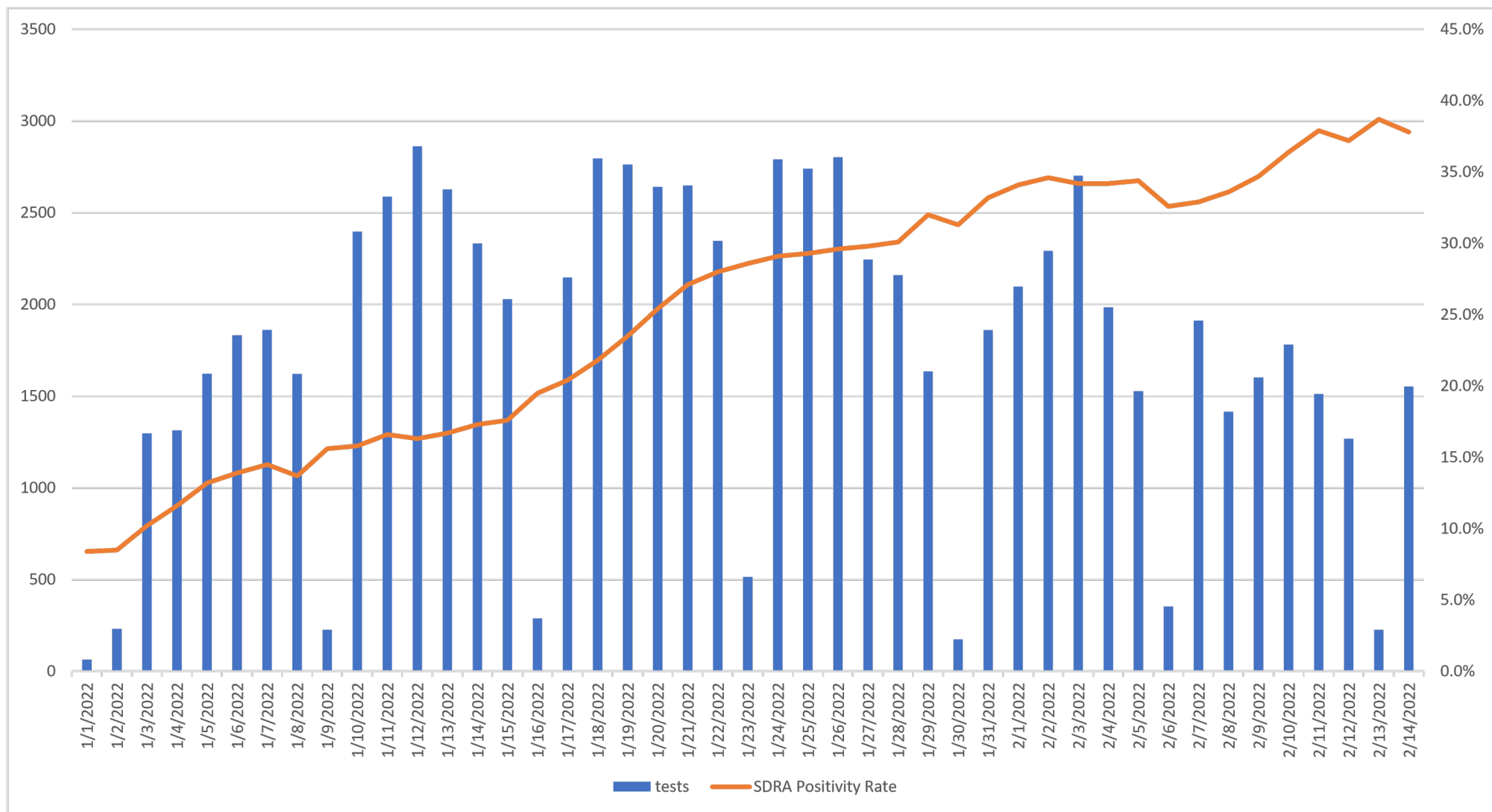
**OFFICE OF EPIDEMIOLOGY AND RESEARCH & COVID-19 SURVEILLANCE UNIT
GUAM DEPARTMENT OF PUBLIC HEALTH AND SOCIAL SERVICES**

2/16/2022



January 29th shows a start of an initial decline in case rates.

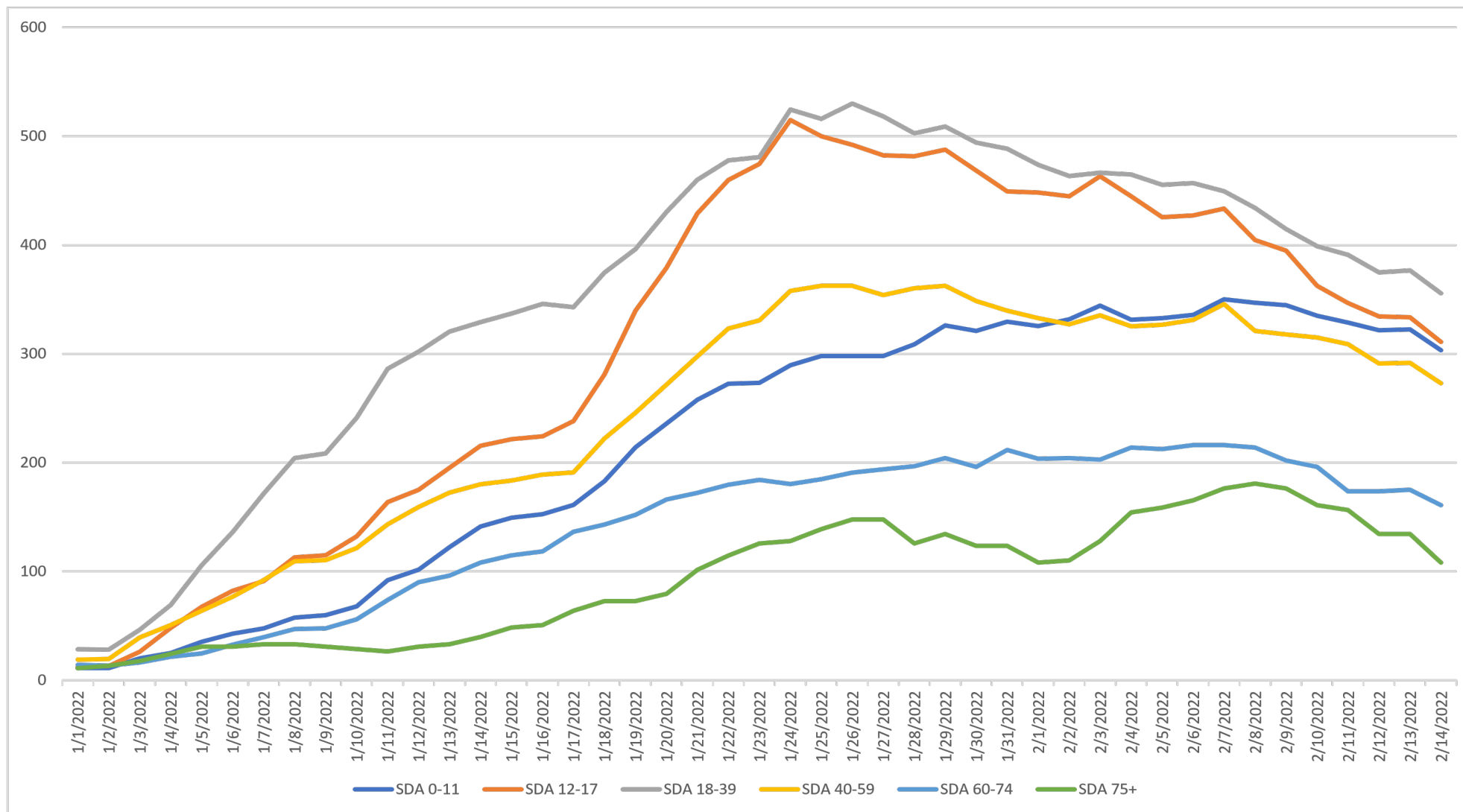
The SDRA of cases is now about 500 per day which offsets our peak average at around 650.



The last day for “testing for any reason” was January 25th, 2022.

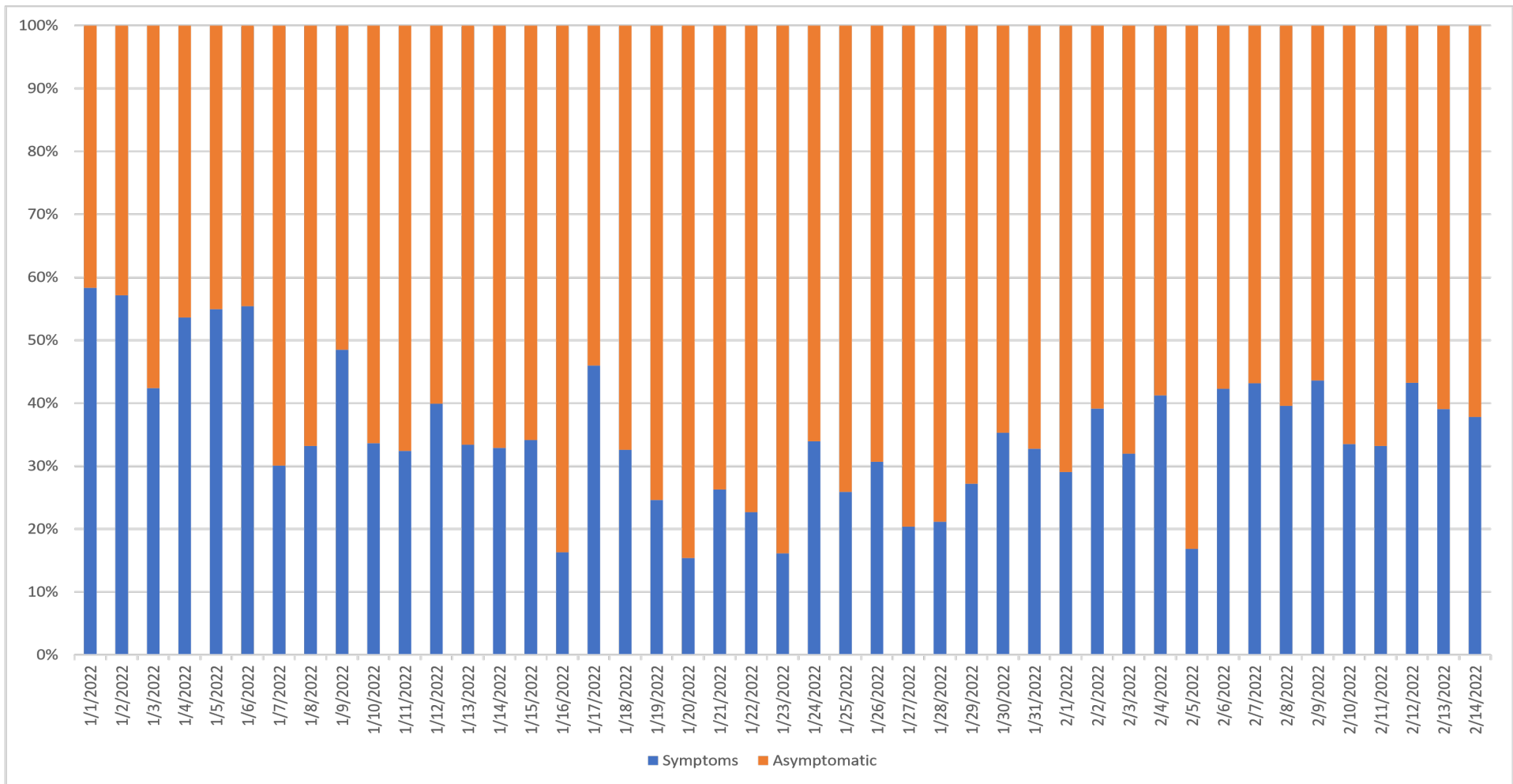
By mid-February there is a decrease in testing, down by a 1/3 of what was reported in late January and the beginning of February.

The SDRA is about 1300 tests conducted per day, with the test positivity rate high at almost 40%.

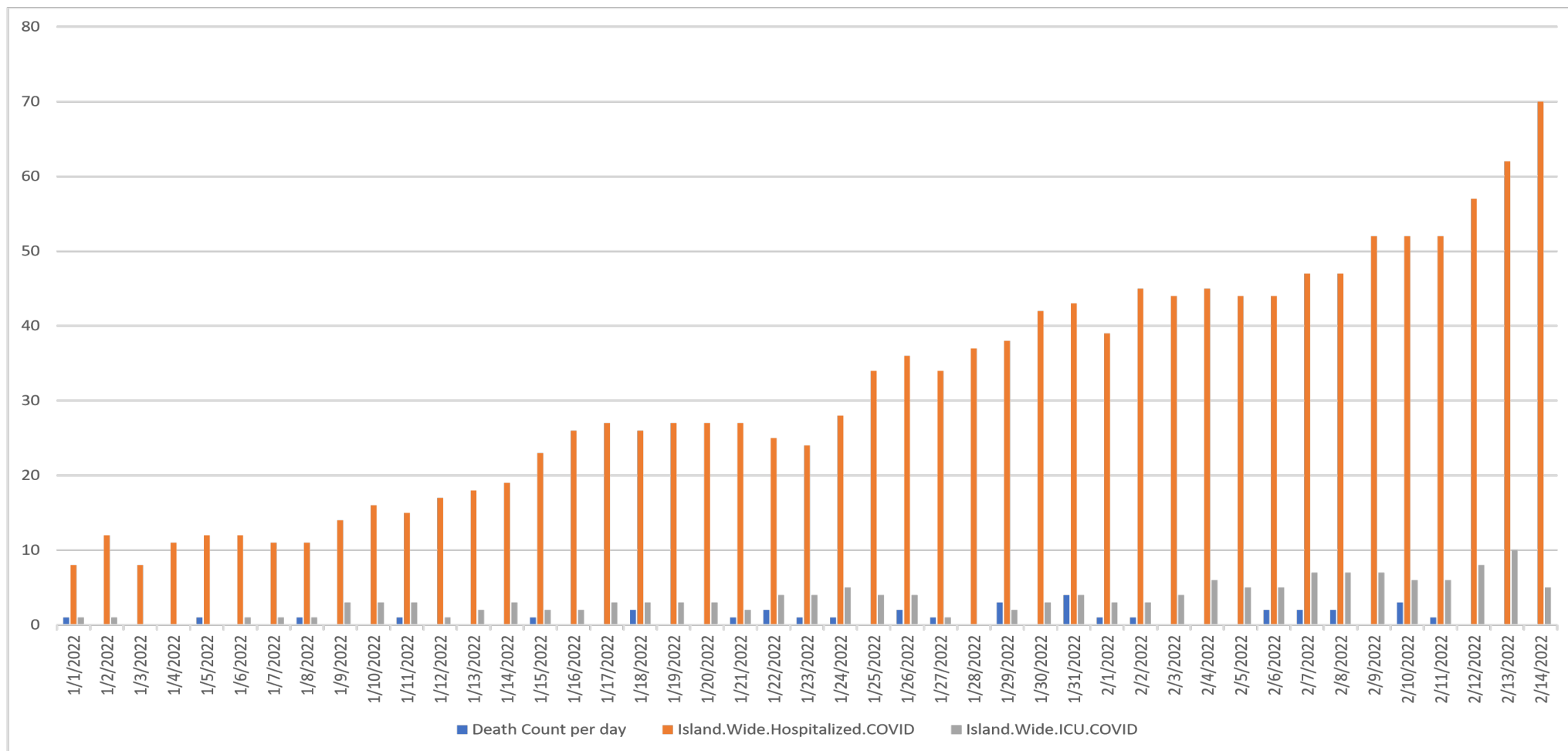


Declining case rates show a concomitant decline across all age groups.

Those 18-39 years continue to lead with the greatest number of cases, followed by those 12-17 years.



The proportion of symptomatic cases is now averaging 40% of cases.



The surge at the hospitals continues, with continued increases in the daily hospital census.

There is an increase in the ICU's, but remaining less than 10 daily cases. Deaths appear sporadically.

Data compiled by Vince Campo, CDC Foundation Surveillance Unit lead analyst.

For more information, contact the Territorial Epidemiologist: ann.pobutsky@dphss.guam.gov or (671) 888-9276 (WARN).