

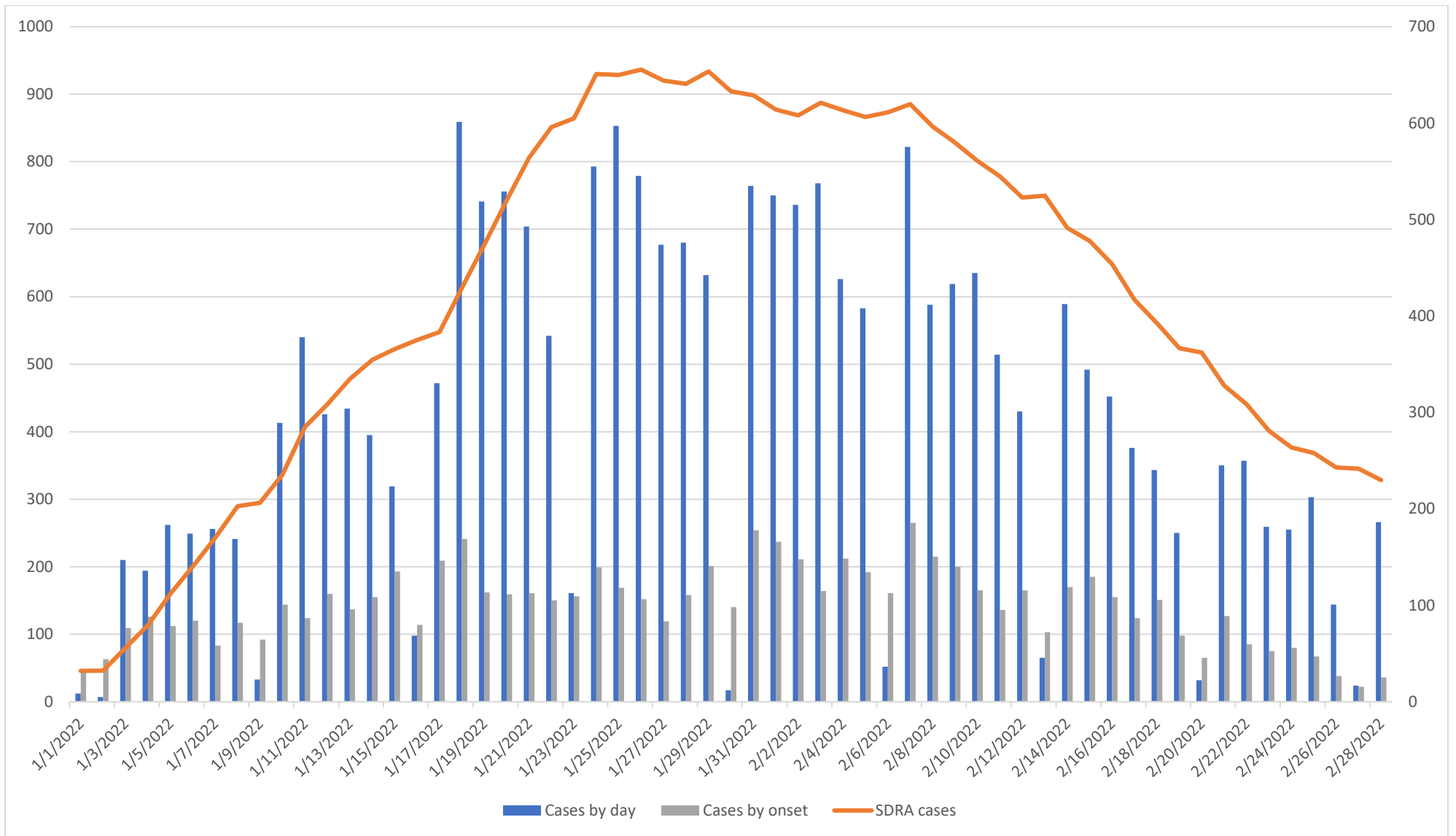


COVID-19 DATA/SURVEILLANCE UPDATE

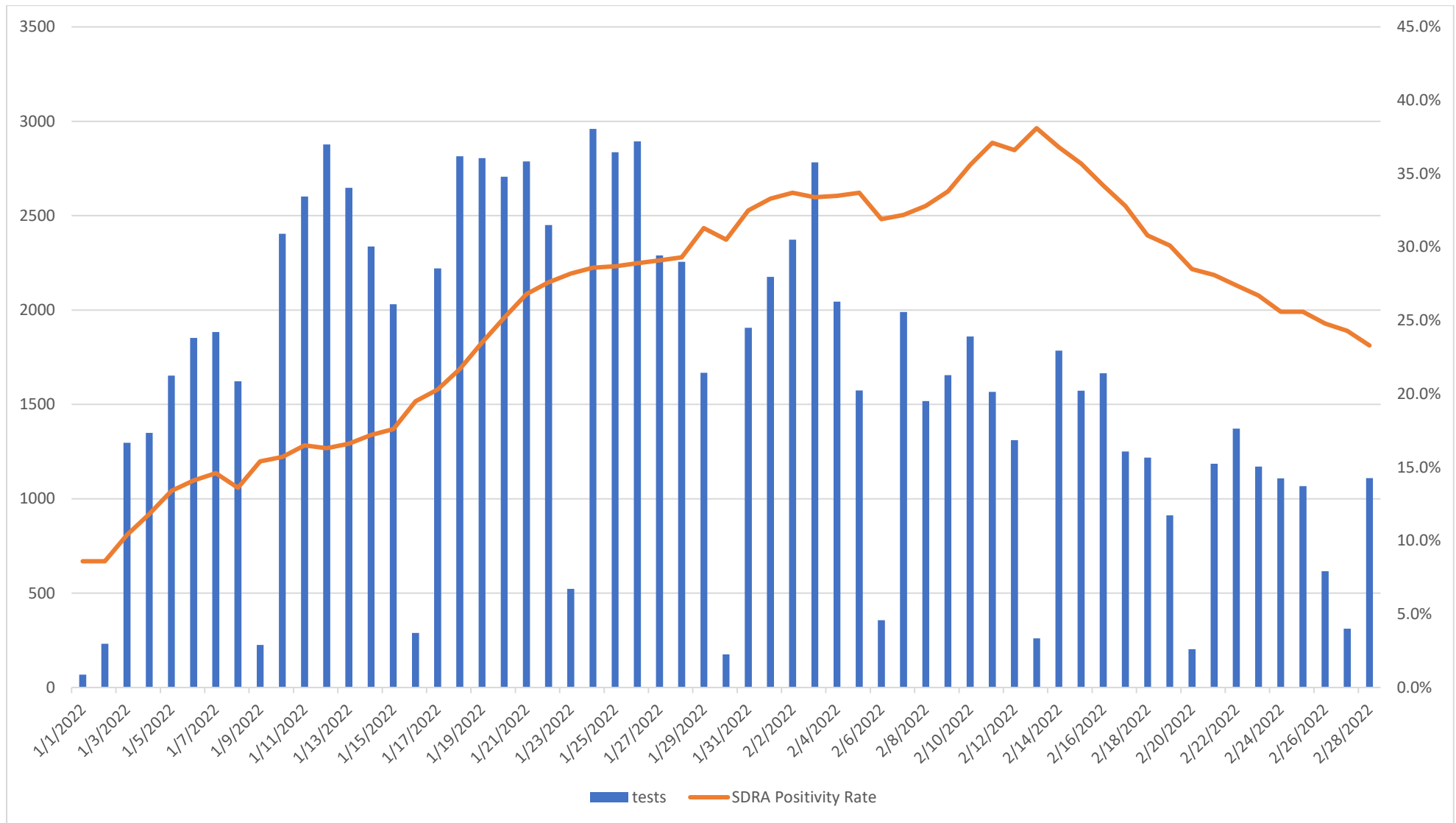
TRENDS JANUARY 1- FEBRUARY 28, 2022

**OFFICE OF EPIDEMIOLOGY AND RESEARCH & COVID-19 SURVEILLANCE UNIT
GUAM DEPARTMENT OF PUBLIC HEALTH AND SOCIAL SERVICES**

3/3/2022

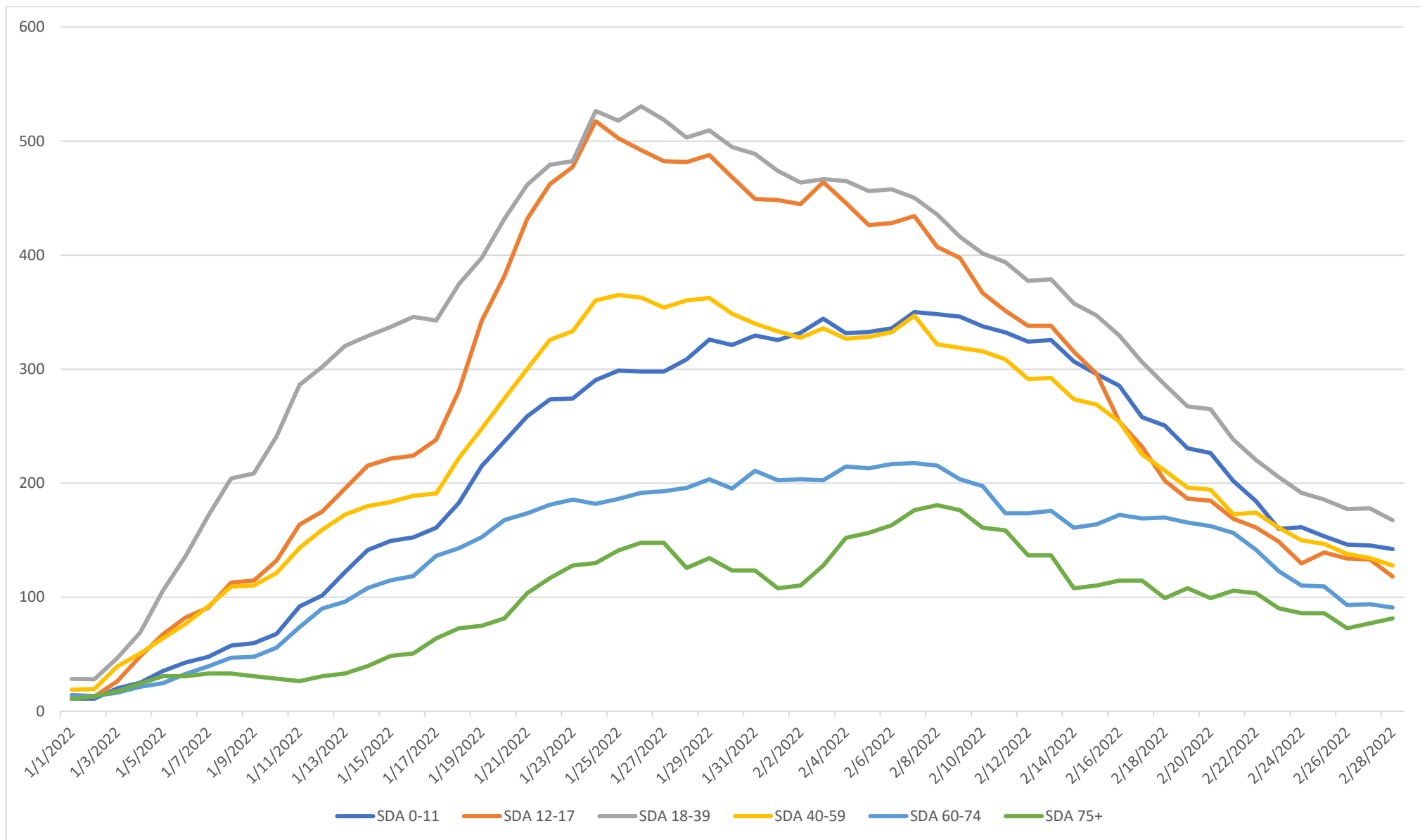


The SDRA of cases is now less than 250 per day.

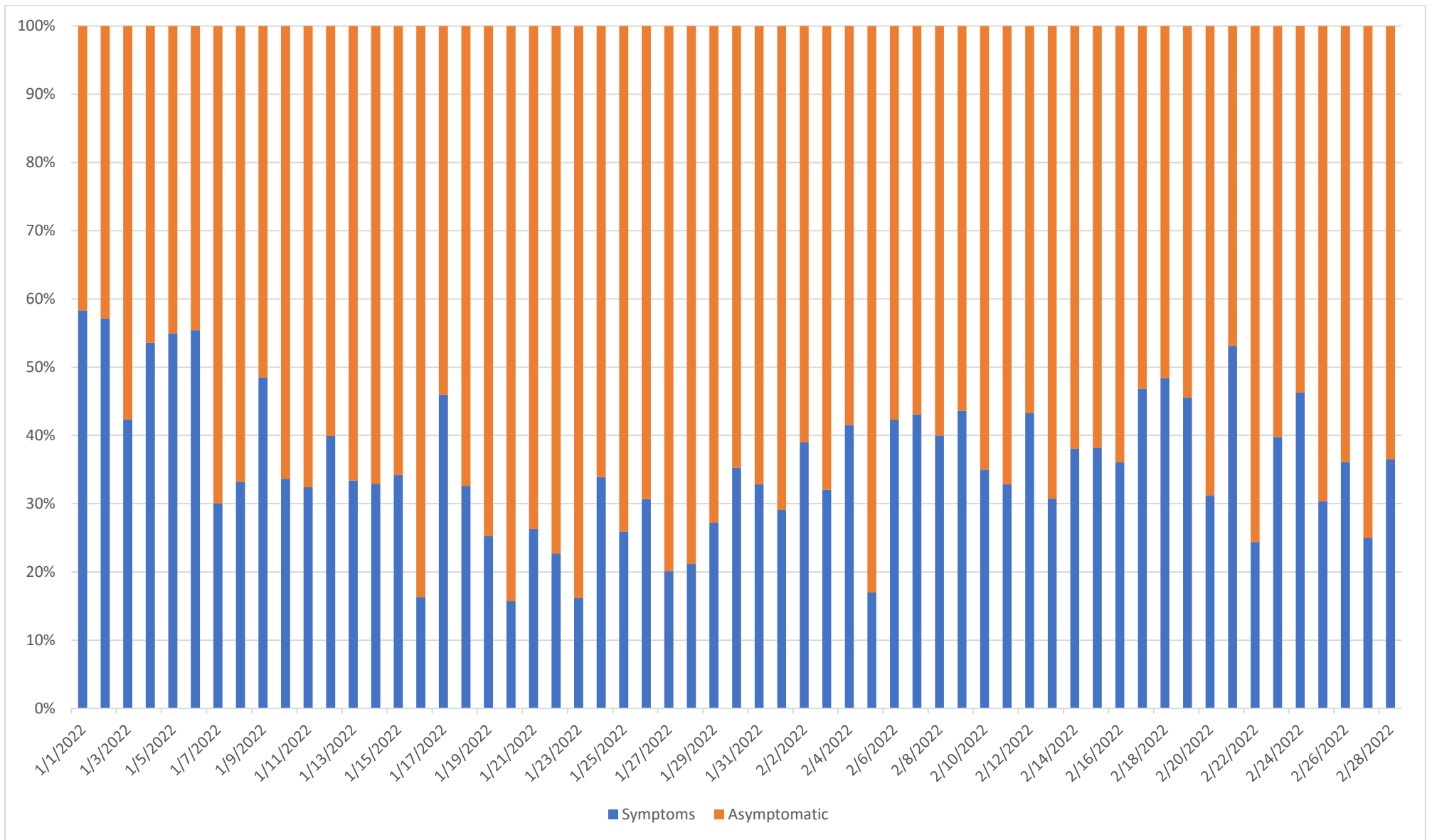


The last day for “testing for any reason” was January 25th, 2022.

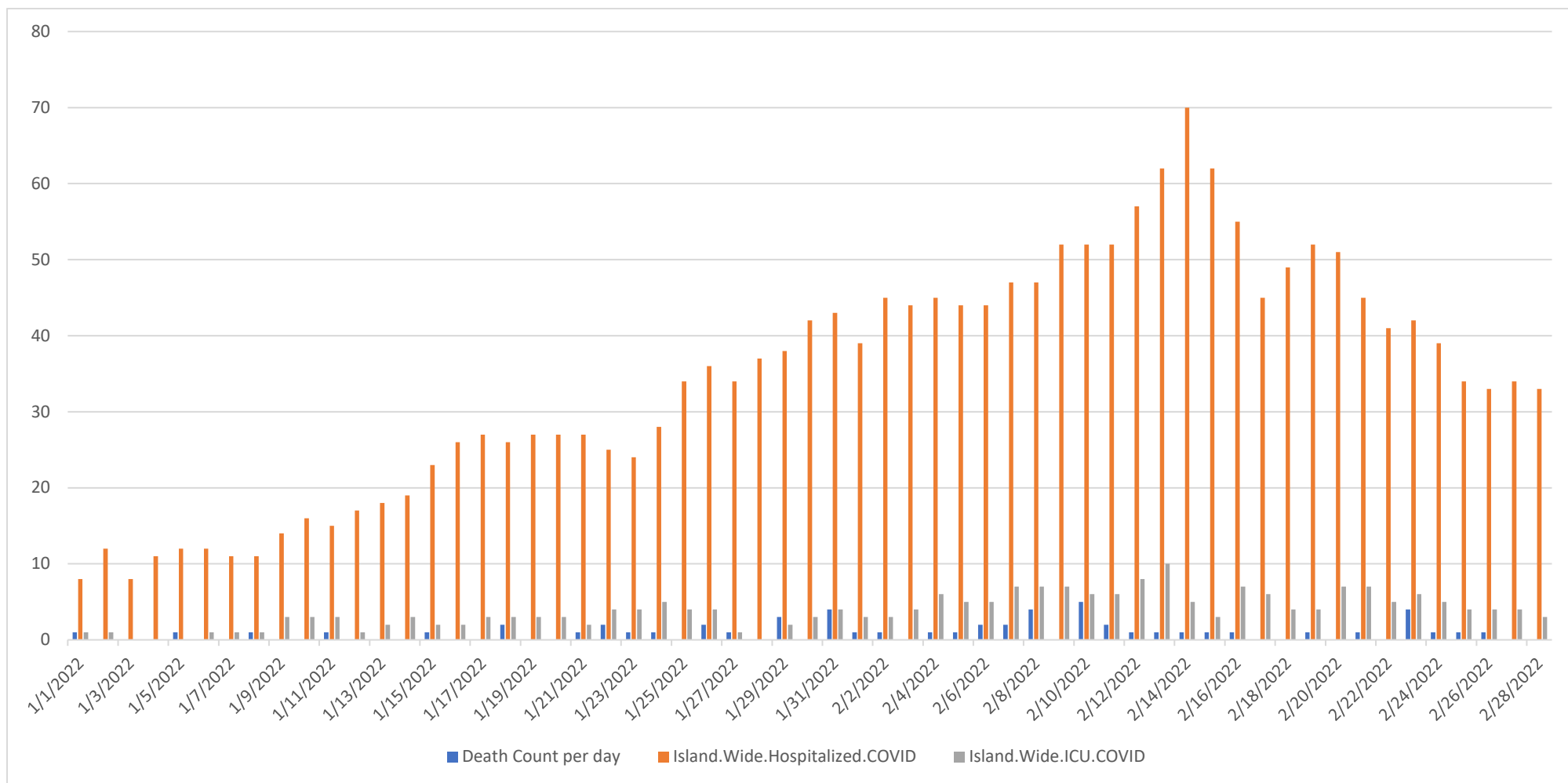
By the end of February there is a definitive decrease in testing, and the SDRA is about 1,000 tests conducted per day, with the test positivity rate at around 23%.



Declining case rates across all age groups.



The proportion of symptomatic cases is now averaging less than 40%.



The island-wide, daily hospitalized COVID-19 count has been declining since mid-February.

There is also decline in the island-wide COVID-19 ICU count. Deaths continue to appear sporadically.

Data on cases compiled by Vince Campo, CDC Foundation Surveillance Unit lead analyst.

For more information, contact the Territorial Epidemiologist: ann.pobutsky@dphss.guam.gov or (671) 888-9276 (WARN).