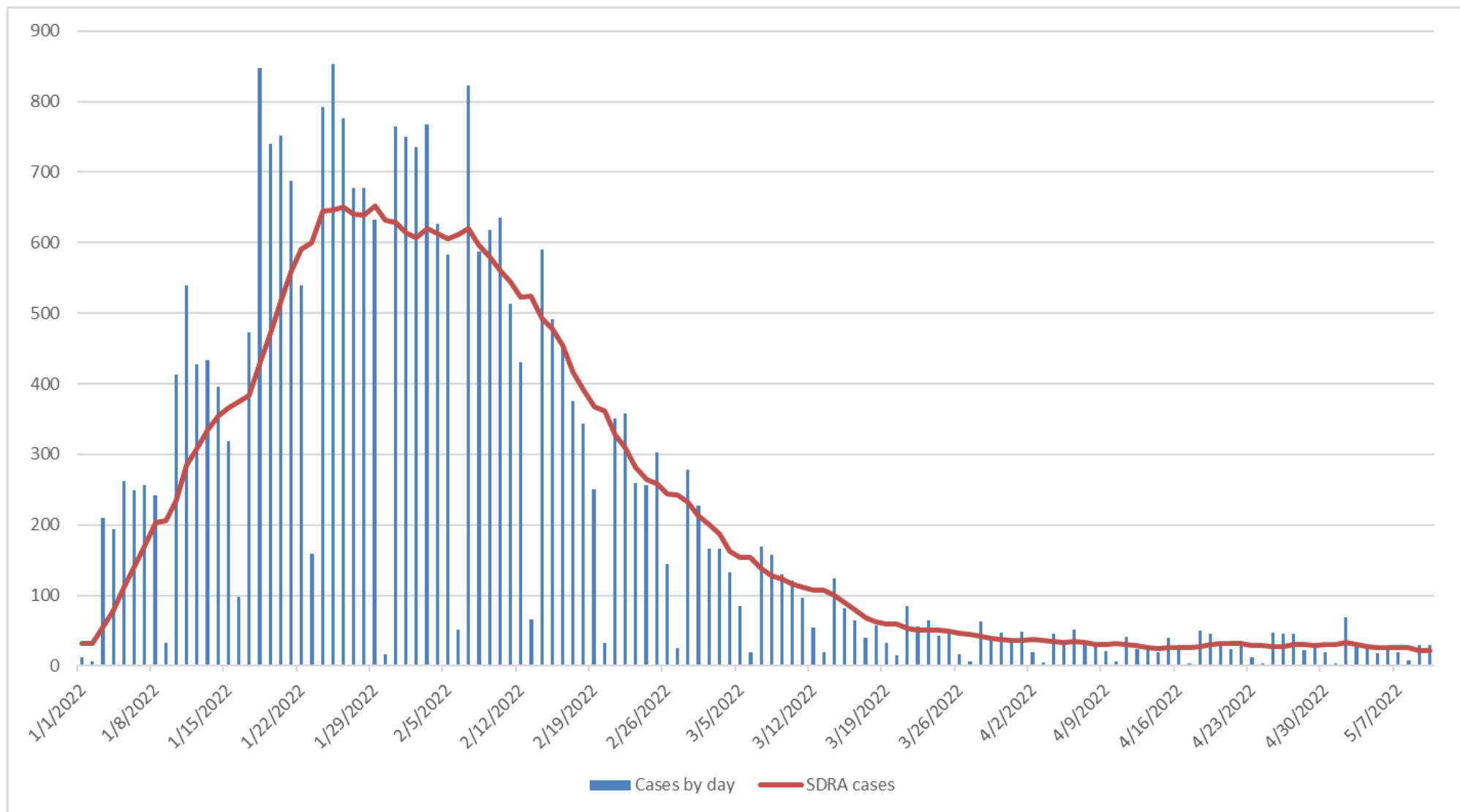




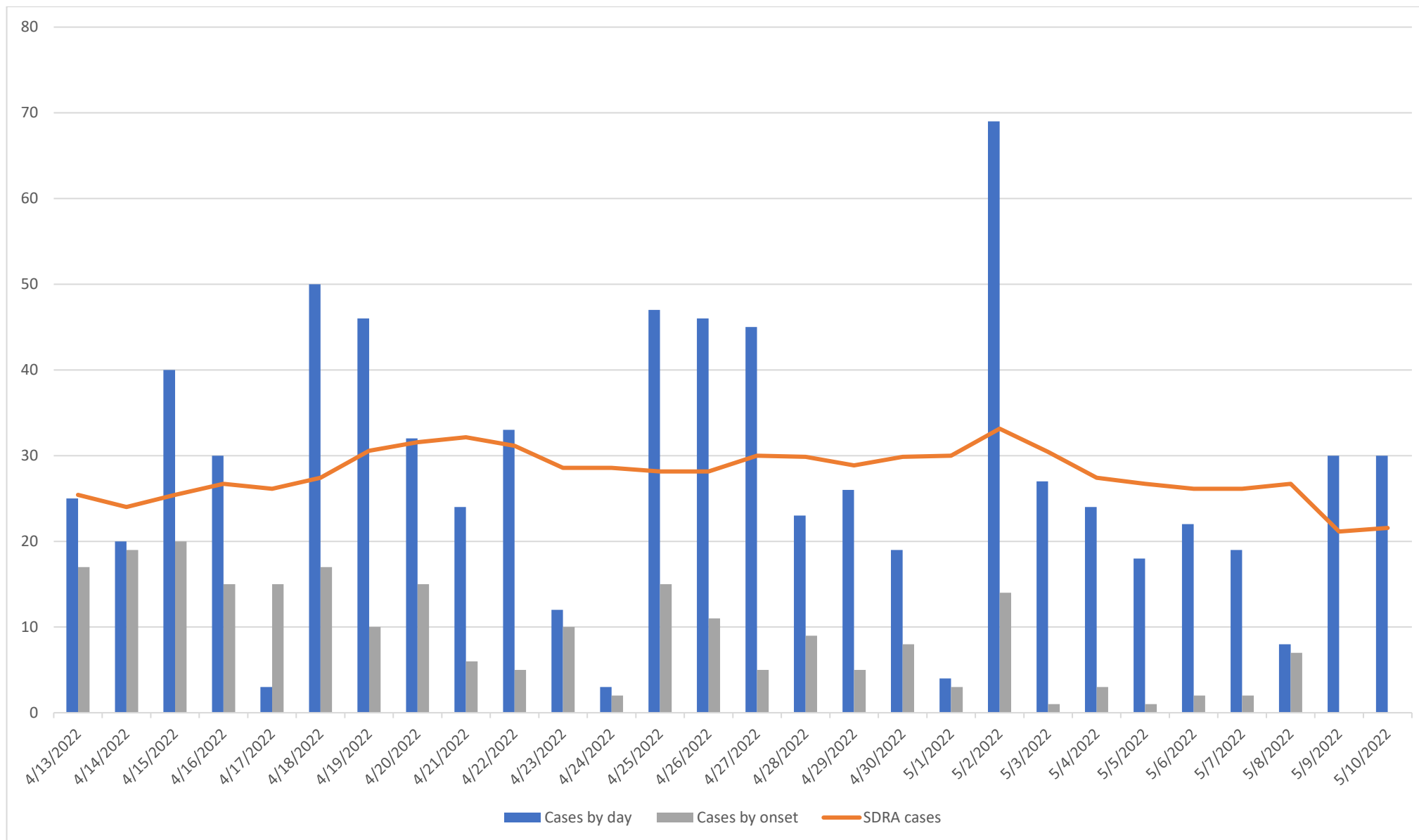
COVID-19 DATA/SURVEILLANCE UPDATE

**OFFICE OF EPIDEMIOLOGY AND RESEARCH & COVID-19 SURVEILLANCE UNIT
GUAM DEPARTMENT OF PUBLIC HEALTH AND SOCIAL SERVICES**

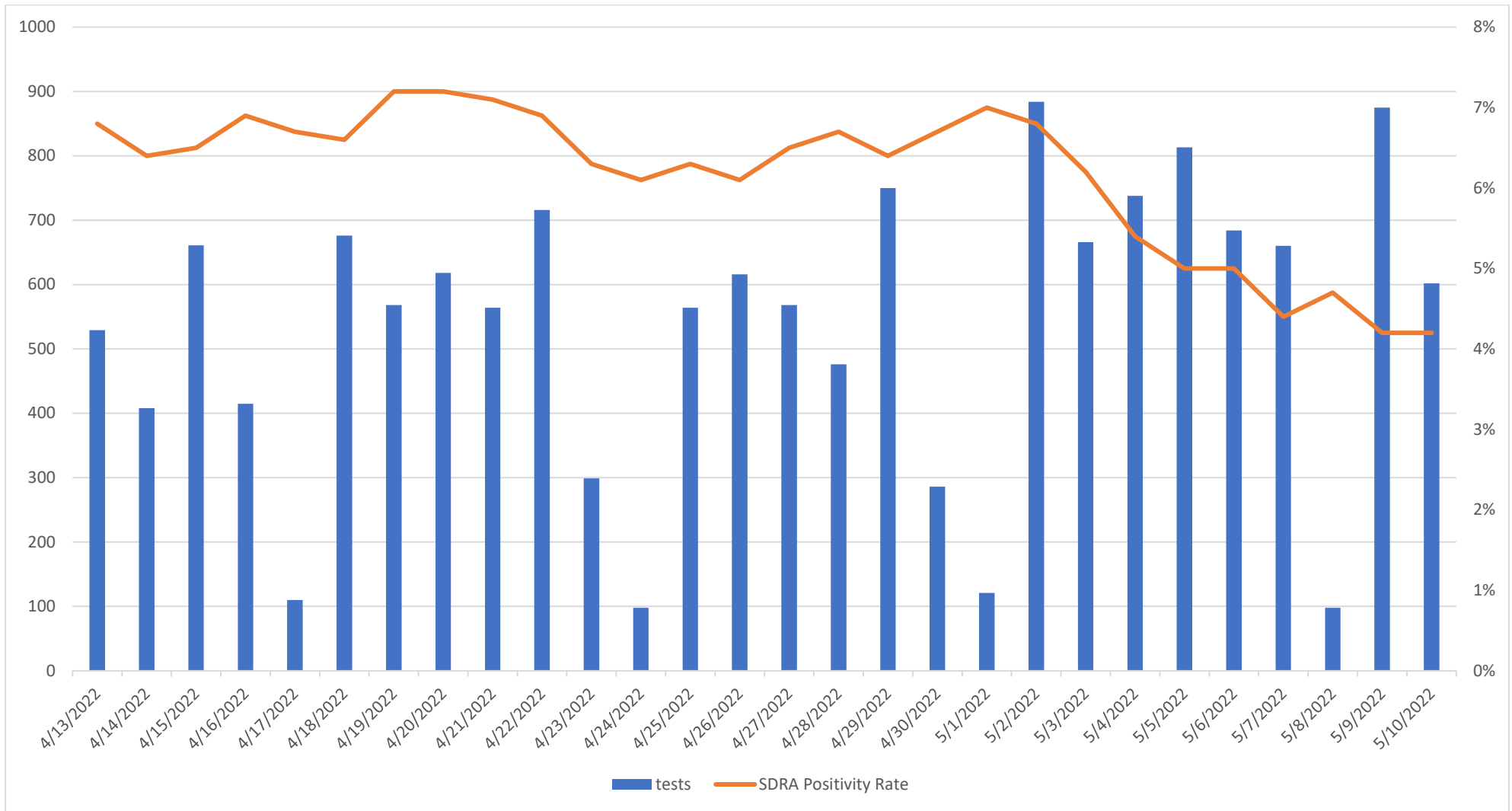
5/12/2022



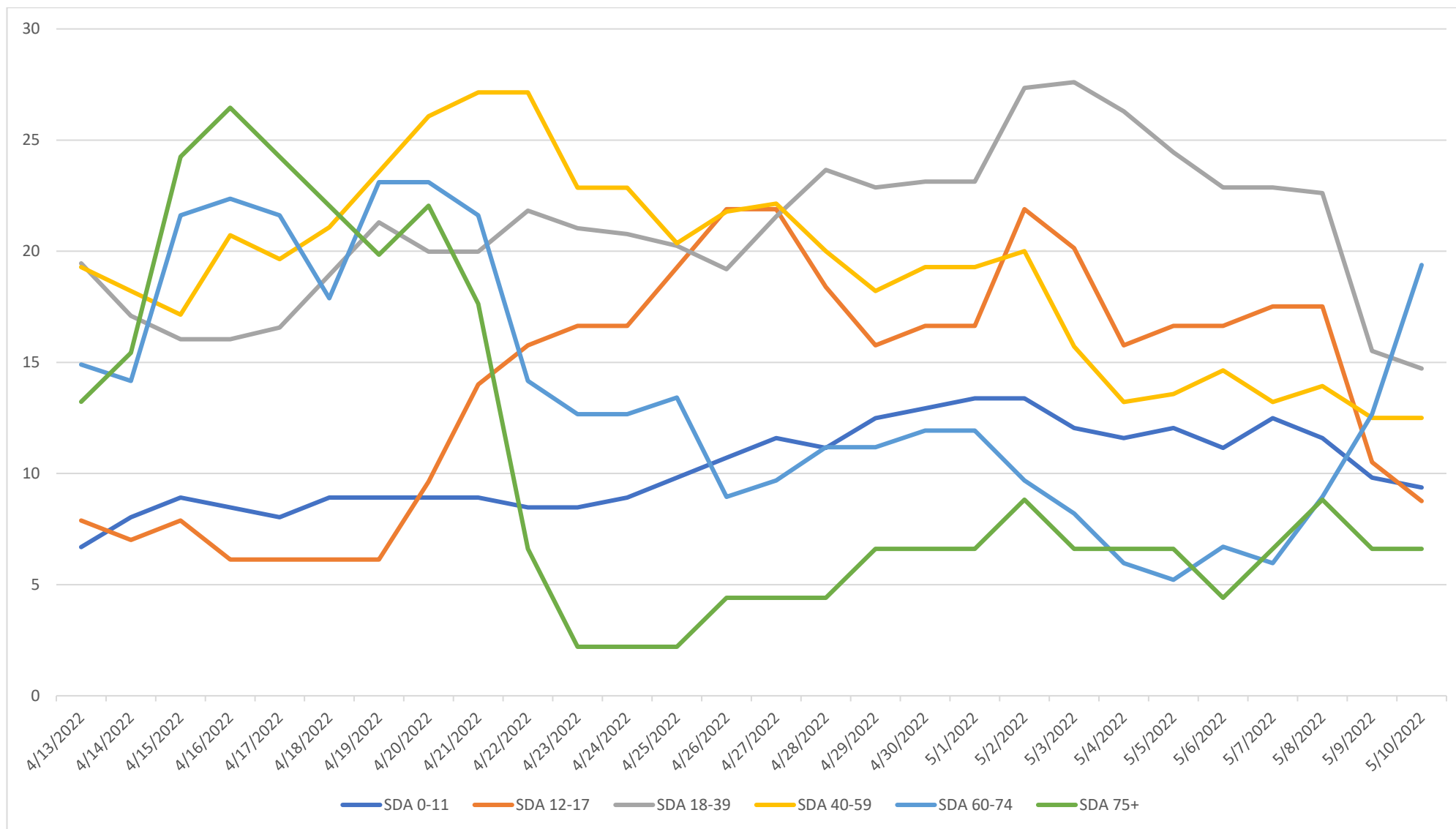
Overview: 2022 COVID-19 cases and SDRA – January 1 – May 10, 2022



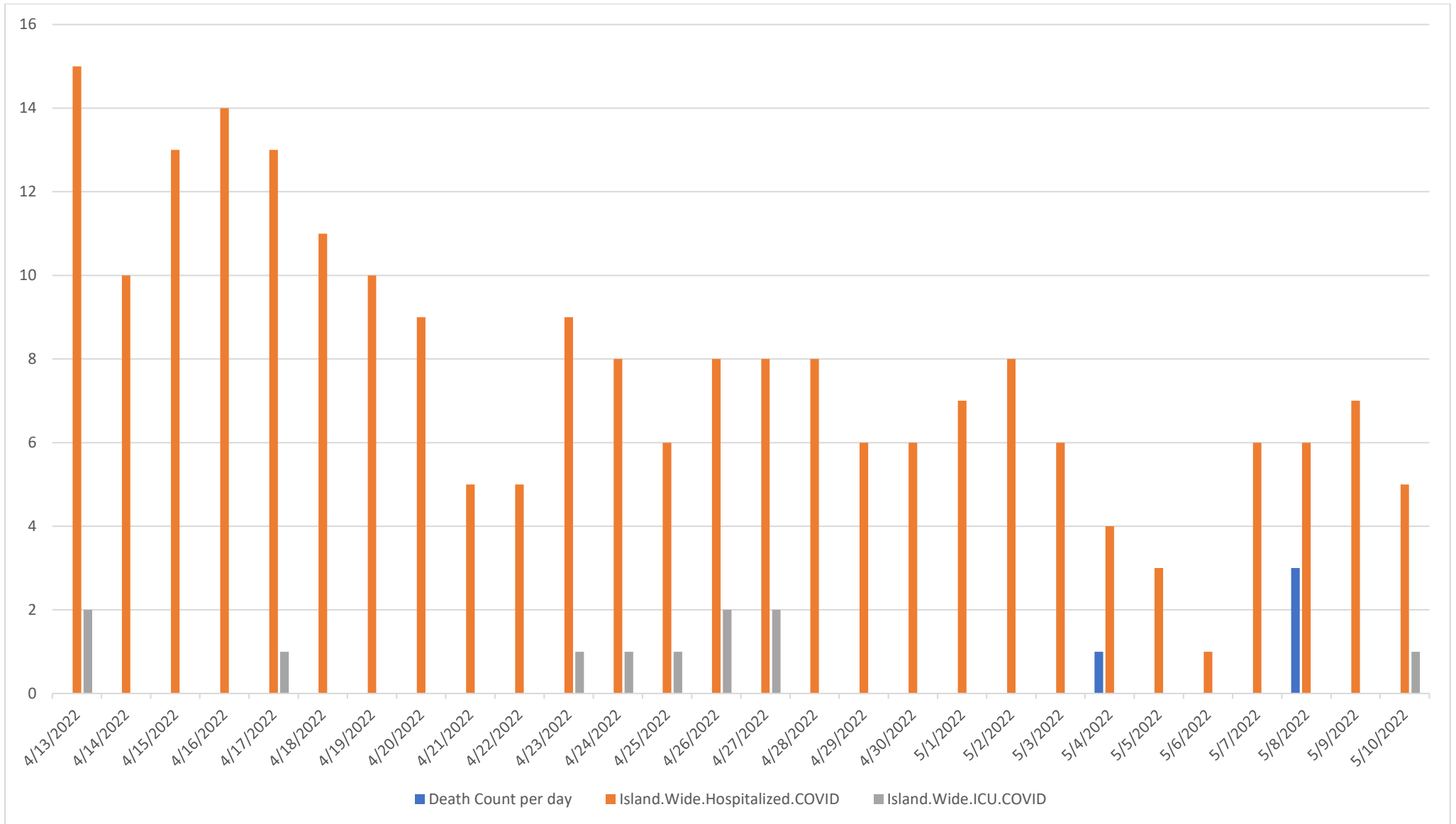
Past 28 days: The SDRA of cases is now less than 30 per day.



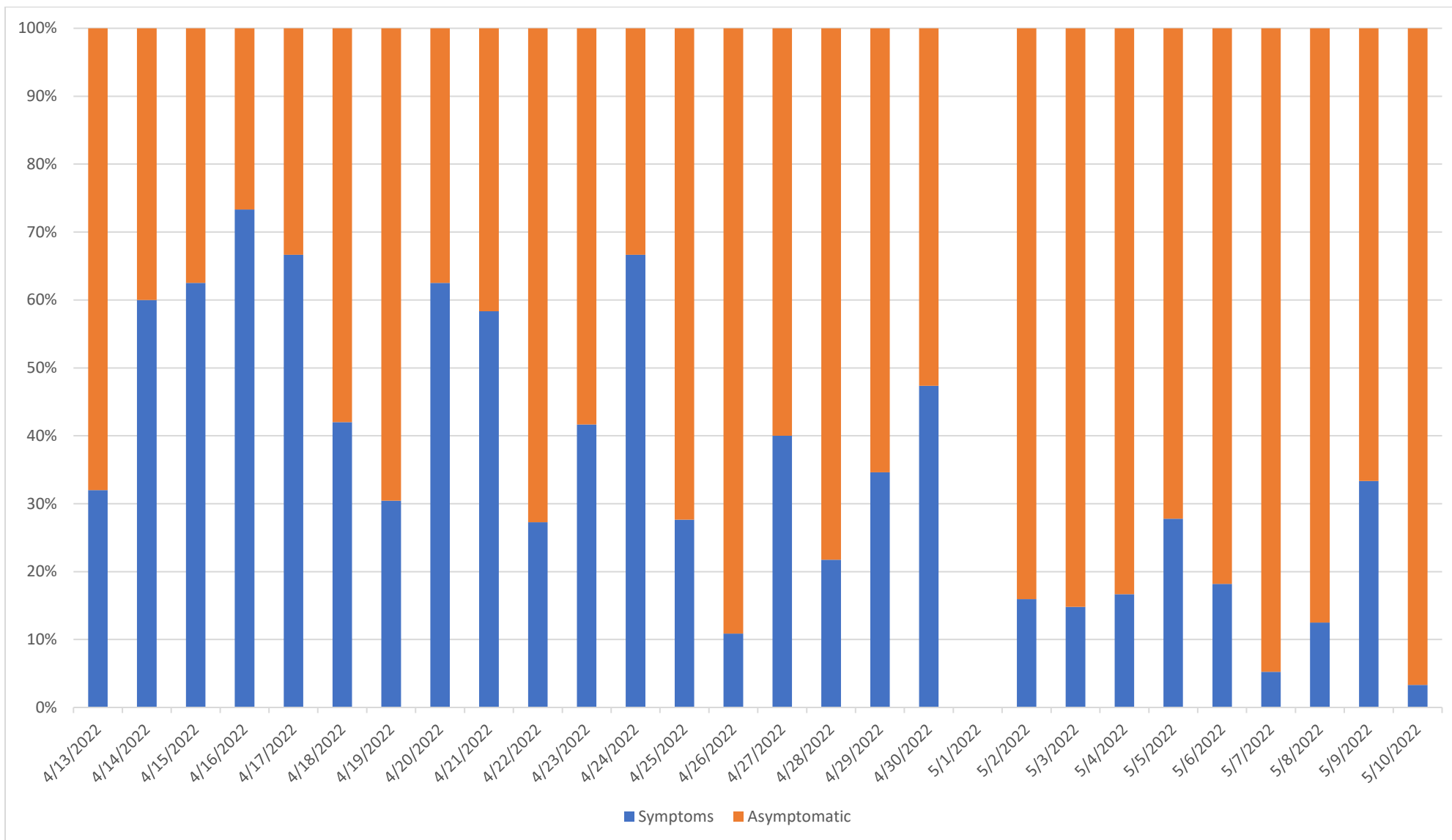
**The past 28 days: there is a continued decrease in testing,
with the SDRA test positivity rate now under 5%.**



Past 28 days: Continued declining case rates across all age groups, with convergence.



Past 28 days: The island-wide, daily COVID-19 hospitalized and ICU count continues to decline. Deaths are sporadic.



Past 28 days: Most cases are asymptomatic.

	All deaths	All deaths DOA	DOA as a proportion of all deaths	5 year DOA average 2015-2019
GUAM				
2015	1009	316	31.3	30.7
2016	1021	322	31.5	
2017	1035	293	28.3	
2018	1056	336	31.8	
2019	1007	309	30.7	
2020	1193	405	33.9	
2021	1278	403	31.5	
	COVID-19 deaths	COVID-19 deaths DOA	COVID-19 DOA as a proportion of all deaths	
GUAM				
2020	126	23	18.3	
2021	148	55	37.2	
2022	81	36	44.4	
TOTAL	355	114	32.1	

Summary to date: Guam normally sees a lot of people who die “dead on arrival” (DOA), since a lot of people die at home on Guam. The average for the past 5 years prior to the SARS-CoV-2/COVID-19 pandemic was 30.7%.

However, the proportion of COVID-19 related deaths that were DOA was much higher (37.2%) during the Delta (2021) and Omicron (44.4%) variant surges of the COVID-19 pandemic.

Thanks to Cameron Murphy (working at DPHSS-OVS on an MCH project) for data entry on dead on arrival codes from death certificates for the past 5 years prior to COVID-19. Thanks also to Cynthia Naval (retired DPHSS biostatistician) for compiling the Guam Top 10 causes of death for 2020 and 2021 (data for 2021 is still preliminary).

Data on cases compiled by Vince Campo, CDC Foundation Surveillance Unit lead analyst. For more information, contact the Territorial Epidemiologist: ann.pobutsky@dphss.guam.gov or (671) 888-9276 (WARN).