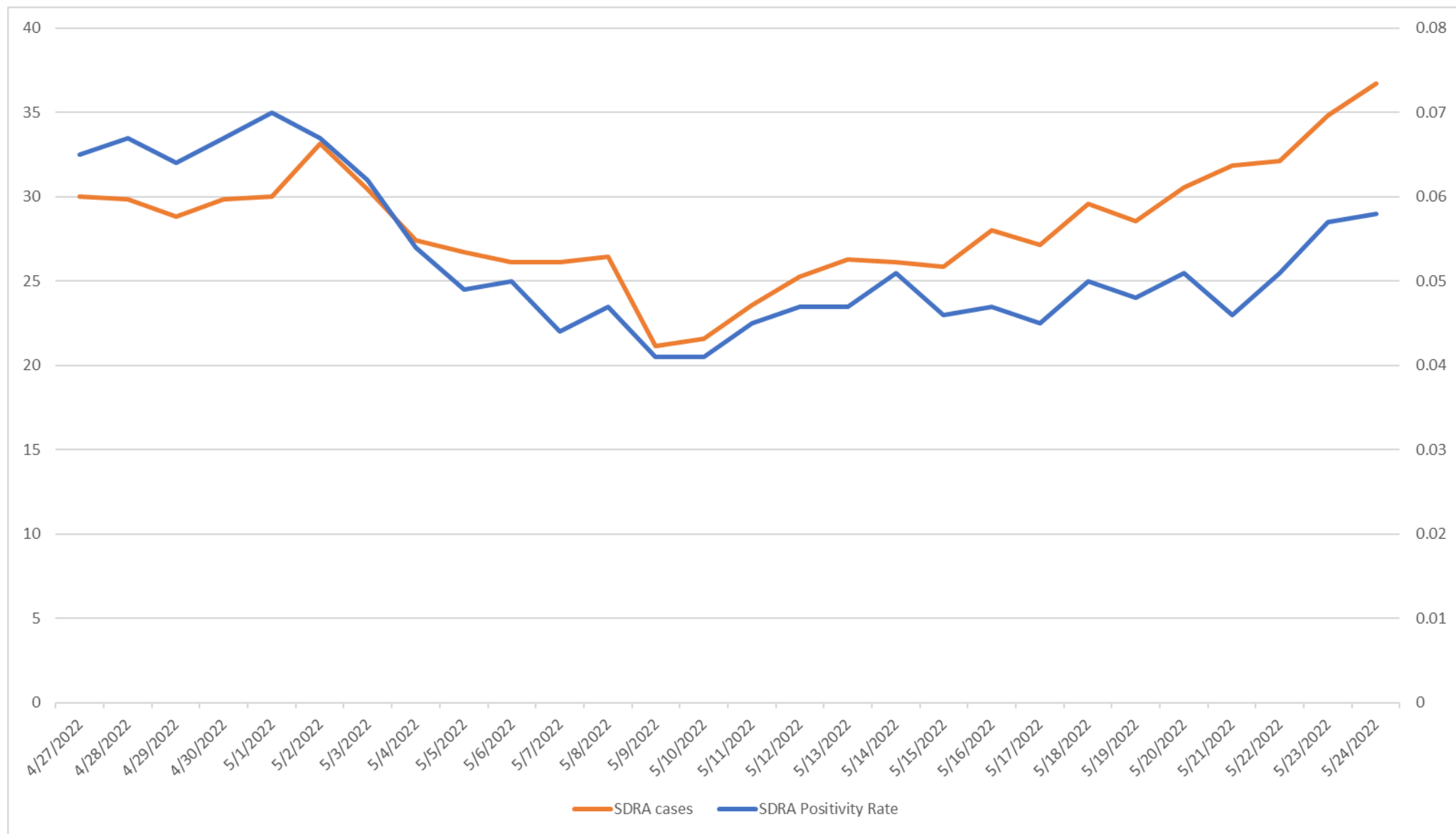




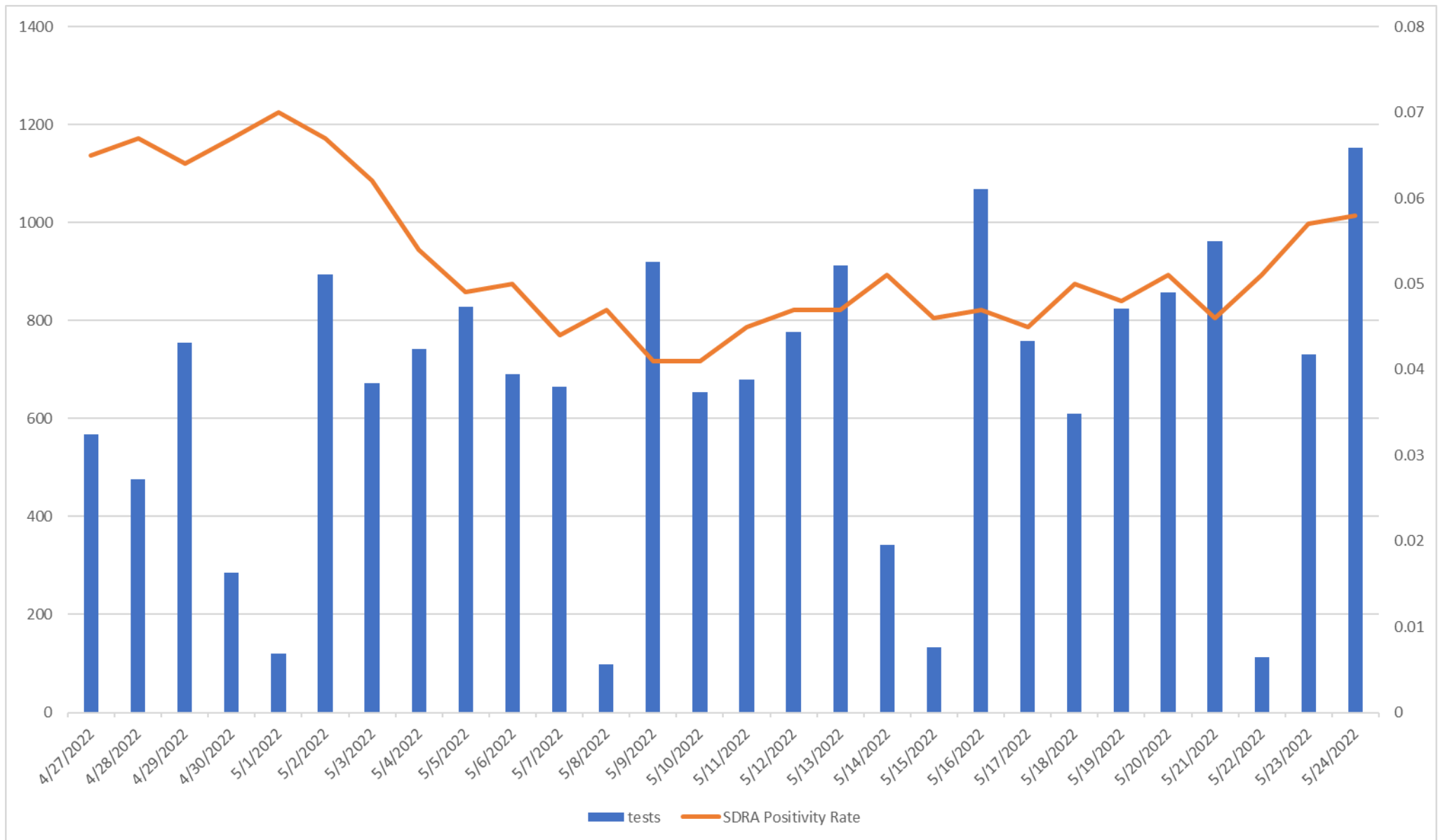
COVID-19 DATA/SURVEILLANCE UPDATE

**OFFICE OF EPIDEMIOLOGY AND RESEARCH & COVID-19 SURVEILLANCE UNIT
GUAM DEPARTMENT OF PUBLIC HEALTH AND SOCIAL SERVICES**

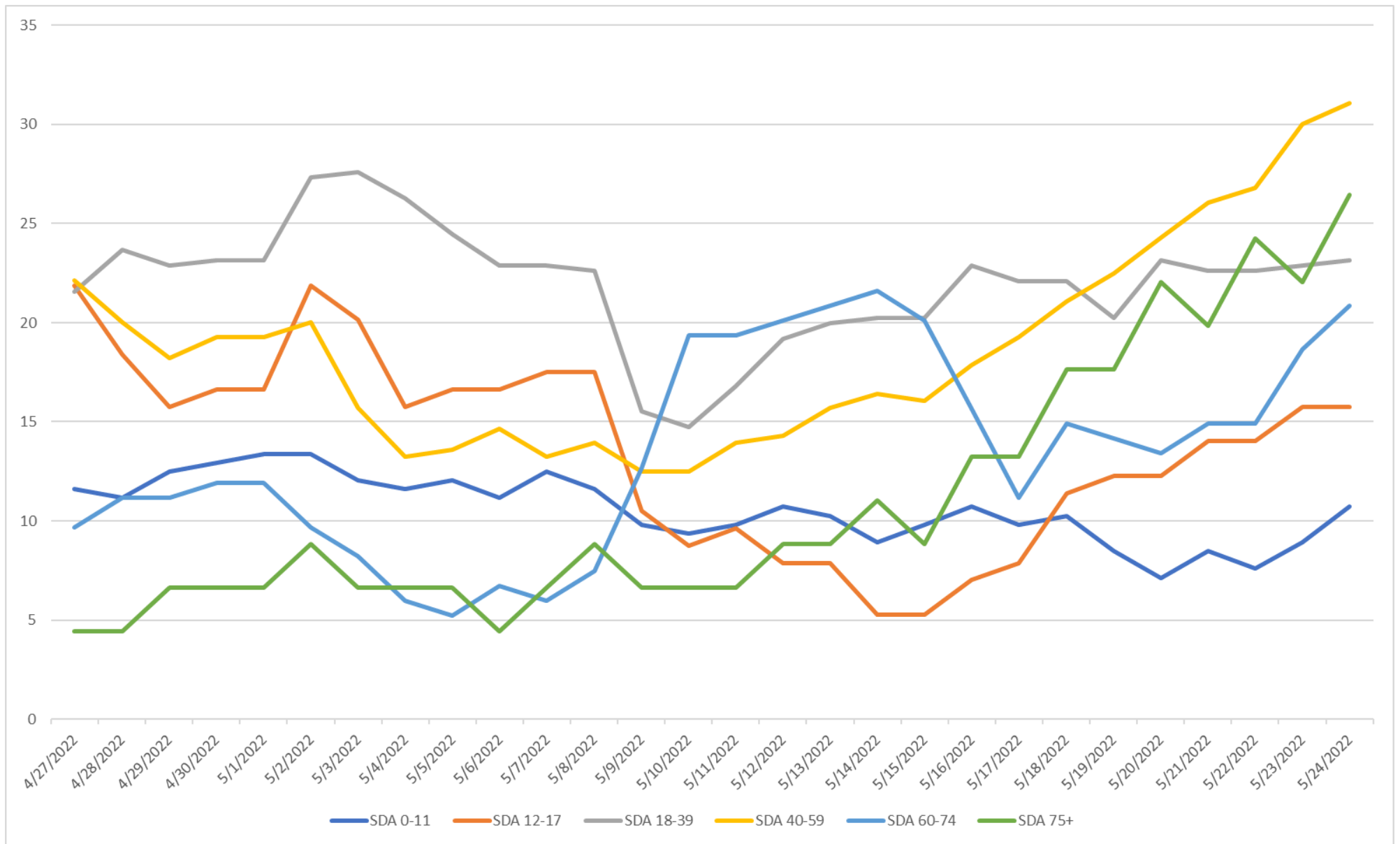
5/26/2022



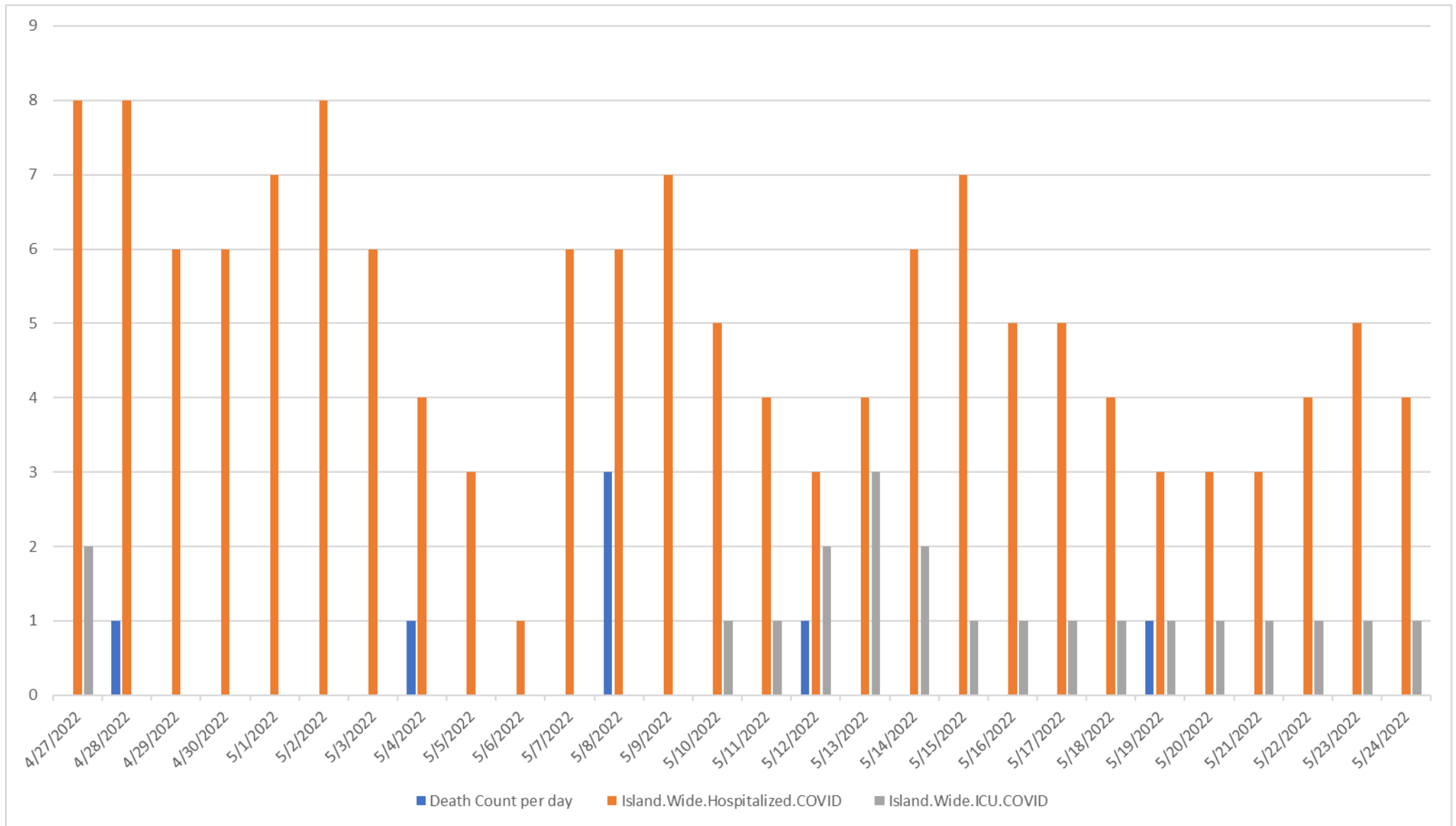
The SDRA of cases has gone above 30 cases per day since mid-May and the SDRA positivity rate is now close to 6%.



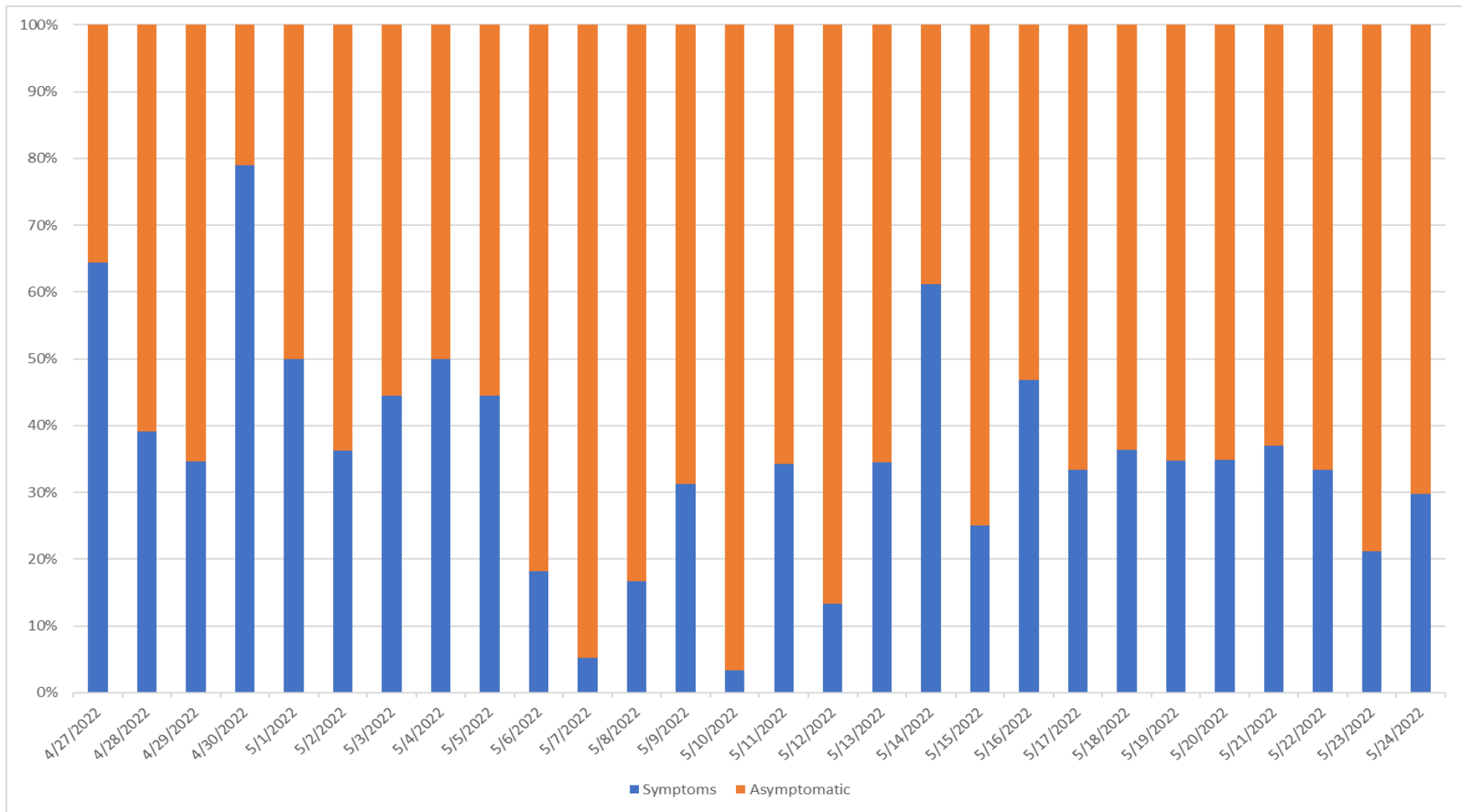
There has also been a recent slight increase in testing in the past week.



All age groups show an increase since mid-May, with the biggest increases among teens, and those > 40 years of age.

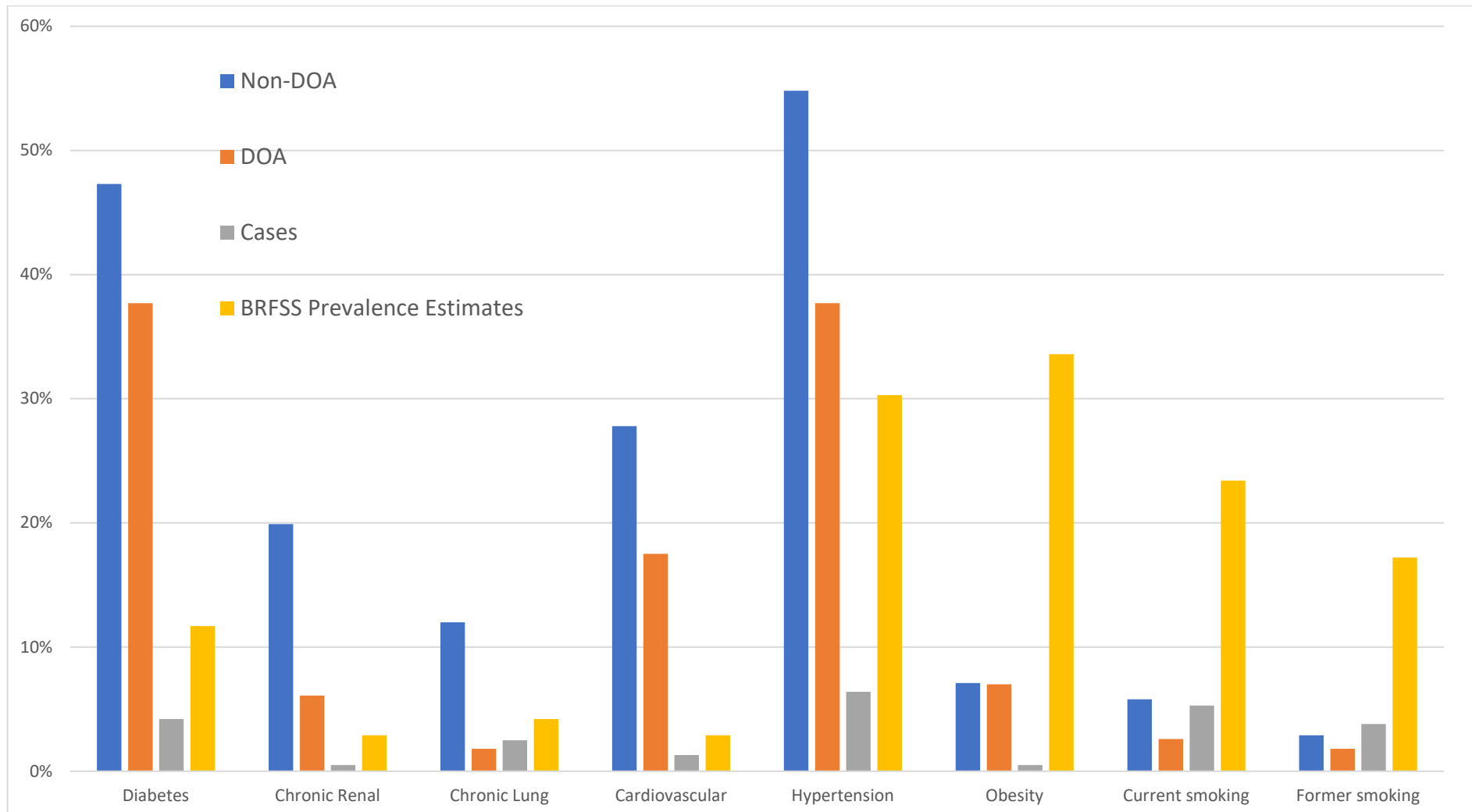


The island-wide, daily COVID-19 hospitalized and ICU count show no significant change. Deaths continue to be sporadic.



Past 28 days: Most cases continue to be asymptomatic.

Data on cases compiled by Vince Campo, CDC Foundation Surveillance Unit lead analyst.



Data on COVID-19 related deaths (including DOAs) from March 22, 2020 to May 4, 2022 show a consistent pattern related to co-morbidities of diabetes, hypertension, ESRD, cardiovascular disease and chronic lung disease (compared to COVID-19 cases and BRFSS population estimates for chronic diseases).

For more information, contact the Territorial Epidemiologist: ann.pobutsky@dphss.guam.gov or (671) 888-9276 (WARN).