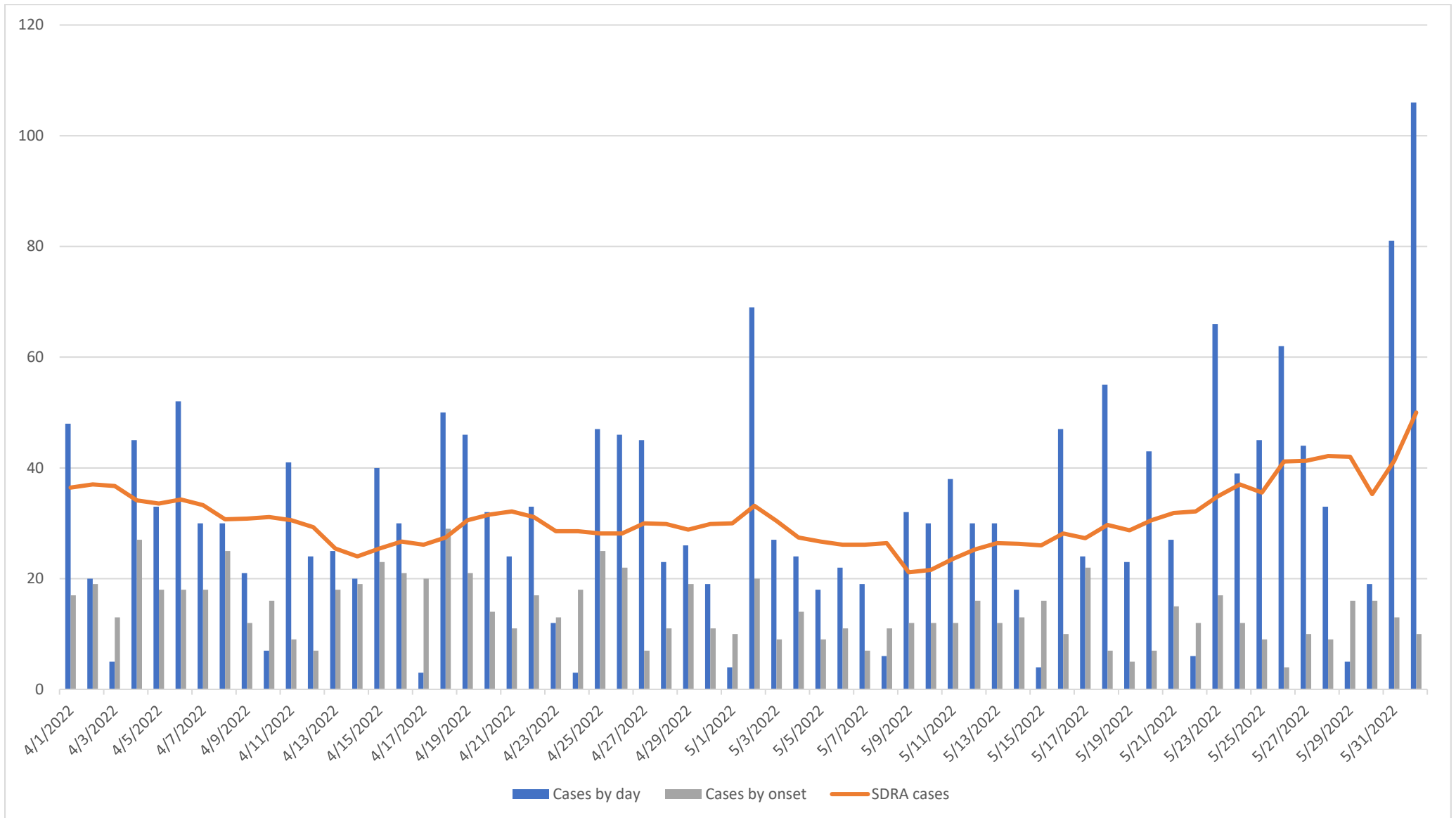




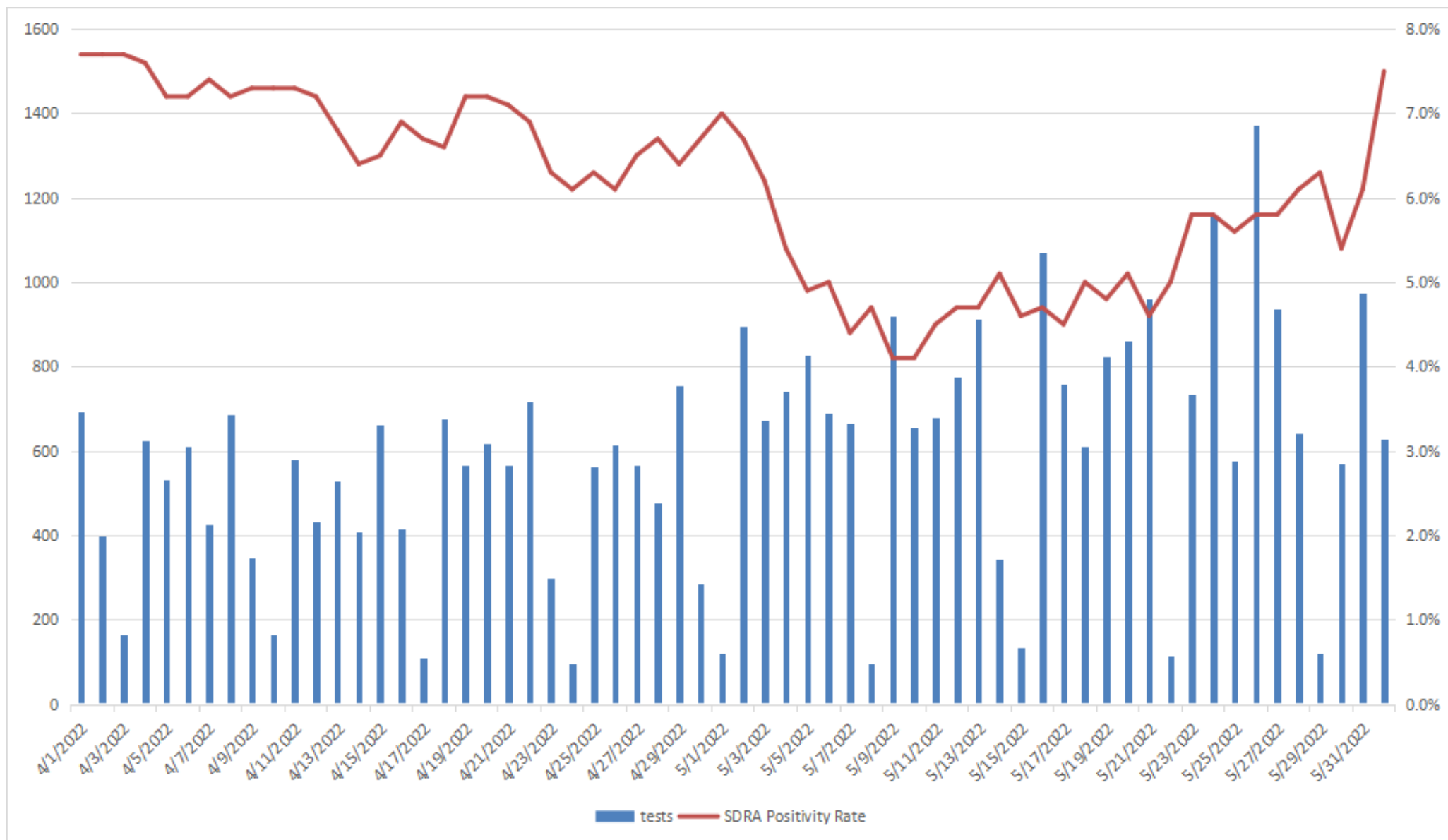
**COVID-19 DATA/SURVEILLANCE UPDATE: April 1 – June 1, 2022**

**OFFICE OF EPIDEMIOLOGY AND RESEARCH & COVID-19 SURVEILLANCE UNIT  
GUAM DEPARTMENT OF PUBLIC HEALTH AND SOCIAL SERVICES**

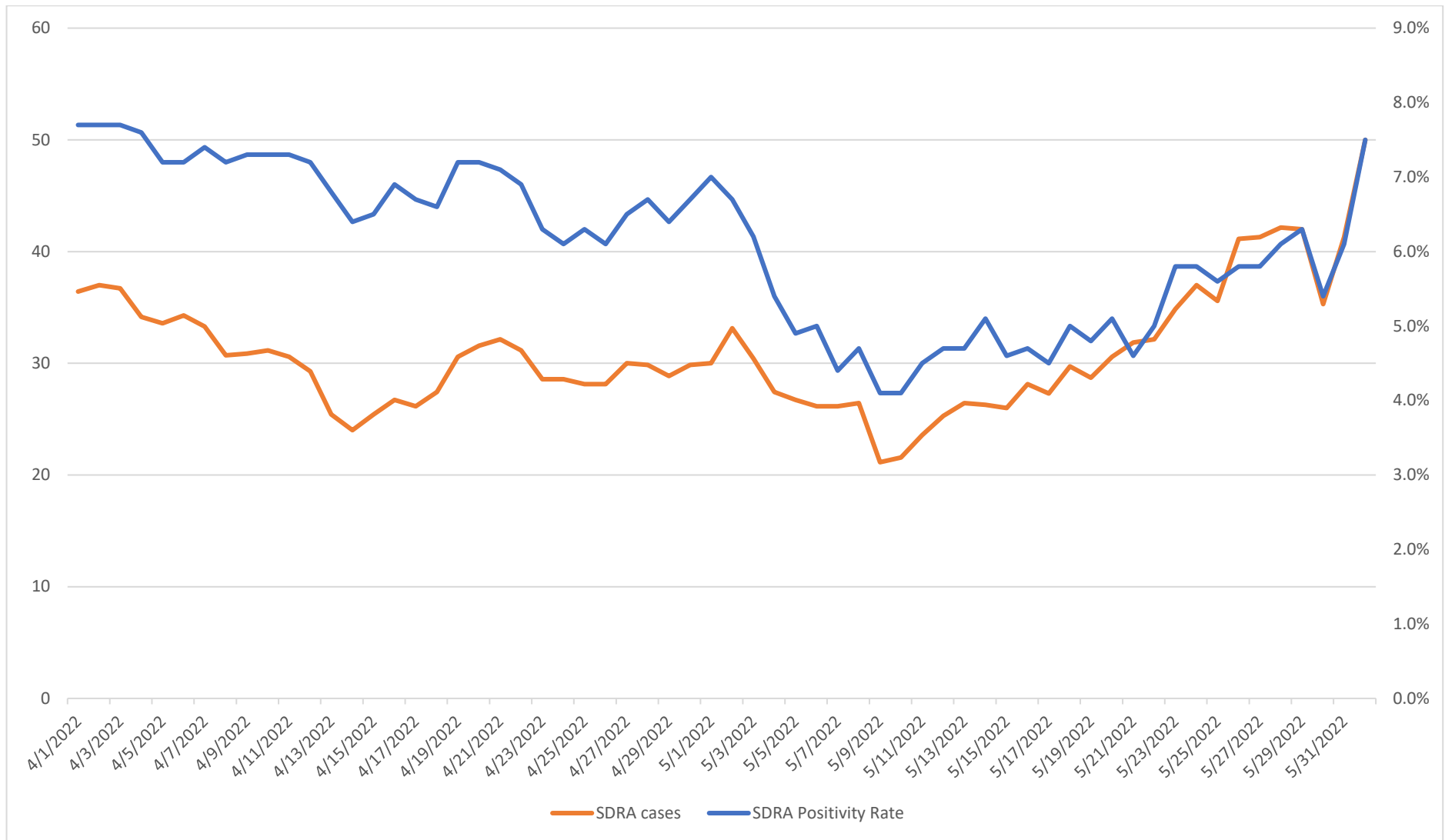
**6/3/2022**



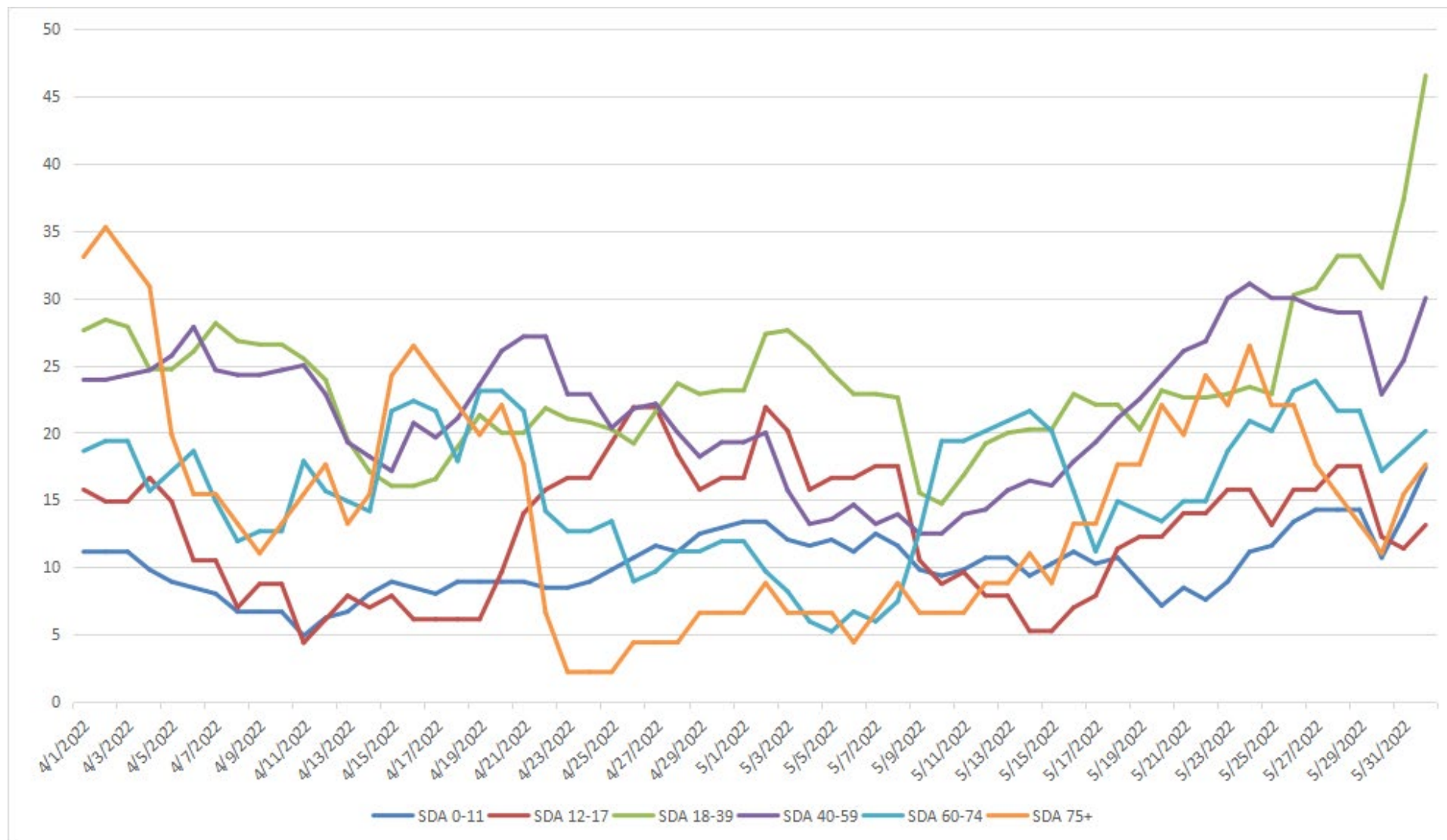
**The SDRA of cases has recently gone above 40 cases per day and the SDRA positivity rate is now at 7.5%.**



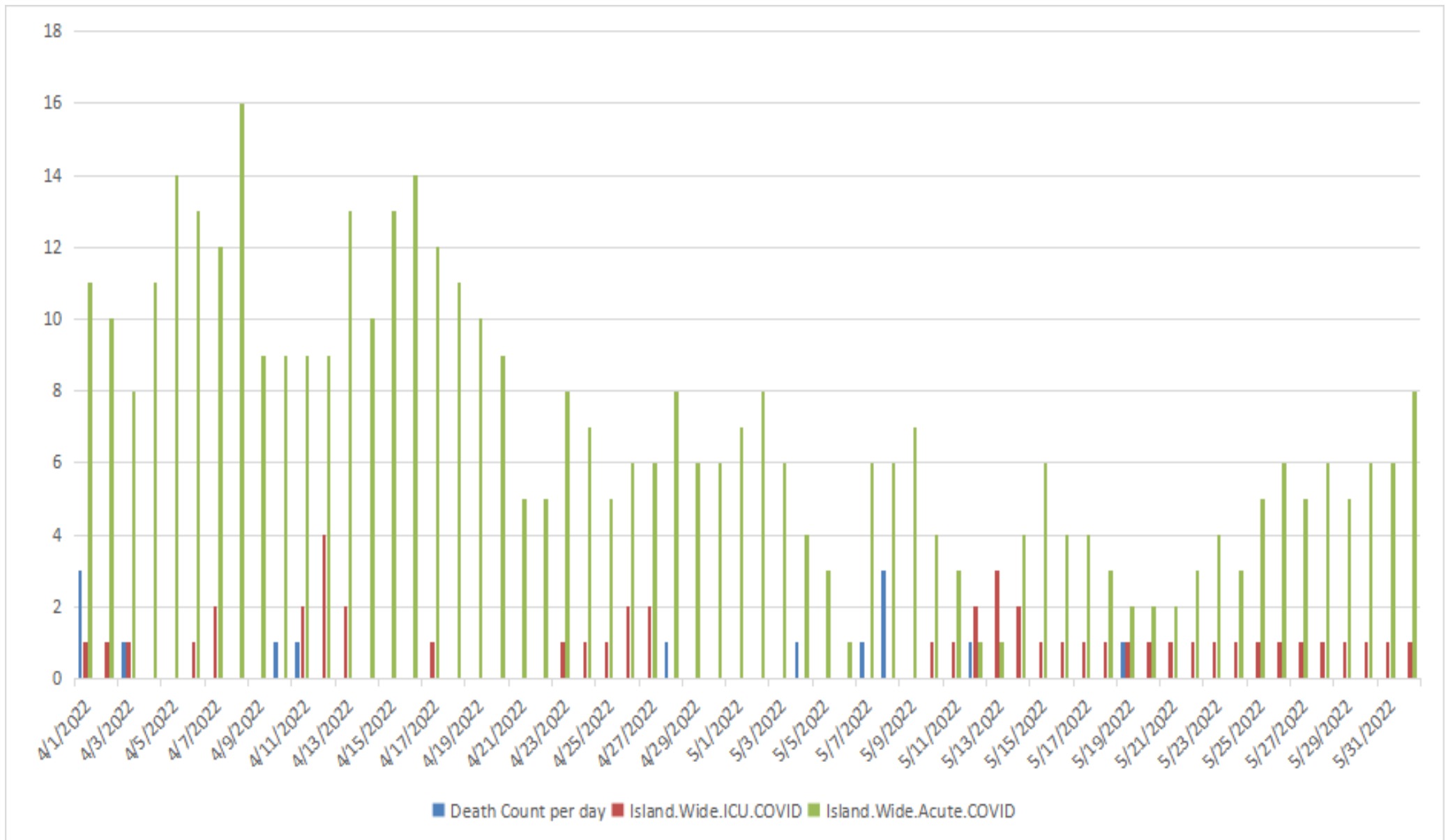
**There has also been a recent slight increase in testing in the past week.**



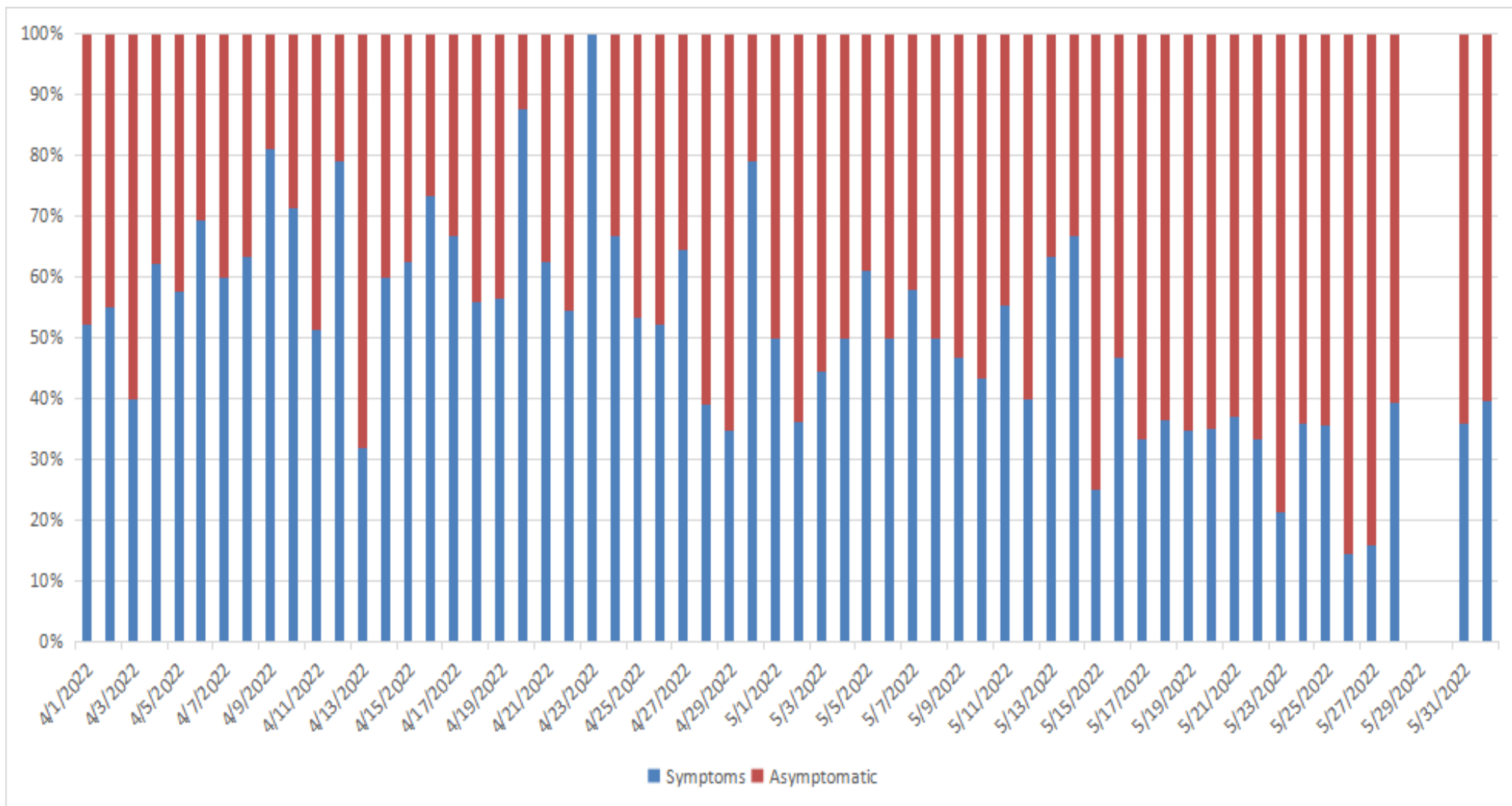
**The SDRA of cases and the SDRA positivity rate show convergence.**



**Most recently there is an uptick in those aged 18-39.**



**The island-wide, daily COVID-19 hospitalized and ICU count show no significant change. Deaths continue to be sporadic.**



**Past 28 days: Most cases continue to be asymptomatic.**

Data on cases compiled by Vince Campo, CDC Foundation Surveillance Unit lead analyst.

For more information, contact the Territorial Epidemiologist: [ann.pobutsky@dphss.guam.gov](mailto:ann.pobutsky@dphss.guam.gov) or (671) 888-9276 (WARN).