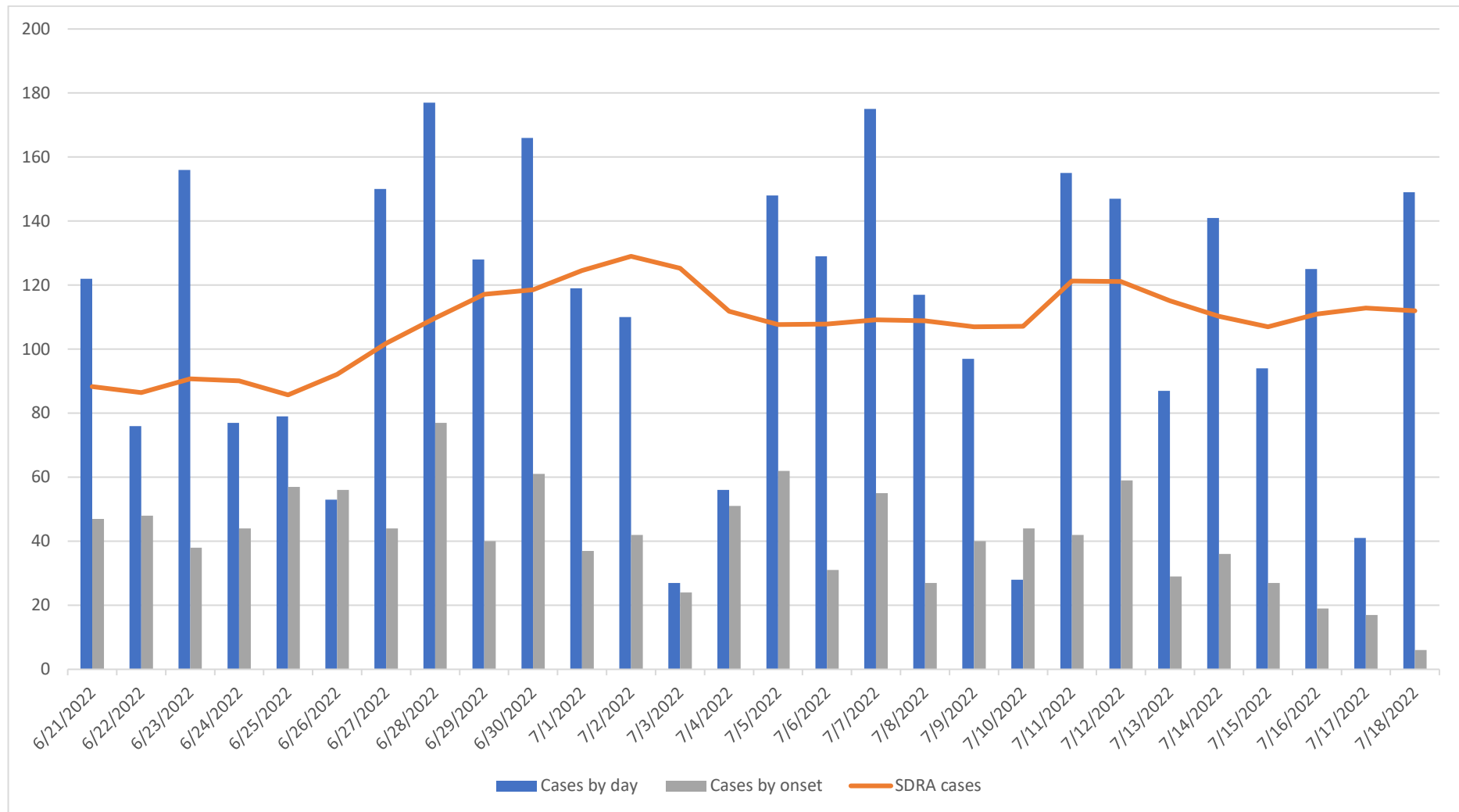




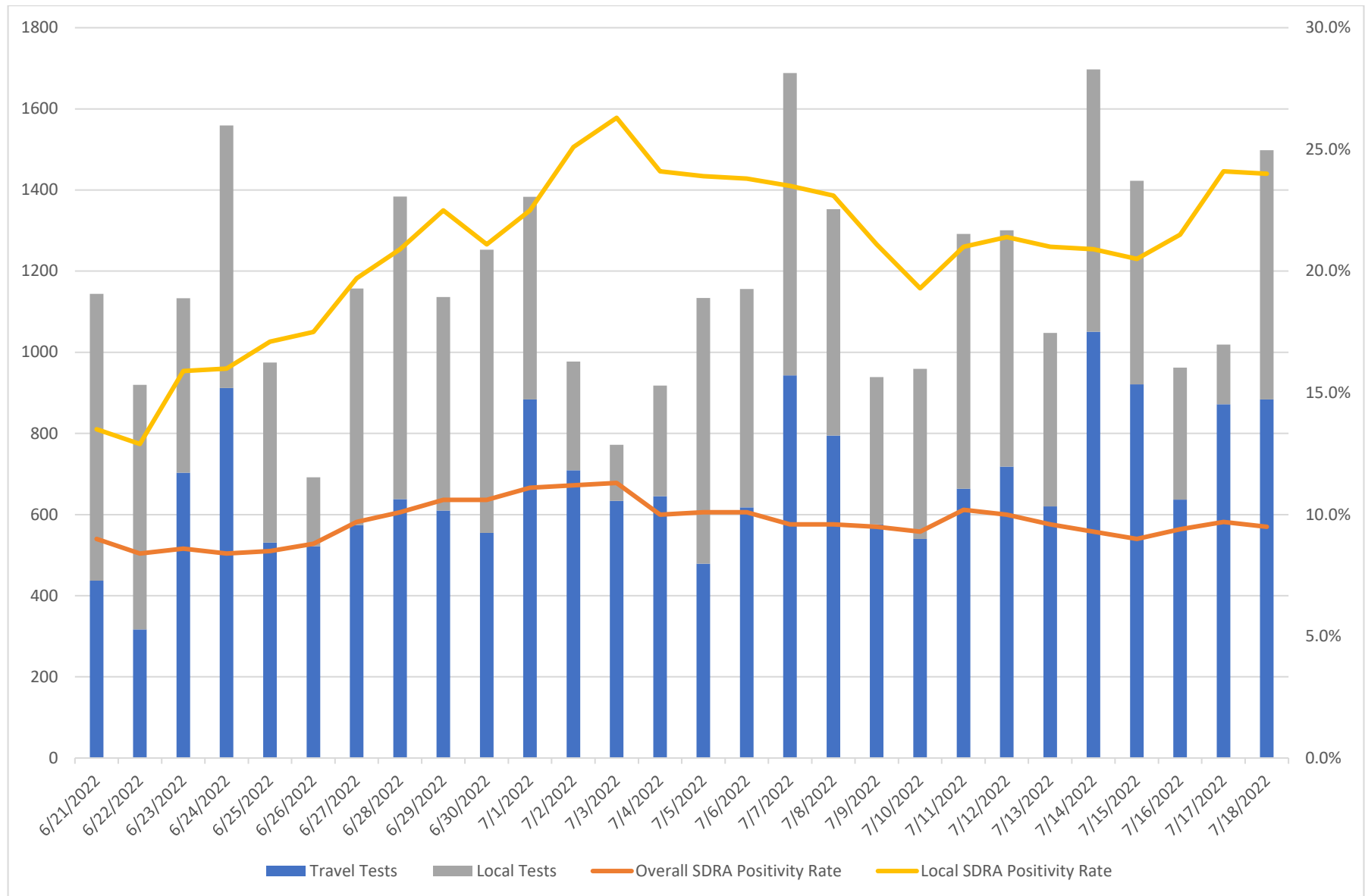
**COVID-19 DATA/SURVEILLANCE UPDATE: June 21-July 18, 2022
and
PANDEMIC SURGE INDICATORS**

**OFFICE OF EPIDEMIOLOGY AND RESEARCH & COVID-19 SURVEILLANCE UNIT
GUAM DEPARTMENT OF PUBLIC HEALTH AND SOCIAL SERVICES**

7/20/2022

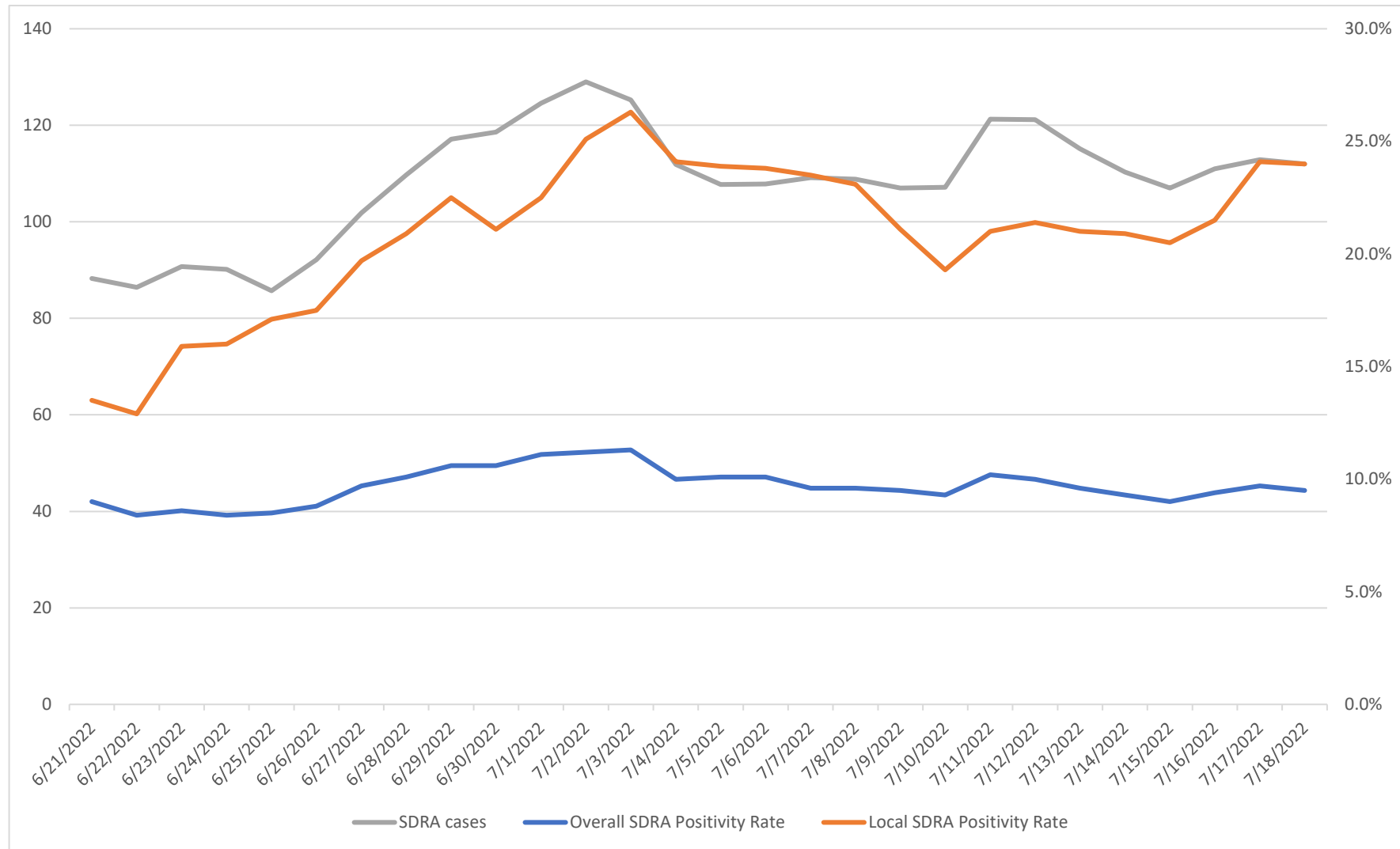


The SDRA of cases for the past 3 weeks, continues to be over 100 cases per day.

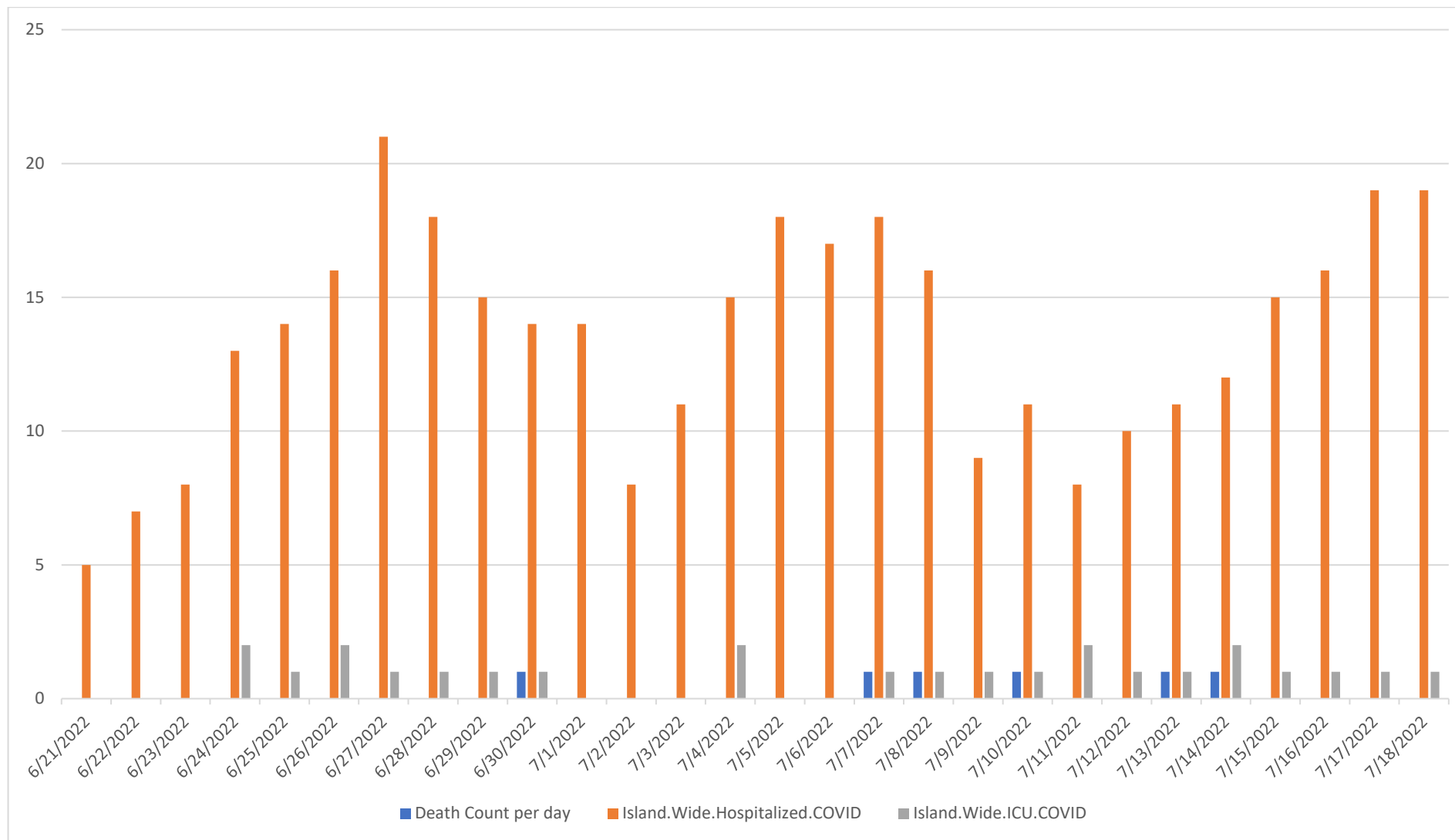


Note travelers testing began on June 13, 2022 and this can be observed in the increase in tests in blue with “local tests” in grey.

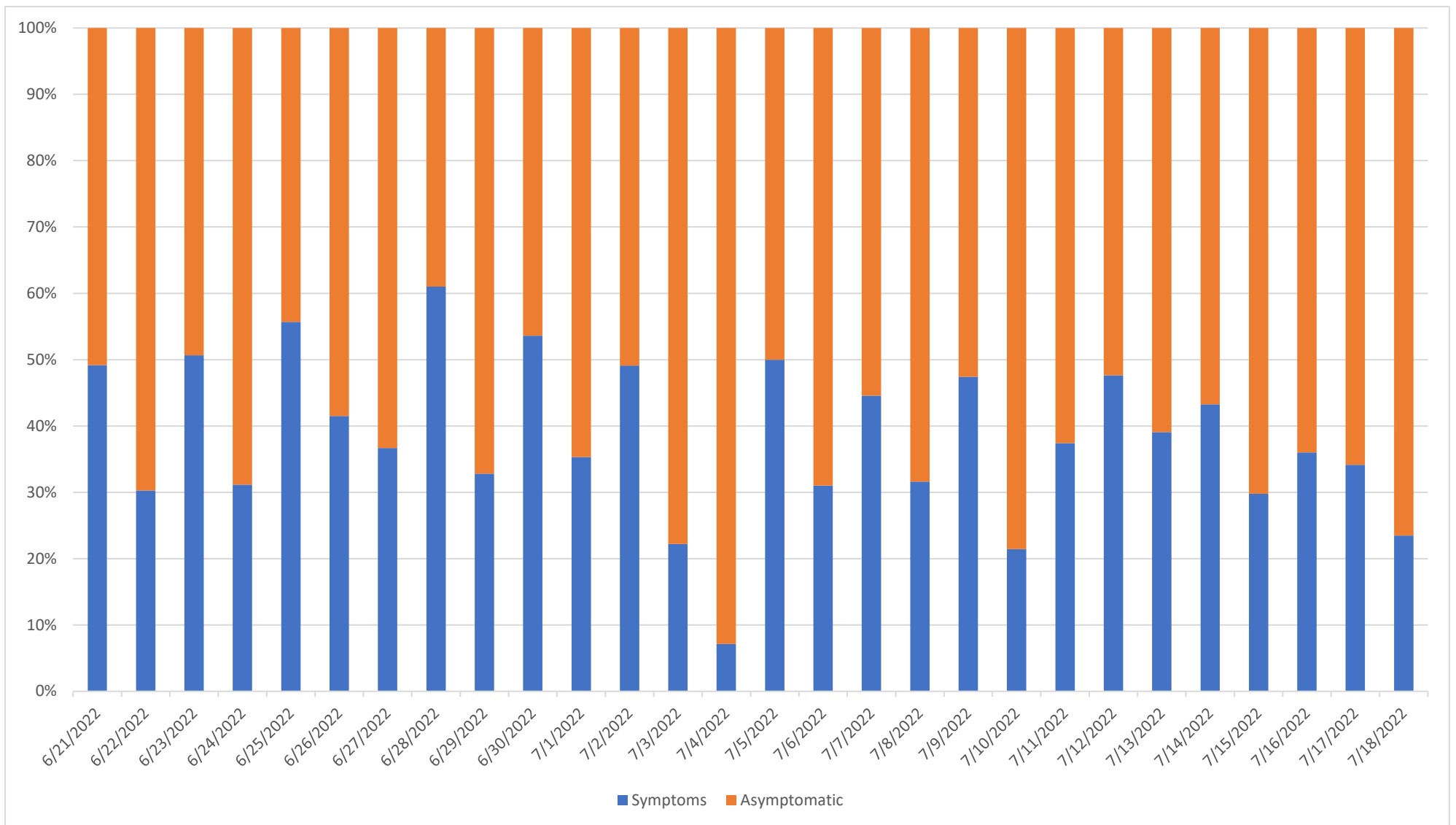
The local positivity rate is much higher (>25%) than the overall positivity rate (about 10%).



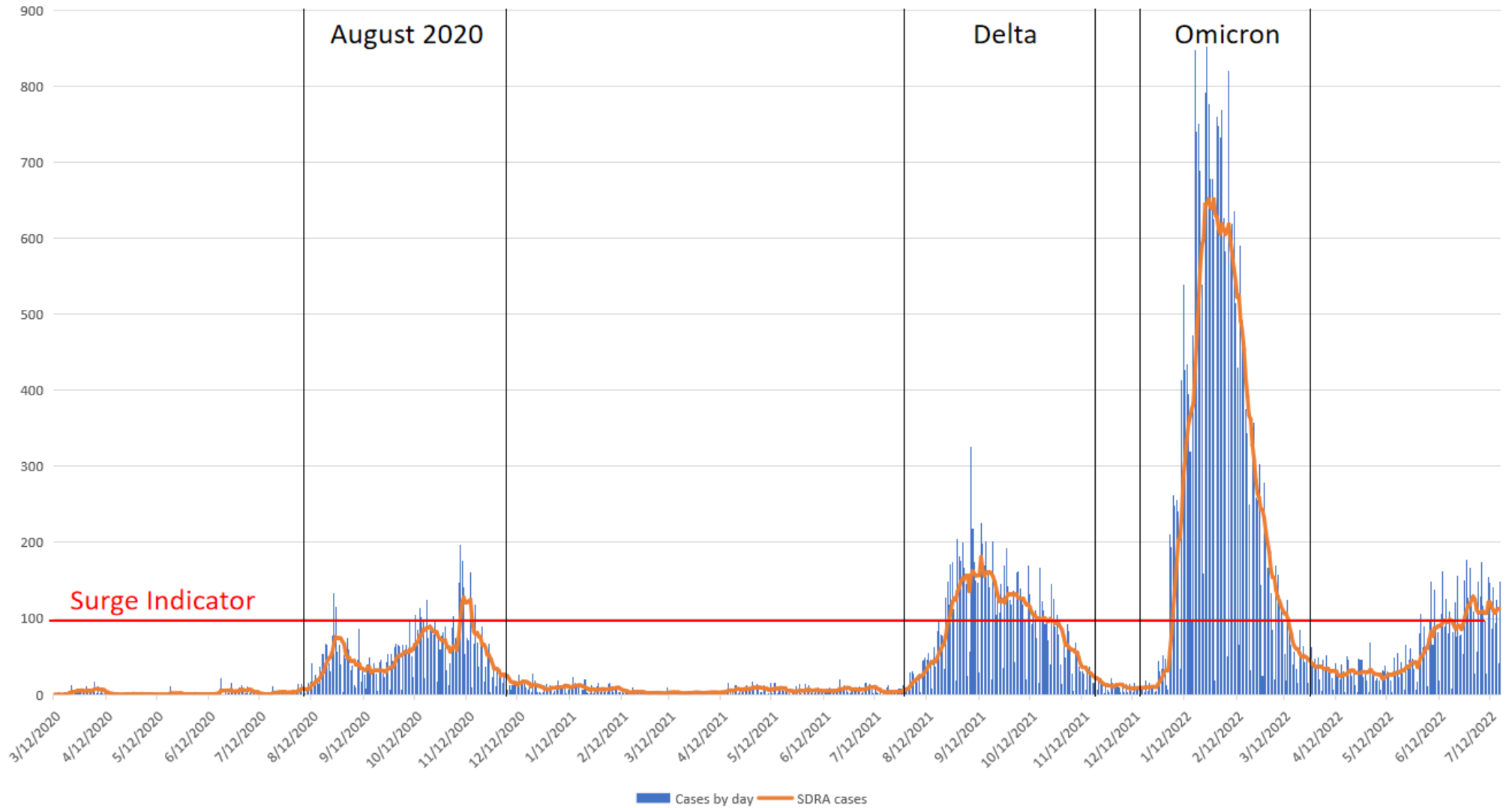
It is important to point out that local residents are also going to travelers testing sites, so the true local community positivity rate cannot be differentiated by “residents” versus “non-residents”, regardless of travel status.

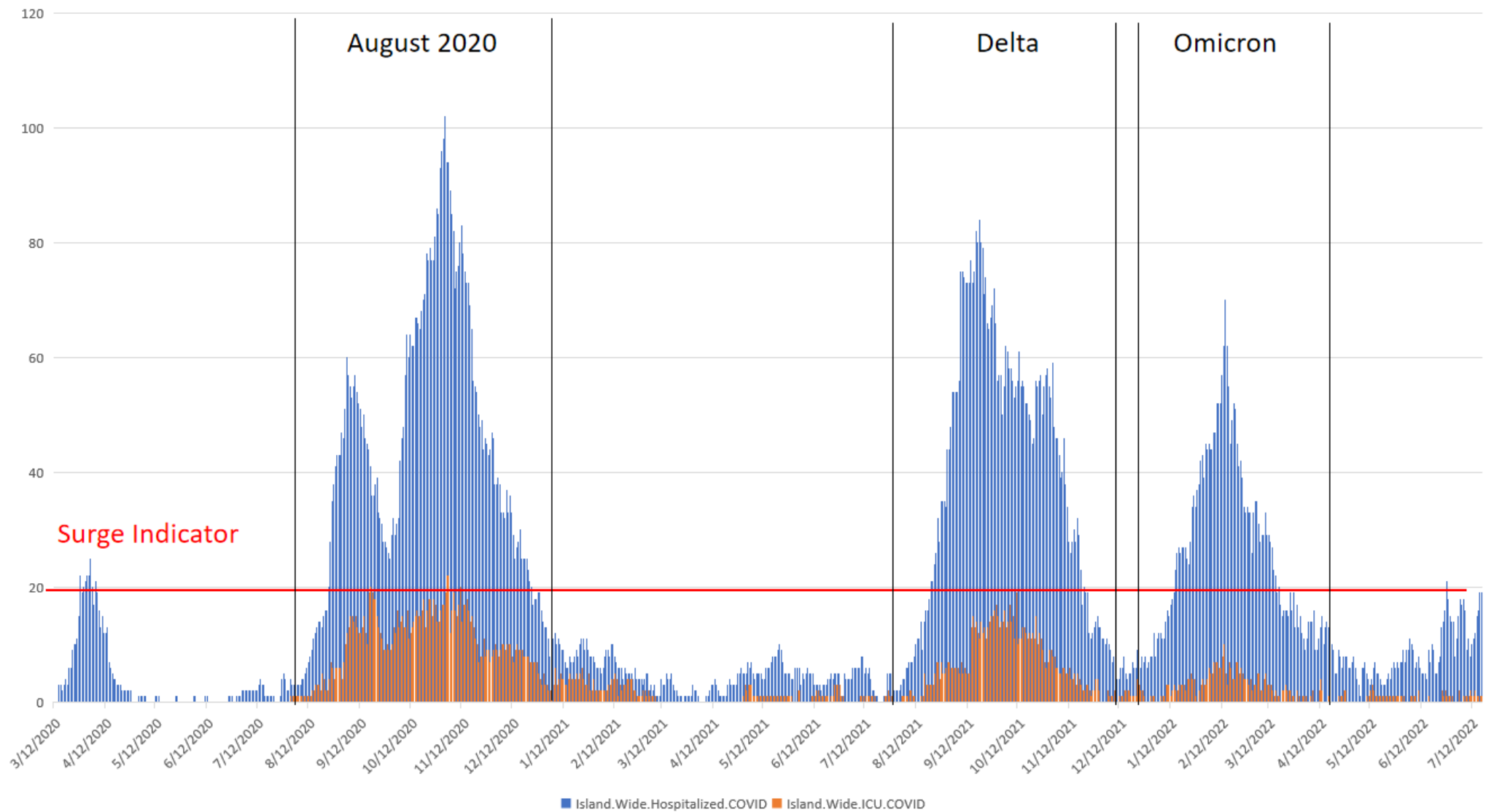


The island-wide, daily COVID-19 hospitalized count has recently increased, yet the ICU count shows no significant change and deaths continue to be sporadic.

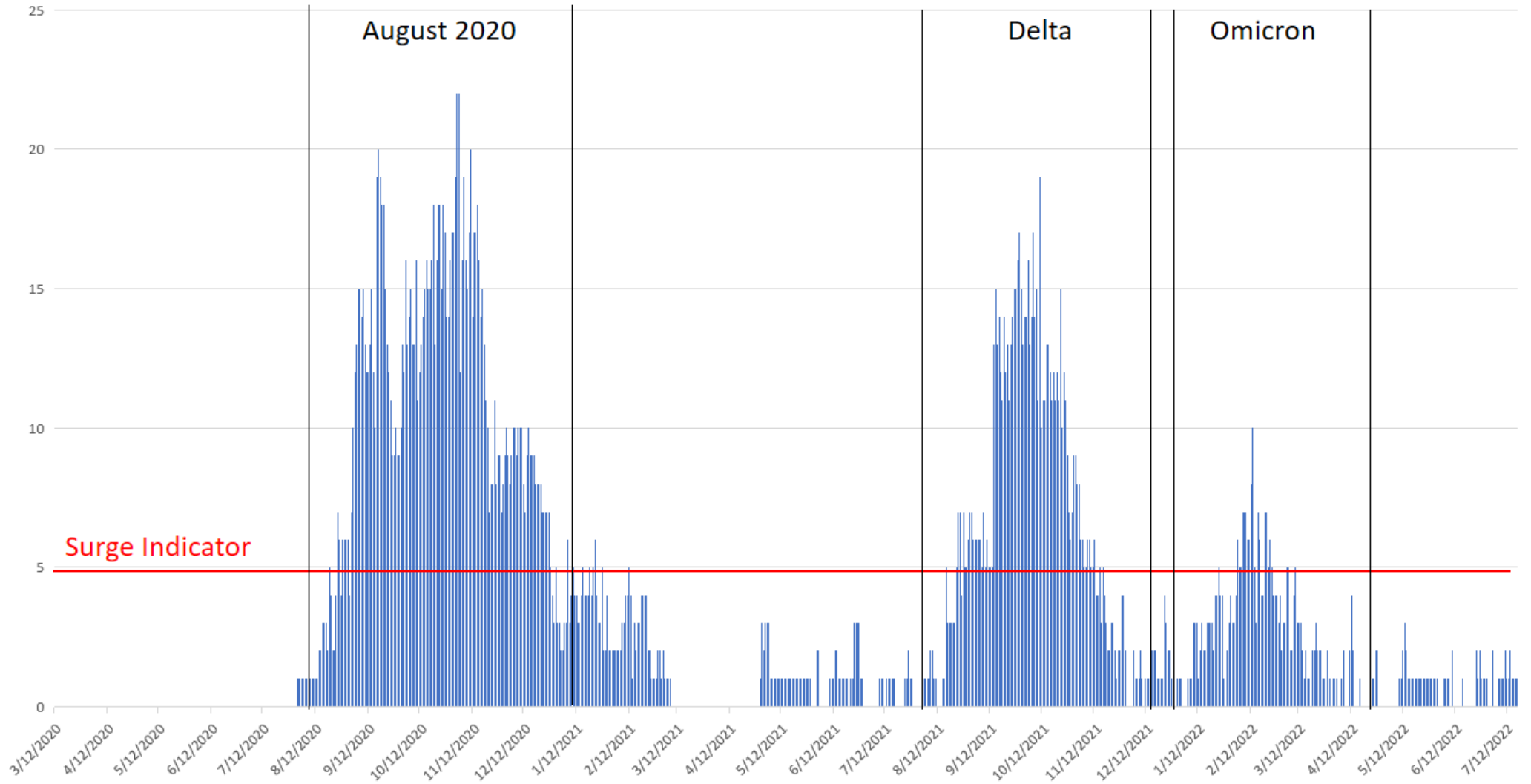


COVID-19 PANDEMIC SURGE INDICATORS:

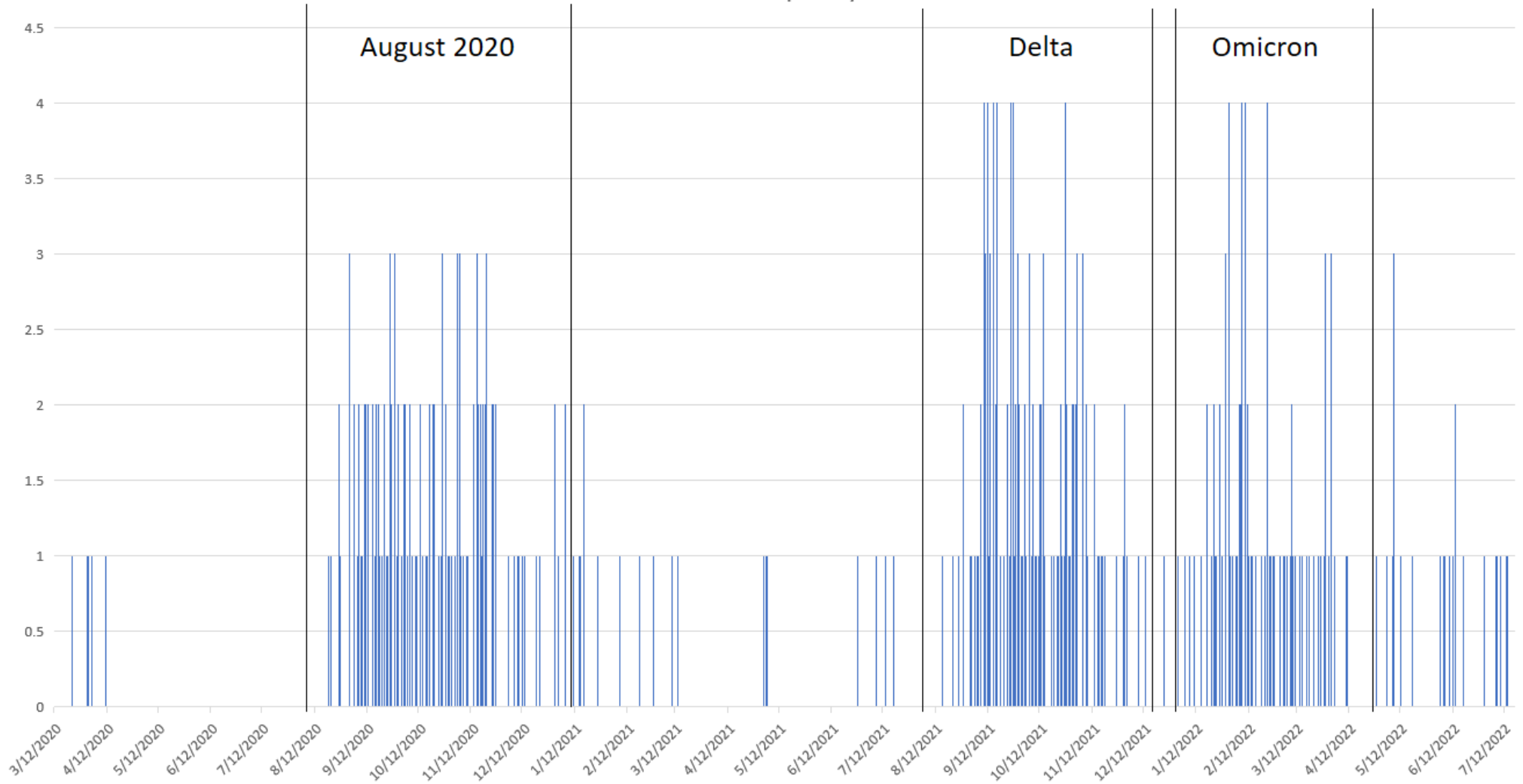




Island.Wide.ICU.COVID



Death Count per day



Data on cases compiled by Vince Campo, CDC Foundation Surveillance Unit lead analyst
For more information, contact the Territorial Epidemiologist: ann.pobutsky@dphss.guam.gov or (671) 888-9276 (WARN).