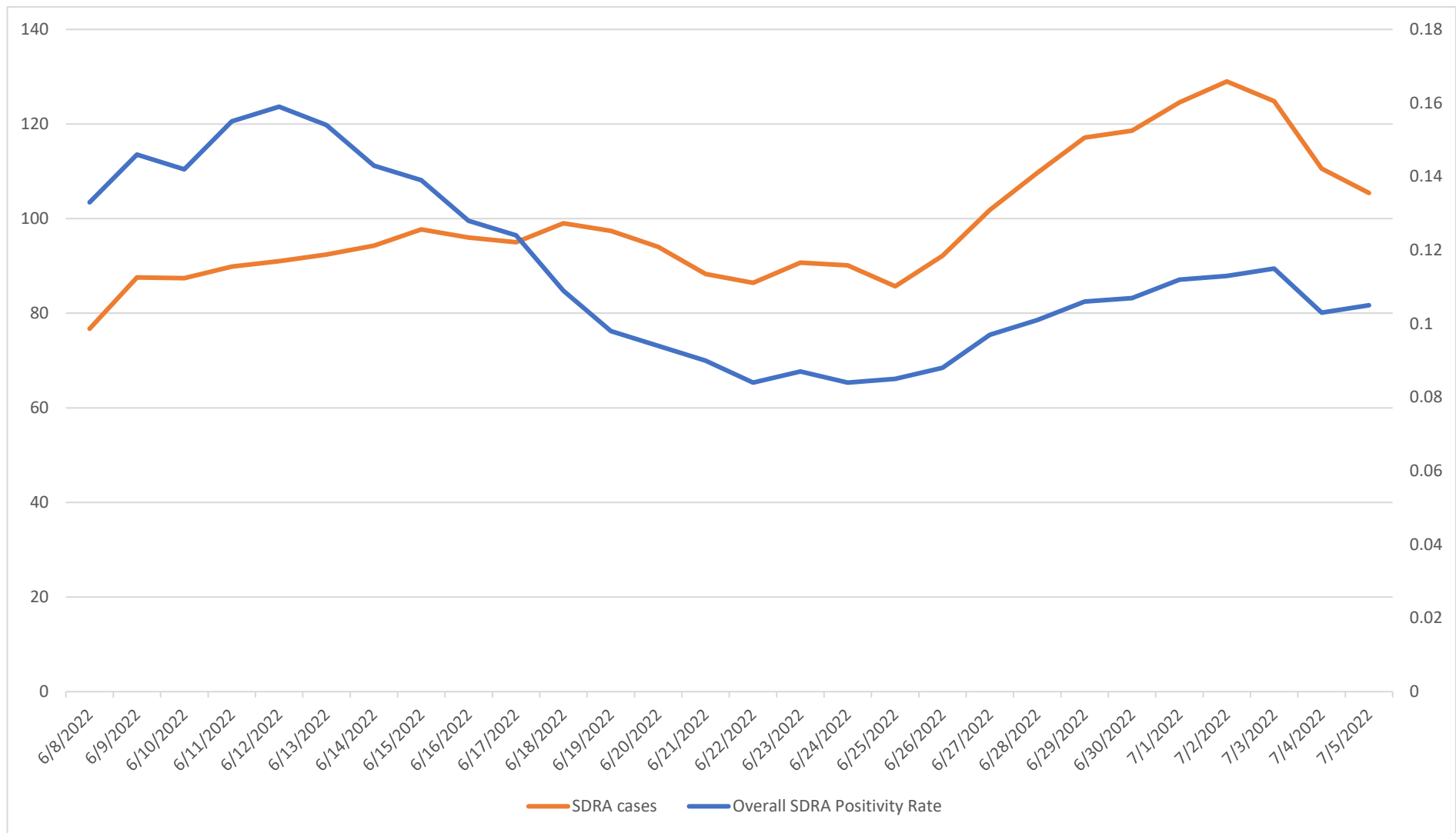




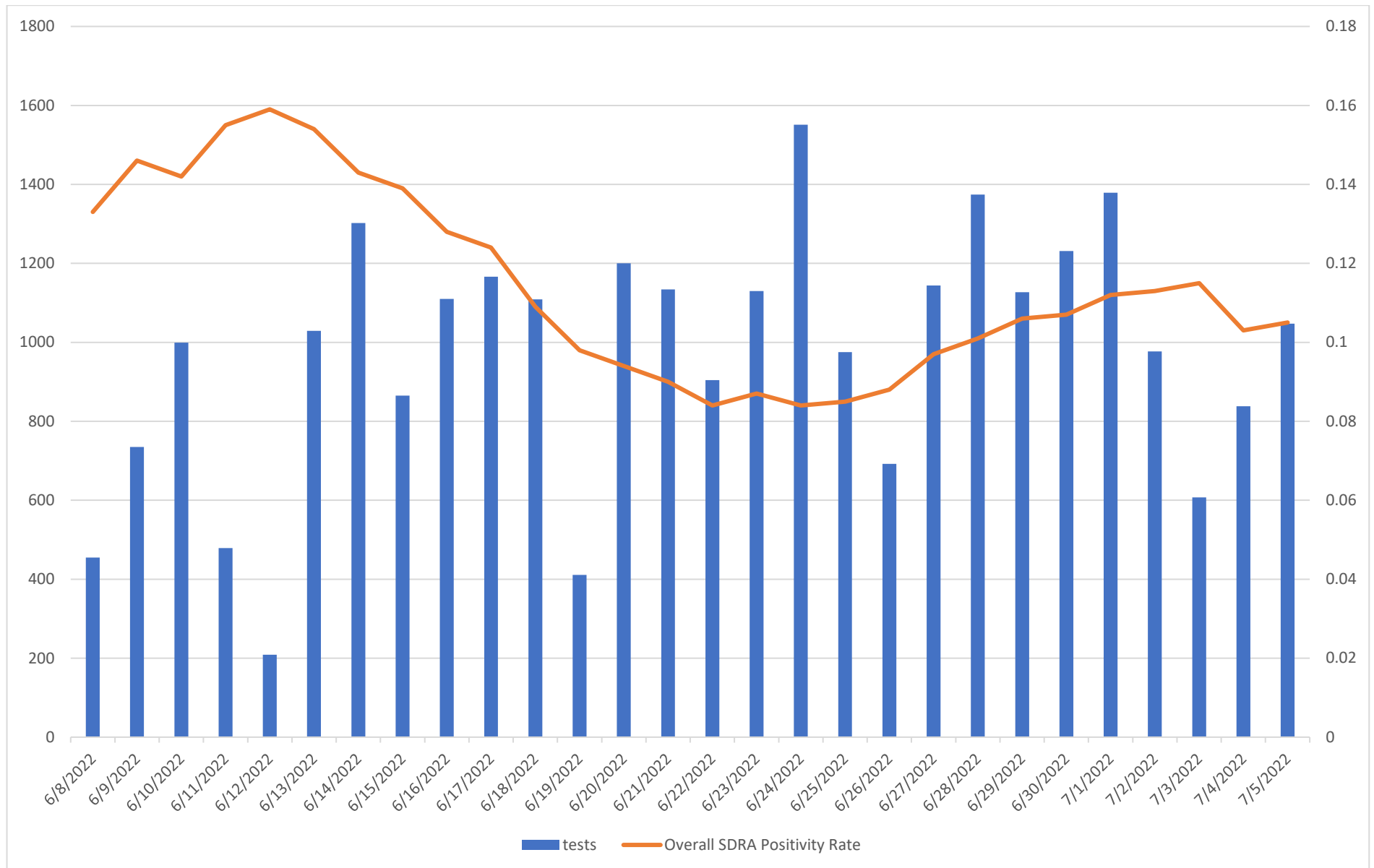
COVID-19 DATA/SURVEILLANCE UPDATE: June 8-July 5, 2022

**OFFICE OF EPIDEMIOLOGY AND RESEARCH & COVID-19 SURVEILLANCE UNIT
GUAM DEPARTMENT OF PUBLIC HEALTH AND SOCIAL SERVICES**

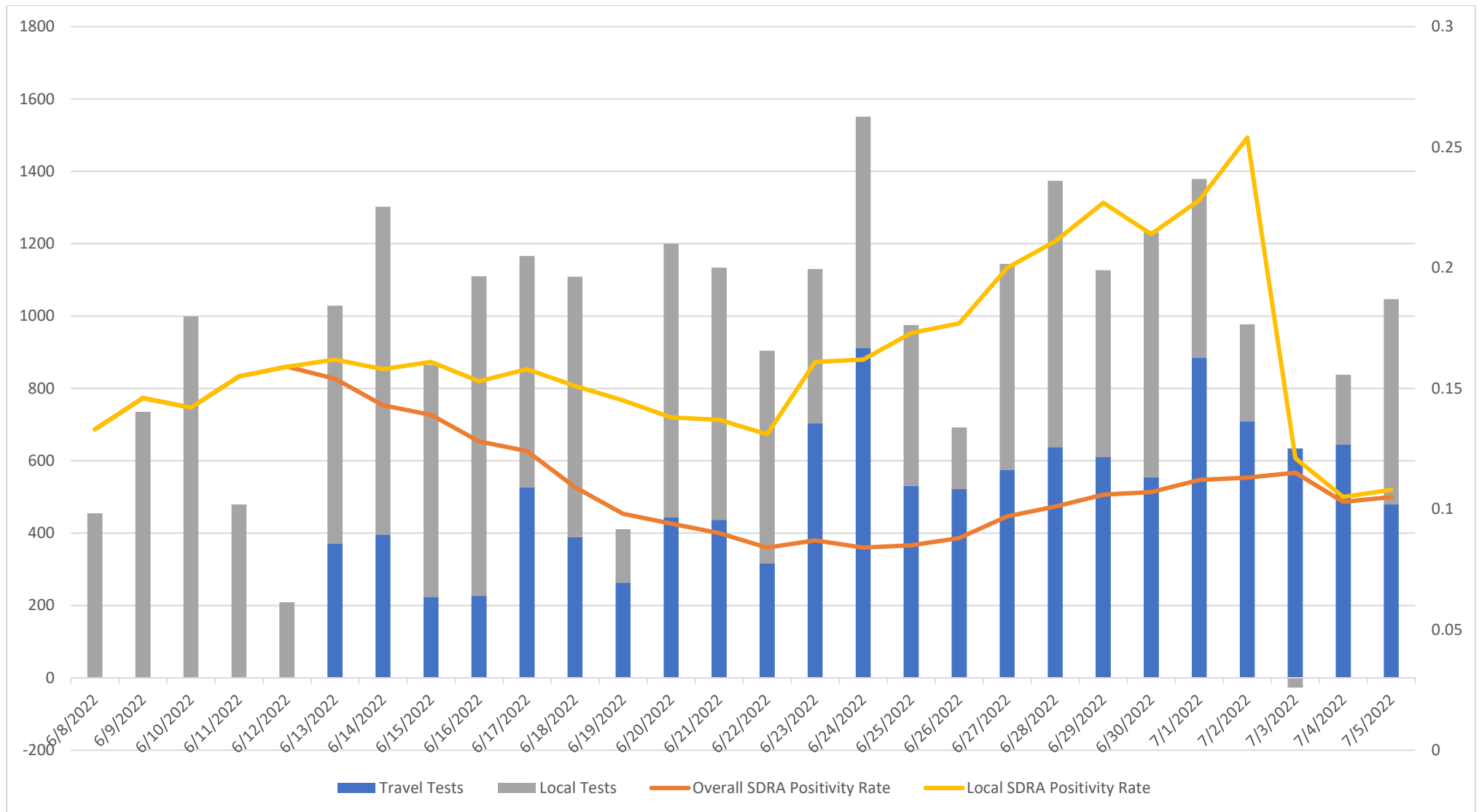
7/7/2022



The SDR of cases for the past month is over 100 cases per day. SDR positivity rate is just over 10%.

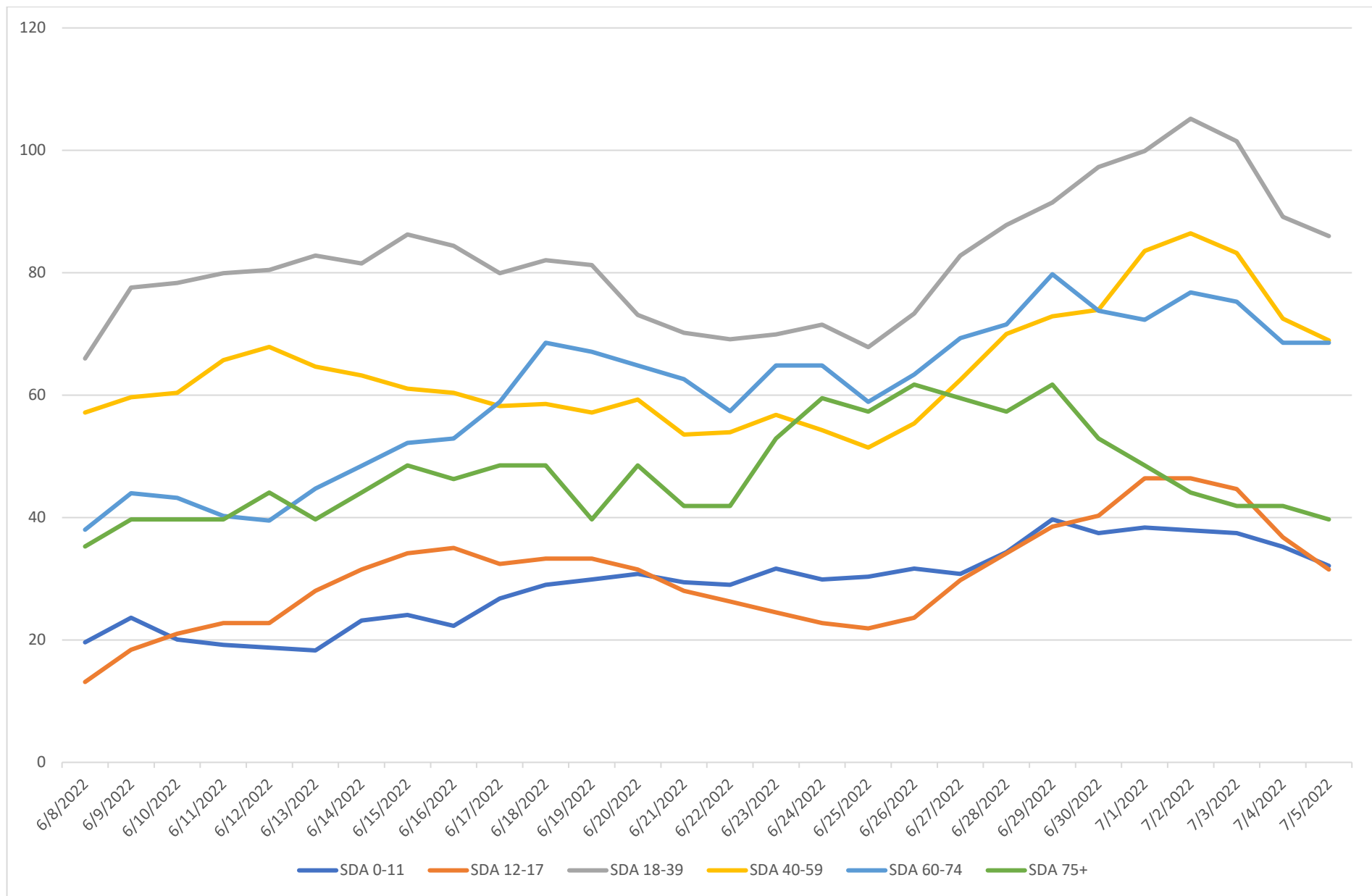


Testing is steady and the overall SDRA positivity rate is just over 10%.

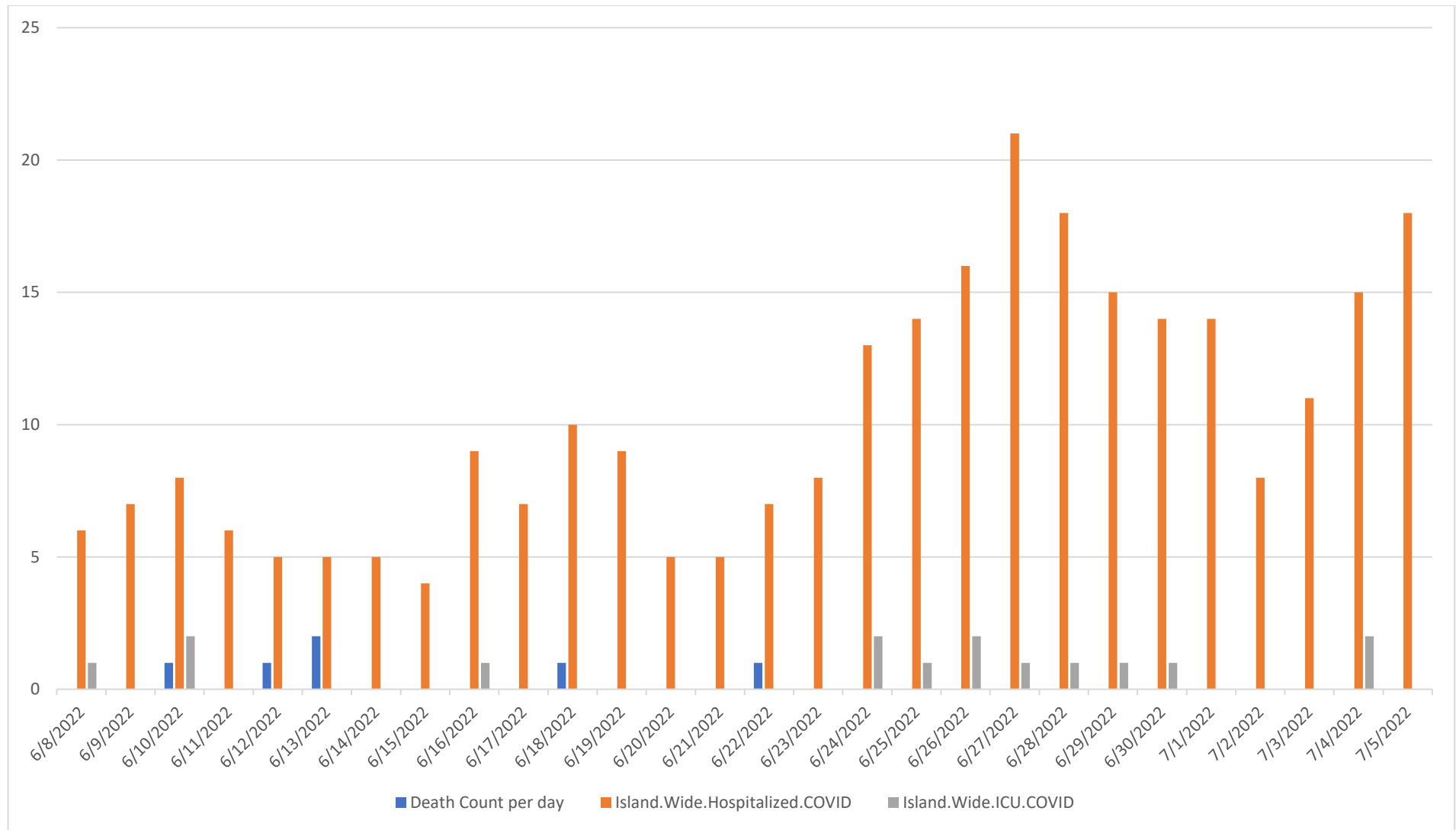


Note travelers testing began on Jun 13, 2022 and this can be observed in the increase in tests in blue with “local tests” in grey.

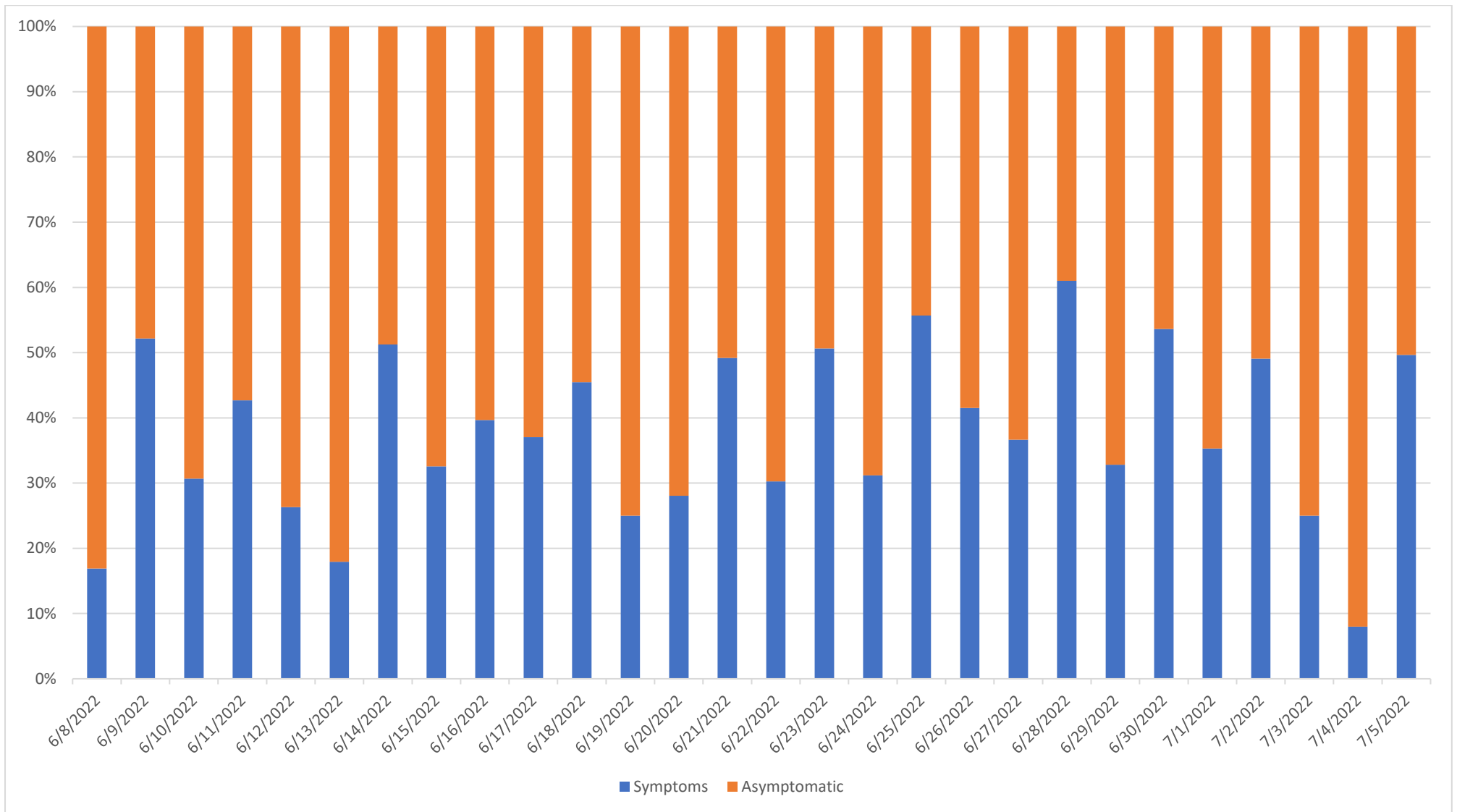
It is important to point out that local residents are also going to travelers testing sites, so the true local community positivity rate cannot be differentiated by “residents” versus “non-residents”, regardless of travel status.



The largest proportion of positives remains among working age adults 18-64.



The island-wide, daily COVID-19 hospitalized count has increased, yet the ICU count shows no significant change and deaths continue to be sporadic.



Data on cases compiled by Vince Campo, CDC Foundation Surveillance Unit lead analyst

For more information, contact the Territorial Epidemiologist: ann.pobutsky@dphss.guam.gov or (671) 888-9276 (WARN).