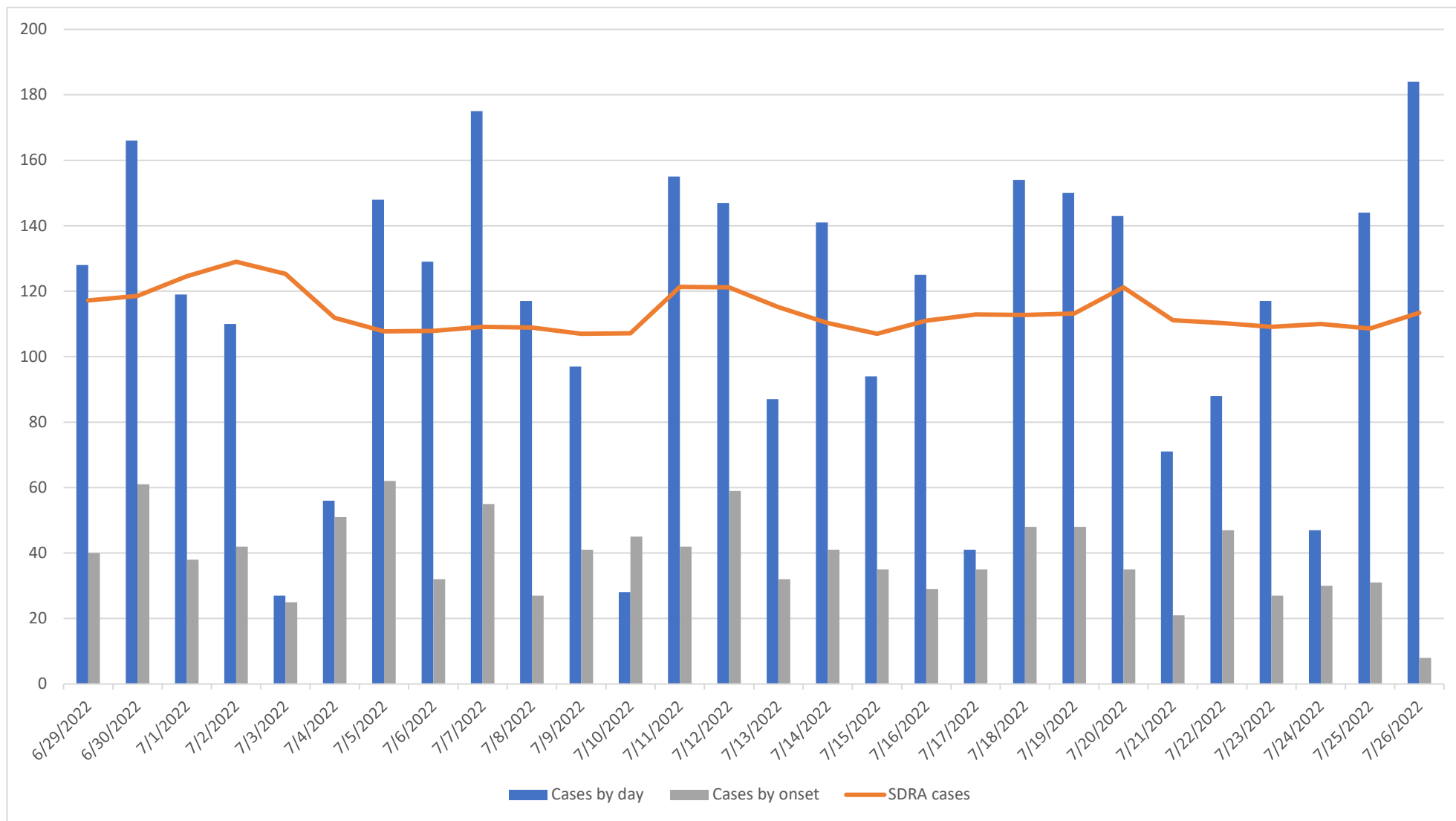




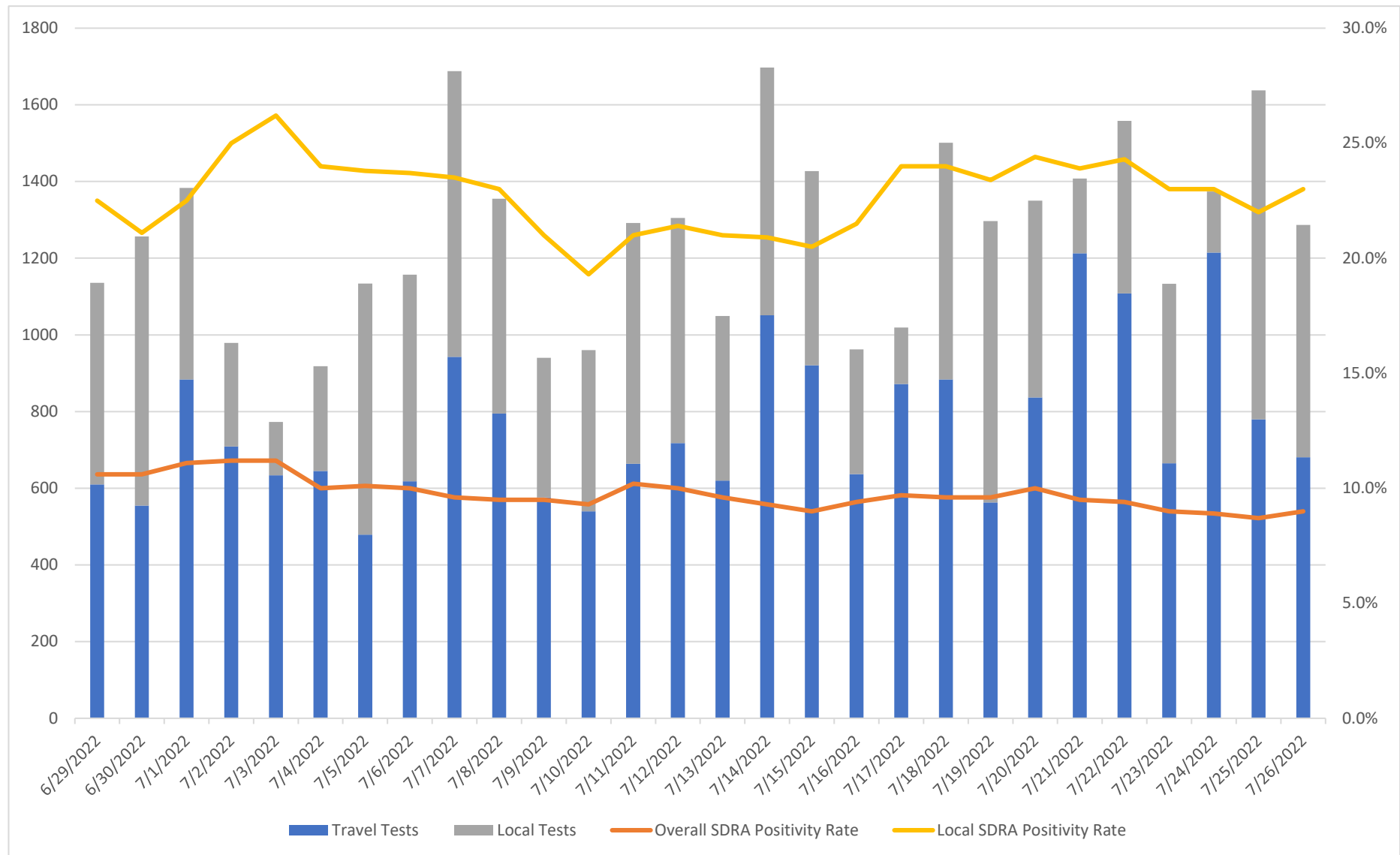
COVID-19 DATA/SURVEILLANCE UPDATE: June 29-July 26, 2022

**OFFICE OF EPIDEMIOLOGY AND RESEARCH & COVID-19 SURVEILLANCE UNIT
GUAM DEPARTMENT OF PUBLIC HEALTH AND SOCIAL SERVICES**

7/27/2022

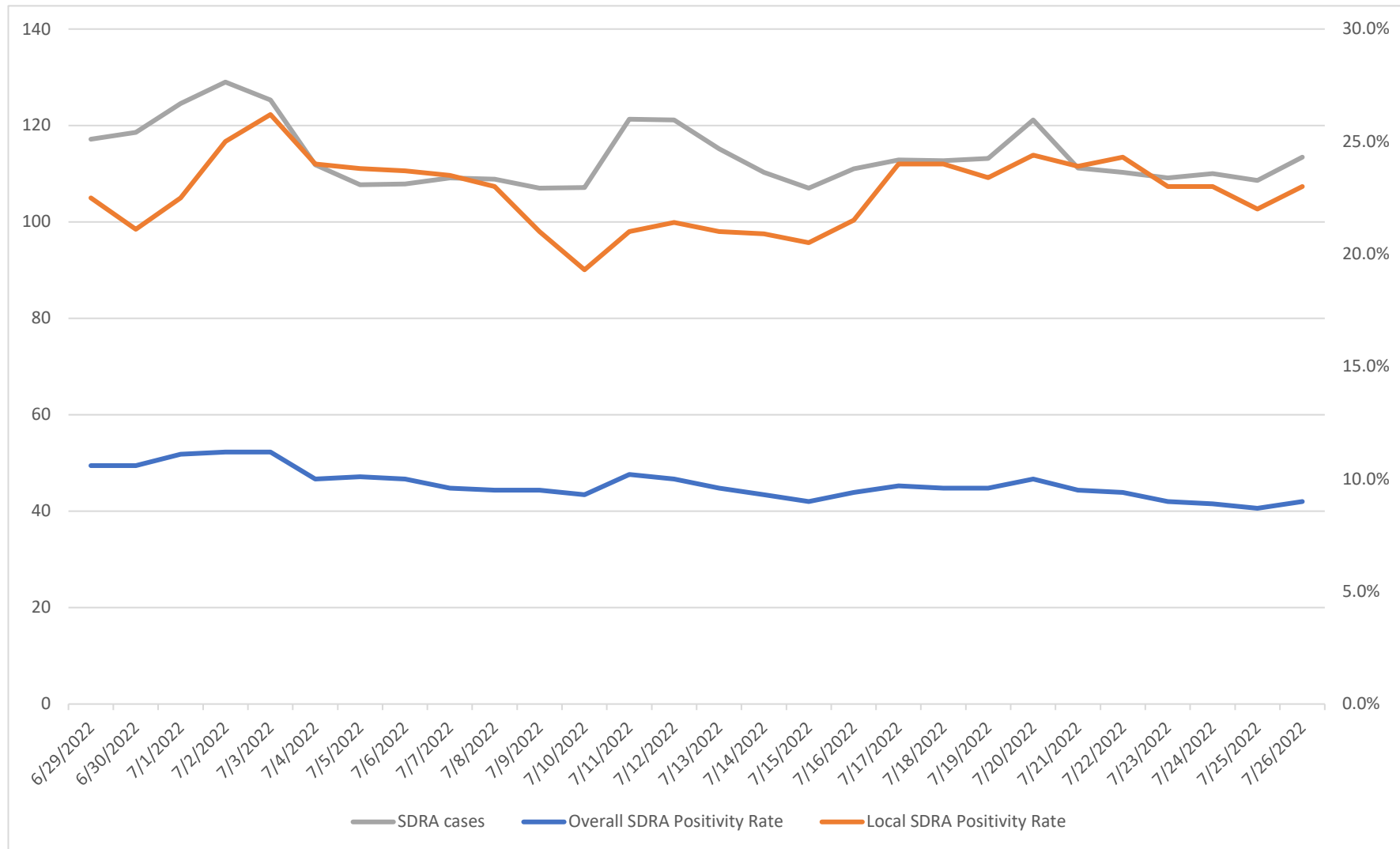


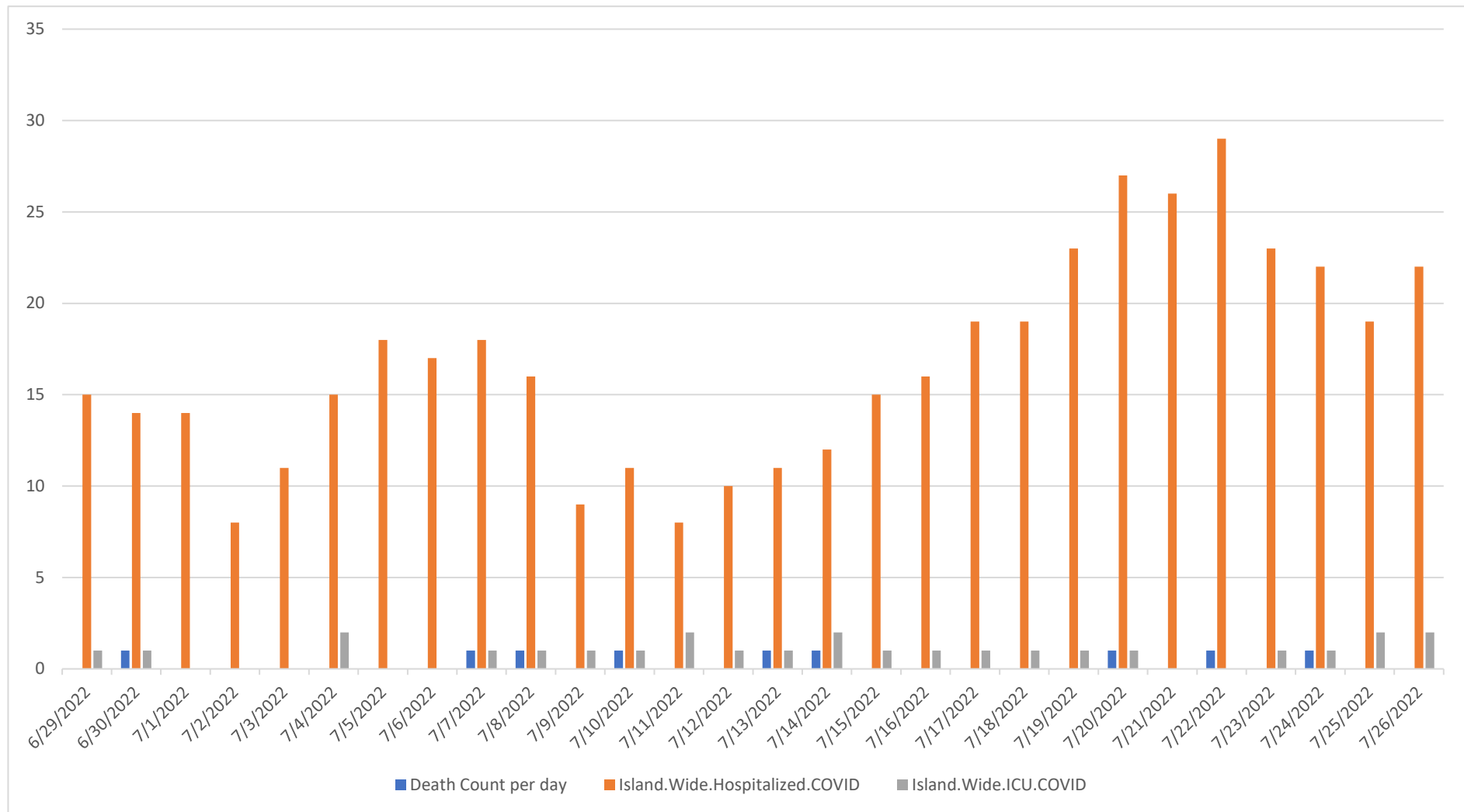
The SDRA of cases for the past 4 weeks, continues to be over 100 cases per day.



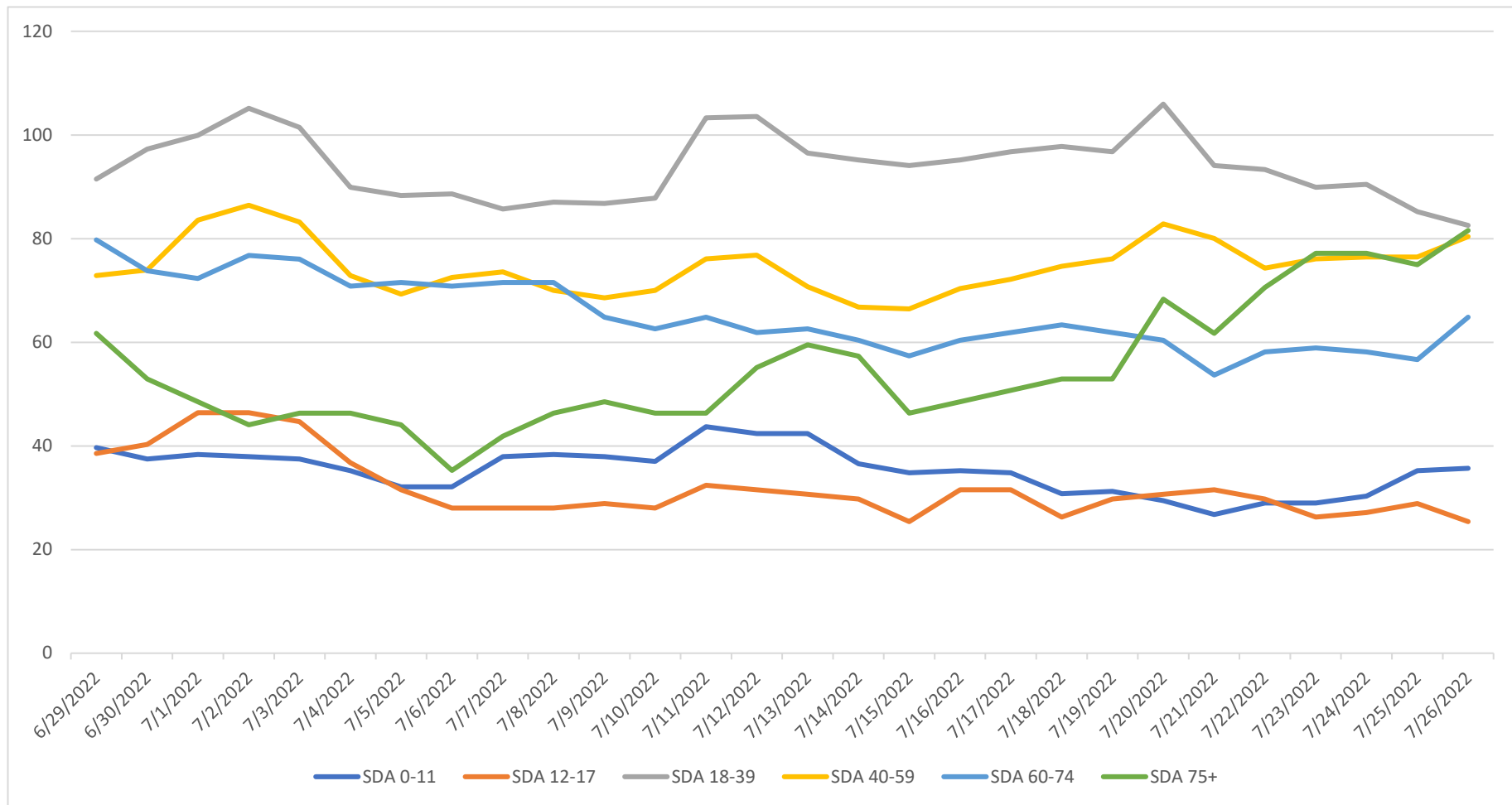
Note travelers tests in blue with “local tests” in grey.

The local positivity rate is much higher (25%) than the overall positivity rate (10%).

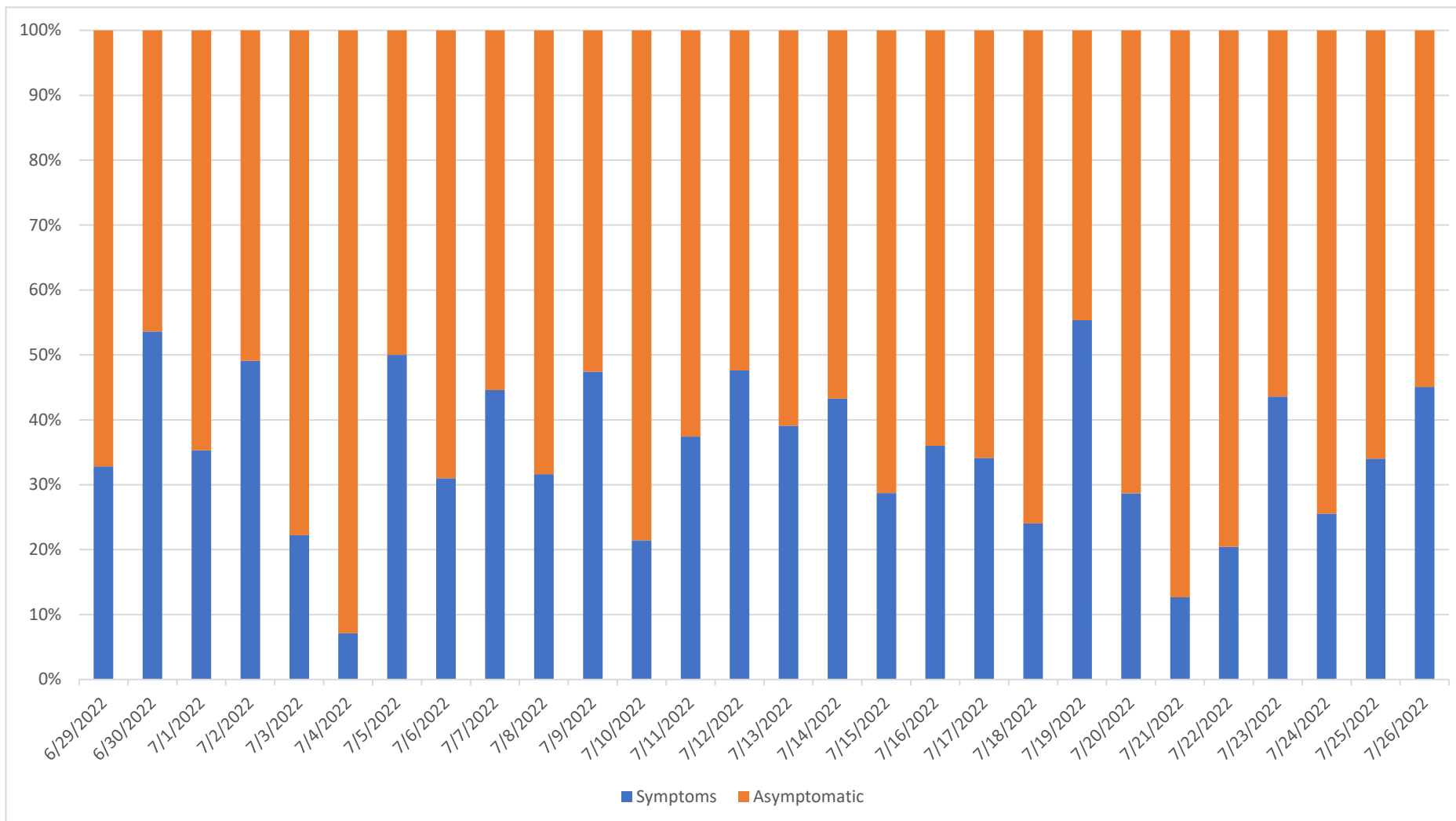




The island-wide, daily COVID-19 hospitalized count has recently increased, yet the ICU count shows no significant change and deaths continue to be sporadic.



**By age, the continued highest positivity rate is among the working age population 18-39 and 40-59.
There has also been a recent uptick in the over 75+ age group.**



Most cases continue to be asymptomatic.

Data on cases compiled by Vince Campo, CDC Foundation Surveillance Unit lead analyst
For more information, contact the Territorial Epidemiologist: ann.pobutsky@dphss.guam.gov or (671) 888-9276 (WARN).