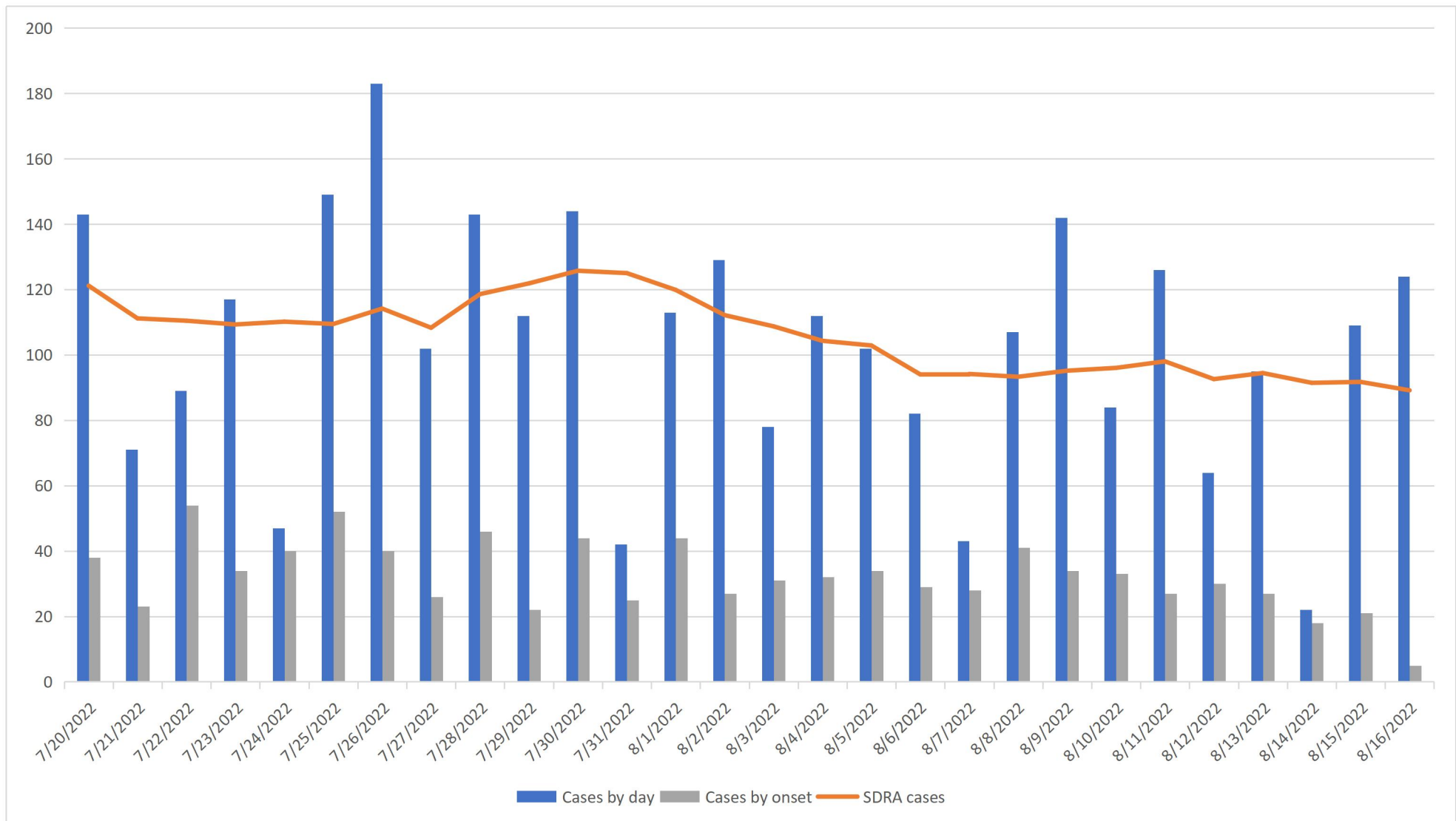




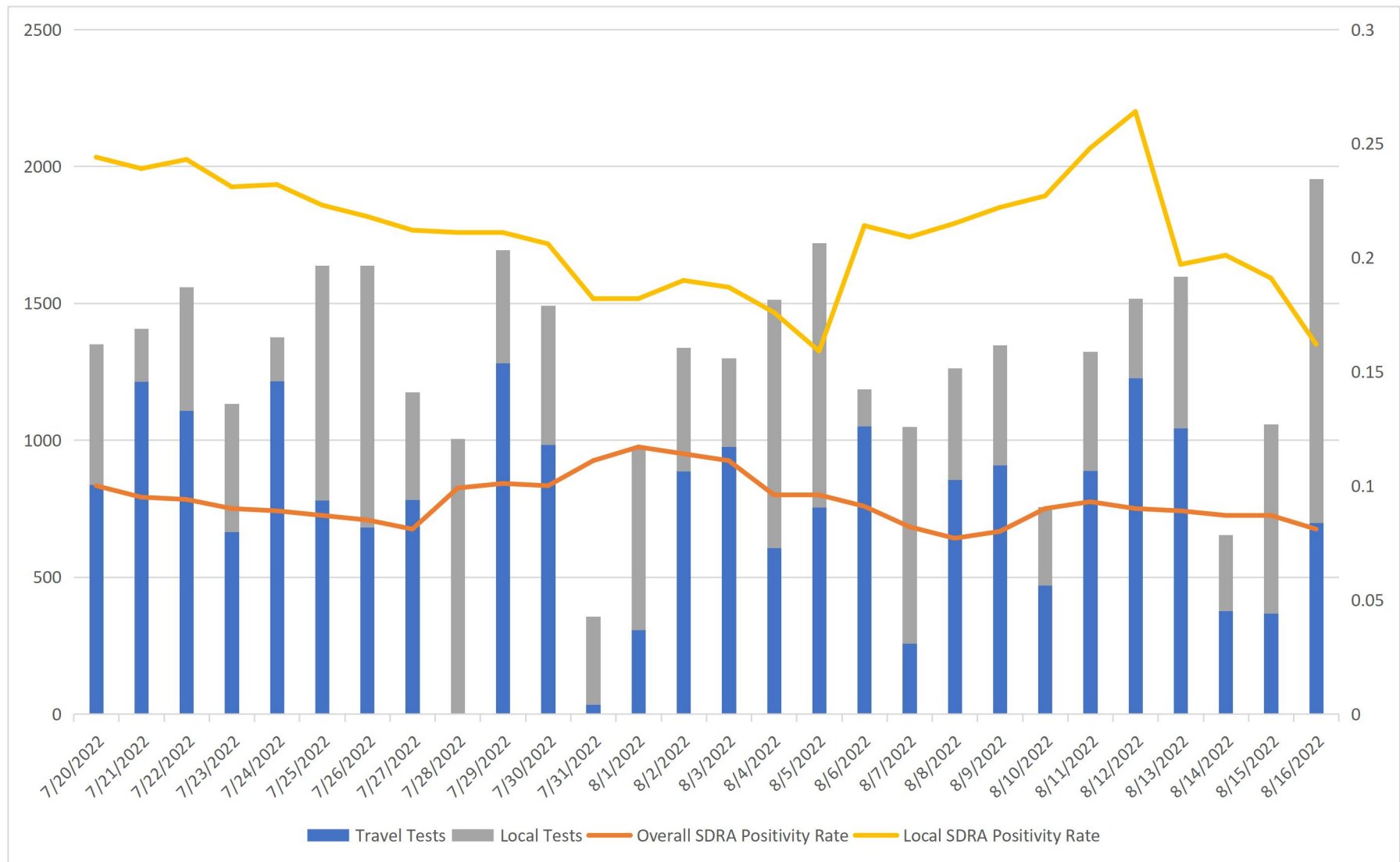
**COVID-19 DATA/SURVEILLANCE UPDATE: July 20-August 16, 2022**

**OFFICE OF EPIDEMIOLOGY AND RESEARCH & COVID-19 SURVEILLANCE UNIT  
GUAM DEPARTMENT OF PUBLIC HEALTH AND SOCIAL SERVICES**

**8/18/2022**

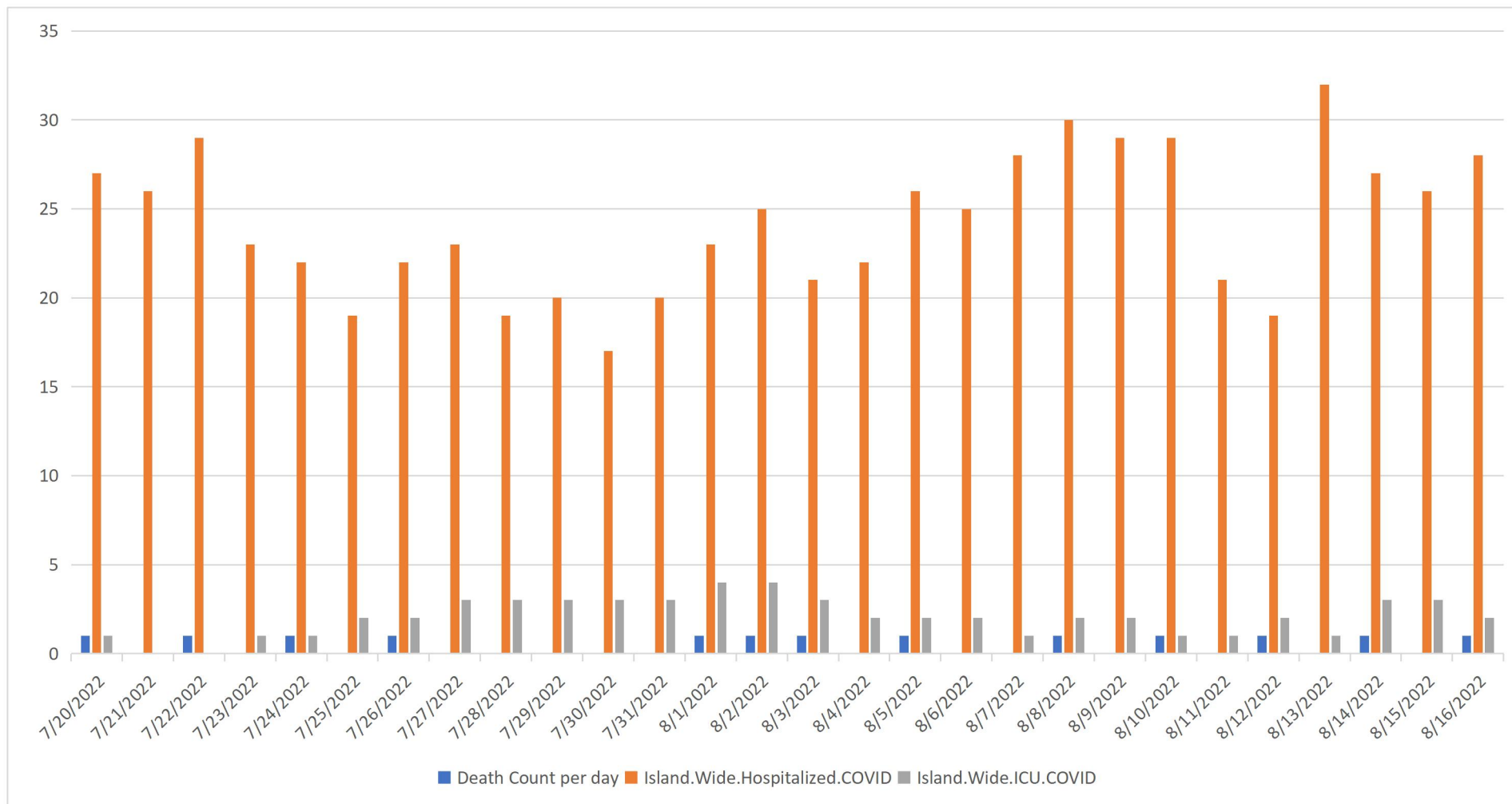


**The SDRA of cases has decreased and has been consistently less than 100 cases per day during the past two weeks.**

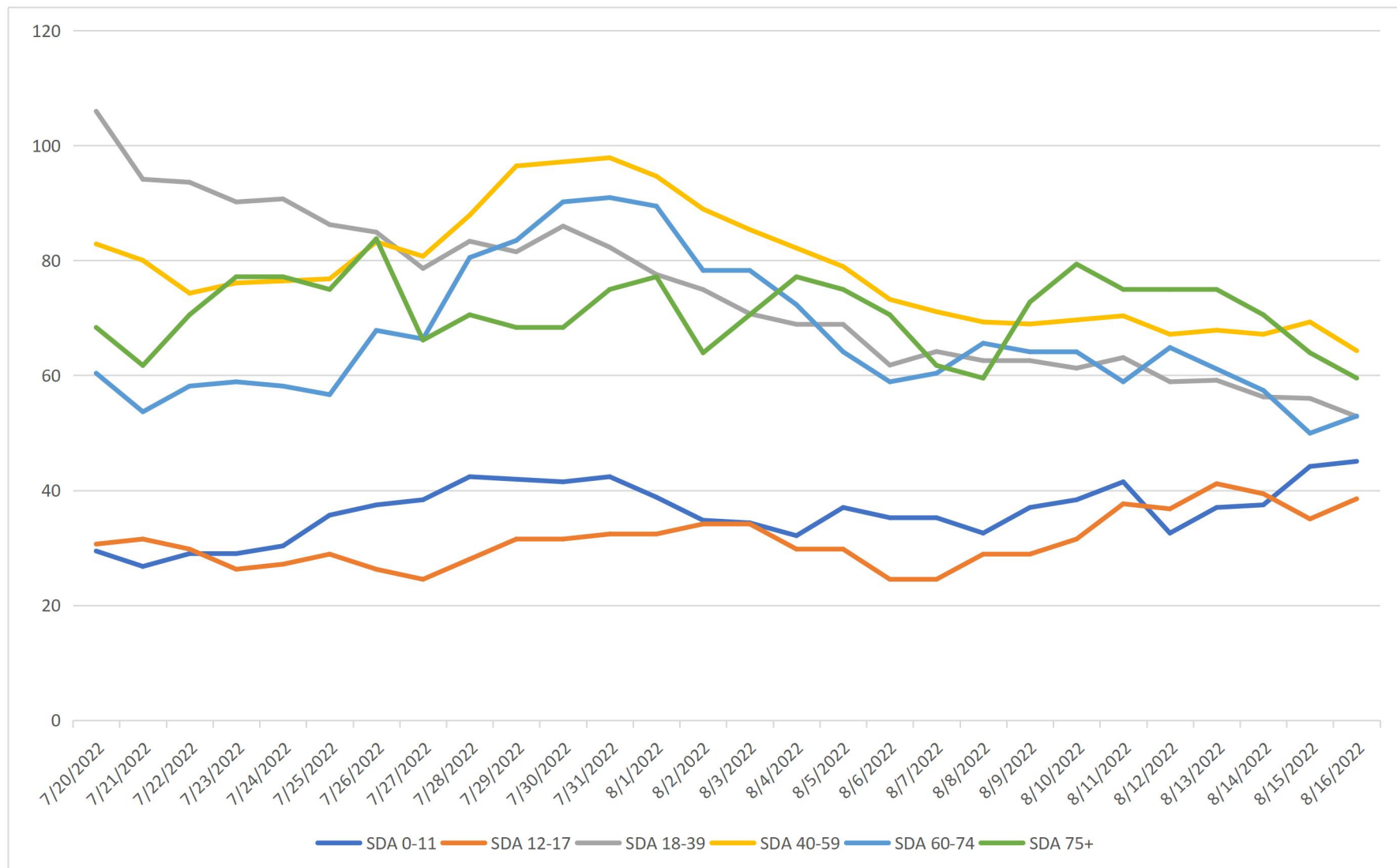


**Note travelers tests in blue with “local tests” in grey.**

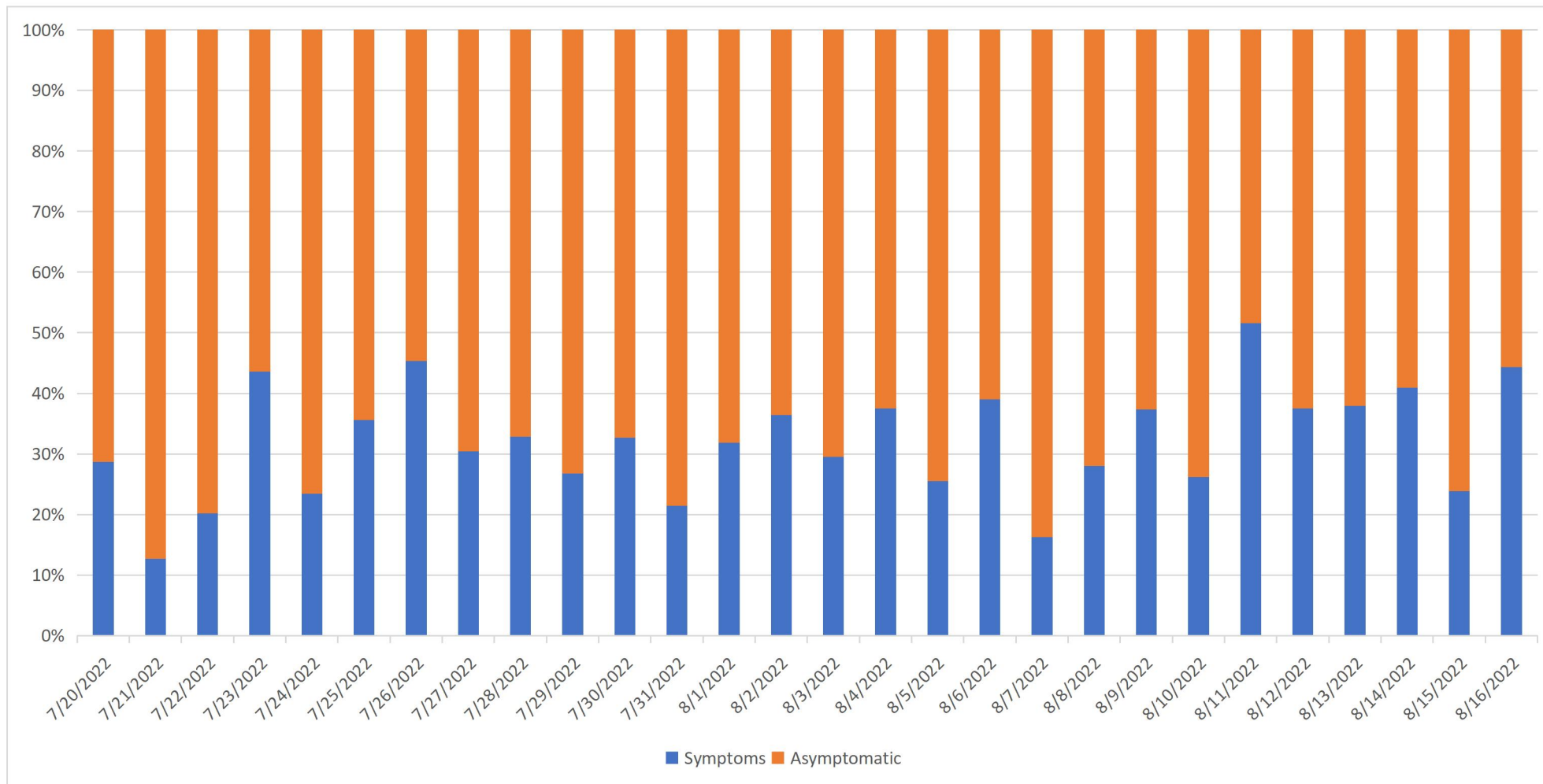
**The overall positivity rate (10%) continues to be lower than the local positivity rate (which has recently gone below 20%).**



**The island-wide, daily COVID-19 hospitalized count has remains above the surge indicator of 20 per day, and while the ICU count has not gone above the surge threshold of 5 per day. Deaths continue to be sporadic.**



**By age, all adult groups are decreasing and converging, but there is a recent uptick in children in the past week, likely due to the start of school.**



**Most cases continue to be asymptomatic.**

**Data on cases compiled by Hope Evangelista, MSci., Surveillance Unit lead analyst.  
For more information, contact the Territorial Epidemiologist: [ann.pobutsky@dphss.guam.gov](mailto:ann.pobutsky@dphss.guam.gov) or (671) 888-9276 (WARN).**